

ENERGY EFFICIENCY

in the sign & lighting industry

In the commercial sign and lighting industry, refitting traditional lighting sources to LEDs has become a top priority for business owners for their flexibility and long-term cost savings. LED lights offer varied options for size, customization and adaptability, and are damage and weather resistant, making them an excellent choice for exterior signage and lighting.

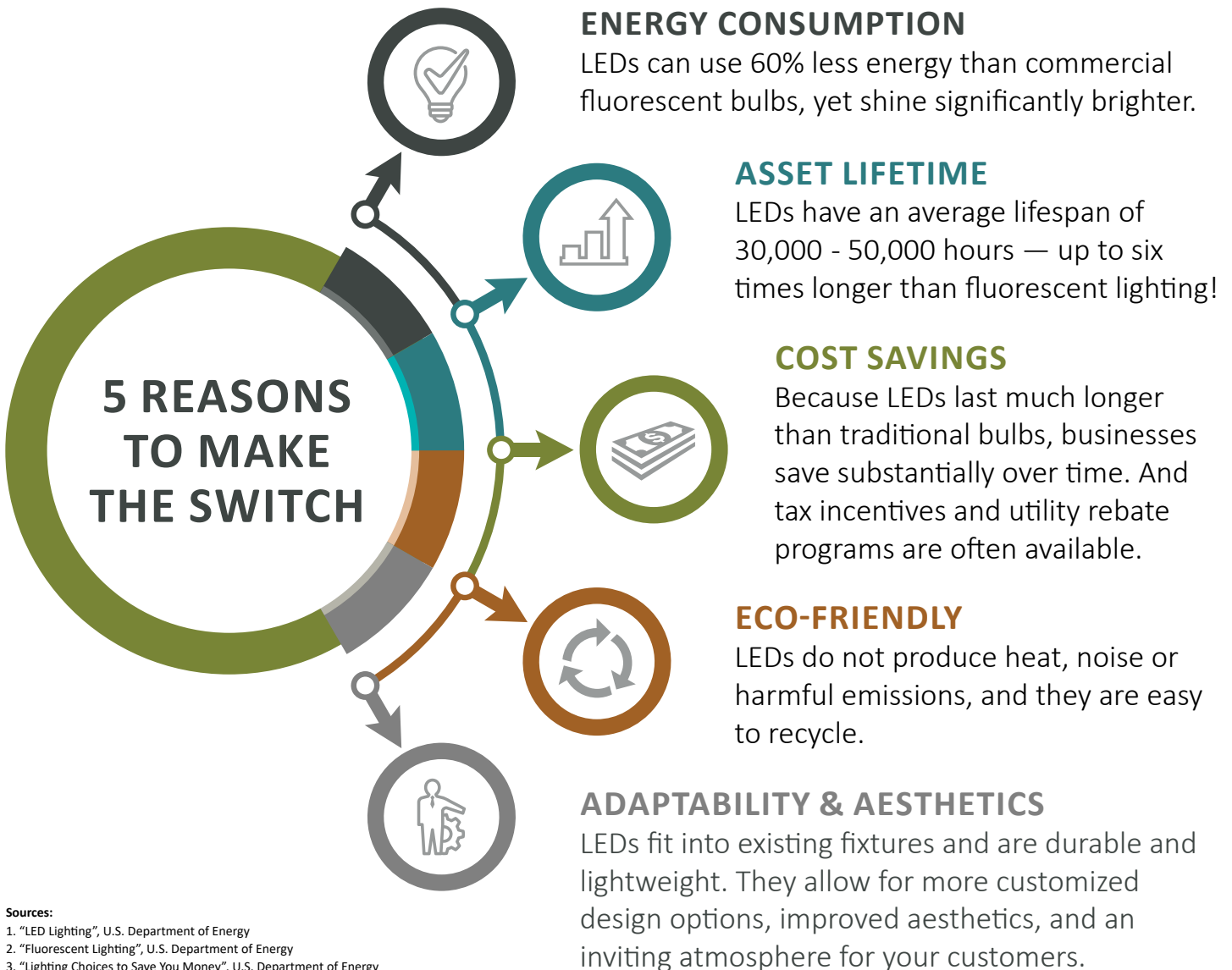
DID YOU KNOW?



Fluorescent: 34 Watt T12 Tube
8,000 hours expected lifetime
\$45 per year in energy costs ↑



LED: 16 Watt T8 Equivalent Tube
30,000 hours expected lifetime
\$17 per year in energy costs ↓



Sources:

1. "LED Lighting", U.S. Department of Energy
2. "Fluorescent Lighting", U.S. Department of Energy
3. "Lighting Choices to Save You Money", U.S. Department of Energy