



Wallbridge Intersects 12.70 g/t gold over 2.71 metres within Newly Discovered Broad Gold Mineralization 300 metres Southwest of the Fenelon Deposit

Toronto, Ontario – February 21, 2019 – Wallbridge Mining Company Limited (TSX:WM, FWB: WC7) (“Wallbridge” or the “Company”) is pleased to announce continued positive drill results that have extended a known gold zone and have identified an entirely new gold zone with many similarities to the main deposit at its 100%-owned Fenelon Gold Property (“Fenelon” or the “Property”).

Highlights

- Since the last press release (see [Wallbridge Press Release dated January 15, 2019](#)), highlights of received assay results from the surface exploration drill program are as follows:
 - FA-18-051: **1.02 g/t gold over 24.59 metres**, including **3.13 g/t gold over 4.78 metres** which includes an interval containing visible gold that assayed **9.90 g/t gold over 0.54 metres**, and
12.70 g/t gold over 2.71 metres included within a wider interval of **3.93 g/t gold over 9.96 metres**
both hosted within an approximately 200 m wide so far unknown package of favorable mafic-ultramafic host rocks with broad low-grade gold mineralization throughout.
 - FA-18-040: **19.18 g/t gold over 0.58 metres** in the Cayenne zone, extending this zone approximately 100 metres to the Northwest, and
3.08 g/t gold over 3.27 metres in a new zone at depth in the Tabasco South area
- The 2019 drill program has now commenced with one underground drill rig and one surface drill rig to follow at the end of the month. The first two drill holes of the underground resource drill program (19-5150-003 and 19-5150-001) have intersected visible gold.
- Assay results from seven underground drill holes and ten surface drill holes are pending.

“These results are significant as they continue to show the considerable potential that exists to increase gold mineralization beyond the known zones at Fenelon along the four-kilometer strike length of the gold-bearing corridor,” said Marz Kord, President and CEO. “The new zone intersected in hole FA-18-051 is located several hundred metres away from the main deposit and has very similar characteristics to the existing deposit.”

“The discovery of this broad gold mineralized system in a so far unknown gabbroic intrusion at depth in hole FA-18-051 is very exciting. This new mineralized system is made up of a stockwork of gold-bearing veins surrounding more focused higher-grade shear zones which are similar to the ones found in the main deposit,” stated Attila Péntek, Vice-President, Exploration of Wallbridge. “This discovery lines up well

with a strong break in the airborne magnetic signatures, indicating a significant northwest-southeast trending structure, as can be seen in Figure 3 of this release. This structure also appears to control other, so far isolated, historic gold intersections and represents an entirely new exploration target for our 2019 drill program”

The 2018 underground and surface drill programs were completed before the holidays and drill rigs were de-mobilized. Assay results of several drill holes are still pending and will be reported as they are received in the next few weeks.

The 2019 drill program (50,000-75,000 m planned) has commenced last week with one underground drill rig and with one surface drill rig to follow at the end of the month. The 2019 underground resource drilling will initially be carried out from the recently established 5130 level (~125 m depth) and will target the main high-grade shoots down-plunge to 200 m depth.

The development of an exploration drift is currently underway and will be completed by the end of February. This drift will facilitate resource drilling to greater depth and along strike, including the Tabasco and Cayenne mineralized corridors, as well as the new deep mineralized system discovered in FA-18-051.

The 2019 surface exploration drill program will follow known mineralized zones to 300-400 m depth and test targets further away from the mine workings.

An Orevision surface IP survey to test 600 m strike length of the gold-hosting mineralized environment northwest of the main deposit was completed by Abitibi Geophysics Inc. in February. Results of this study will be incorporated with existing geophysical data into a coherent 3D mode, which will be used to guide geologic modeling and drill targeting.

A summary of the new drill hole results from the ongoing 2018/2019 underground and surface drill programs are reported in Tables 1 and 2 and also shown on the [Figures](#) below as well as on the [Company website](#).

Table 1. Wallbridge Fenelon Gold Property 2018/2019 Drill Assay Highlights ⁽¹⁾

Drill Hole	From	To	From	To	Core Length	True Width	Au	Au Capped ⁽²⁾	VG ⁽³⁾	Zone	Drill Program
	(m)	(m)	(m)	(m)	(m)	(m)	(g/t)	(g/t)			
FA-18-040	276.00	276.58			0.58	NA ⁽⁴⁾	19.18	19.18		Cayenne	Surface Exploration
FA-18-040	531.00	534.27			3.27	NA	3.08	3.08		New Zone	Surface Exploration
FA-18-041	93.60	95.00			1.40	NA	1.83	1.83		New Zone	Surface Exploration
FA-18-042	194.05	195.00			0.95	NA	1.37	1.37		New Zone	Surface Exploration
FA-18-051	501.46	526.05			24.59	NA	1.02	1.02	VG	New Zone	Surface Exploration
	Including...		501.46	506.24	4.78	NA	3.13	3.13	VG	New Zone	Surface Exploration
	Which includes...		501.46	502.00	0.54	NA	9.90	9.90	VG	New Zone	Surface Exploration
FA-18-051	543.00	552.96			9.96	NA	3.93	3.93		New Zone	Surface Exploration
	Including...		550.25	552.96	2.71	NA	12.70	12.70		New Zone	Surface Exploration
FA-18-051	610.75	611.83			1.08	NA	1.73	1.73		New Zone	Surface Exploration
FA-18-051	624.64	625.75			1.11	NA	1.27	1.27		New Zone	Surface Exploration
18-5175-008	89.35	94.95			5.60	3.06	1.26	1.26		Naga Viper	U/G Resource
18-5175-010	64.03	65.55			1.52	0.97	1.93	1.93		Chipotle	U/G Resource
18-5175-010	81.59	83.92			2.33	1.49	3.28	3.28		Naga Viper	U/G Resource

(1) Table includes only highlight assay results since the latest press release. Earlier highlight intersections of the 2018 program can be found on the Company website: <http://www.wallbridgeminig.com/i/maps/fenelon/Fenelon-2018-UG-drilling-highlights.pdf>

(2) Au capped at 140 g/t following InnovExplo's 2016 Mineral Resource Estimate.

(3) Intervals containing visible gold ("VG").

(4) Currently not enough information available to estimate true width.

Table 2. Wallbridge Fenelon Gold Property 2018/2019 drill hole information ⁽¹⁾

Drill Hole ID	Local grid E	Local grid N	Elevation	Length (Metres)	Azimuth	Dip	VG/CP ⁽²⁾	Note
FA-18-040	10459	11054	5261	528	246	-48	CP	Further assays pending
FA-18-041	10752	10825	5262	201	32	-62	CP	Further assays pending
FA-18-042	10752	10825	5262	243	10	-72	CP	Assays pending
FA-18-044	10750	11130	5260	651	195	-51	CP	Assays pending
FA-18-046	10242	10807	5257	225	25	-57		Assays pending
FA-18-047	10634	11123	5260	620	210	-60	CP	Further assays pending
FA-18-048	10242	10807	5257	372	17	-70		Further assays pending
FA-18-049	10242	10807	5257	185	39	-51		Assays pending
FA-18-050	10242	10783	5257	400	358	-70	CP	Assays pending
FA-18-051	10432	11040	5260	670	220	-51	VG	Further assays pending
18-5175-006	10580	10986	5177	147	212	-37	VG	Assays pending
18-5175-007	10580	10986	5177	205	228	-43	CP	Assays pending
18-5175-011	10580	10986	5177	200	191	-48	CP	Assays pending
18-5175-021	10580	10986	5177	132	242	-19	VG	Further Assays pending
18-5175-012	10580	10986	5177	243	204	-55	CP	Assays pending
18-5175-013	10580	10986	5177	102	178	-51	CP	Assays pending
19-5150-003	10595	10950	5147	102	205	-32	VG	Assays pending
19-5150-001	10595	10950	5147	<i>ongoing</i>	230	-62	VG	Assays pending

(1) Table includes only drill holes for which assays are pending. For earlier holes please refer to tables in previous press releases.

(2) Drill holes containing visible gold ("VG") or chalcopryite-bearing mineralized shear zone ("CP").

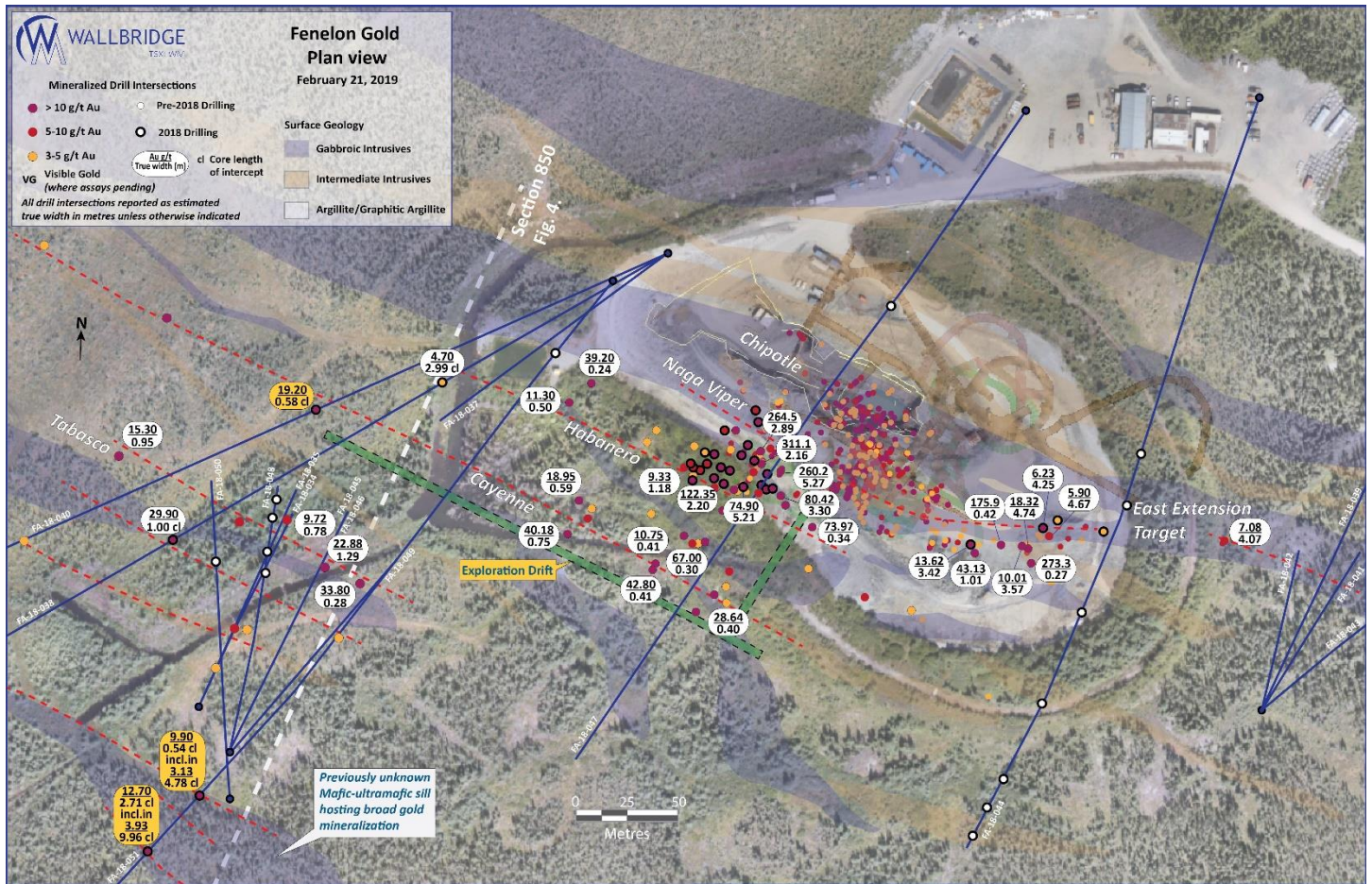


Figure 1: Fenelon Gold, Plan view

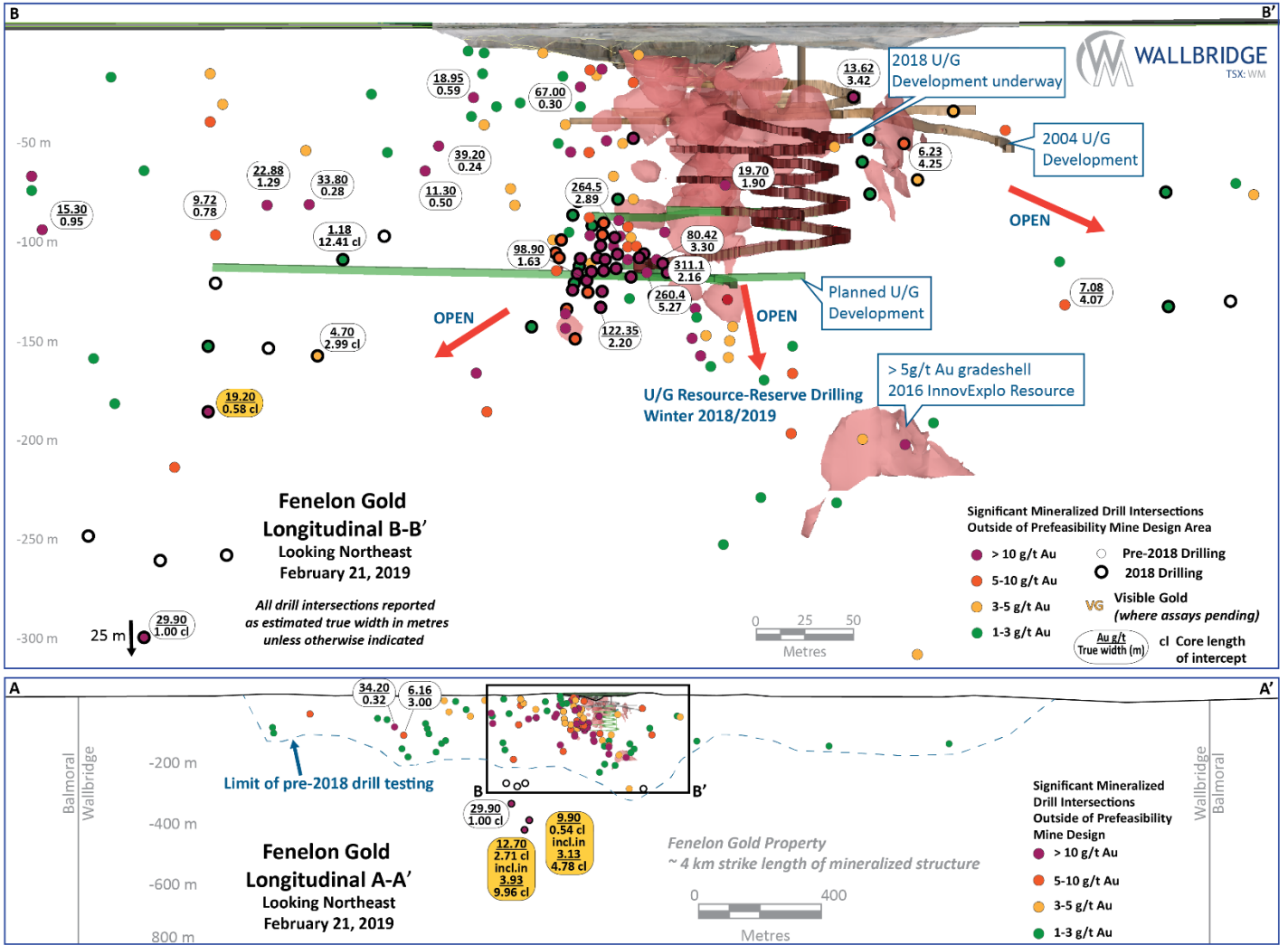


Figure 2: Fenelon Gold, Longitudinal

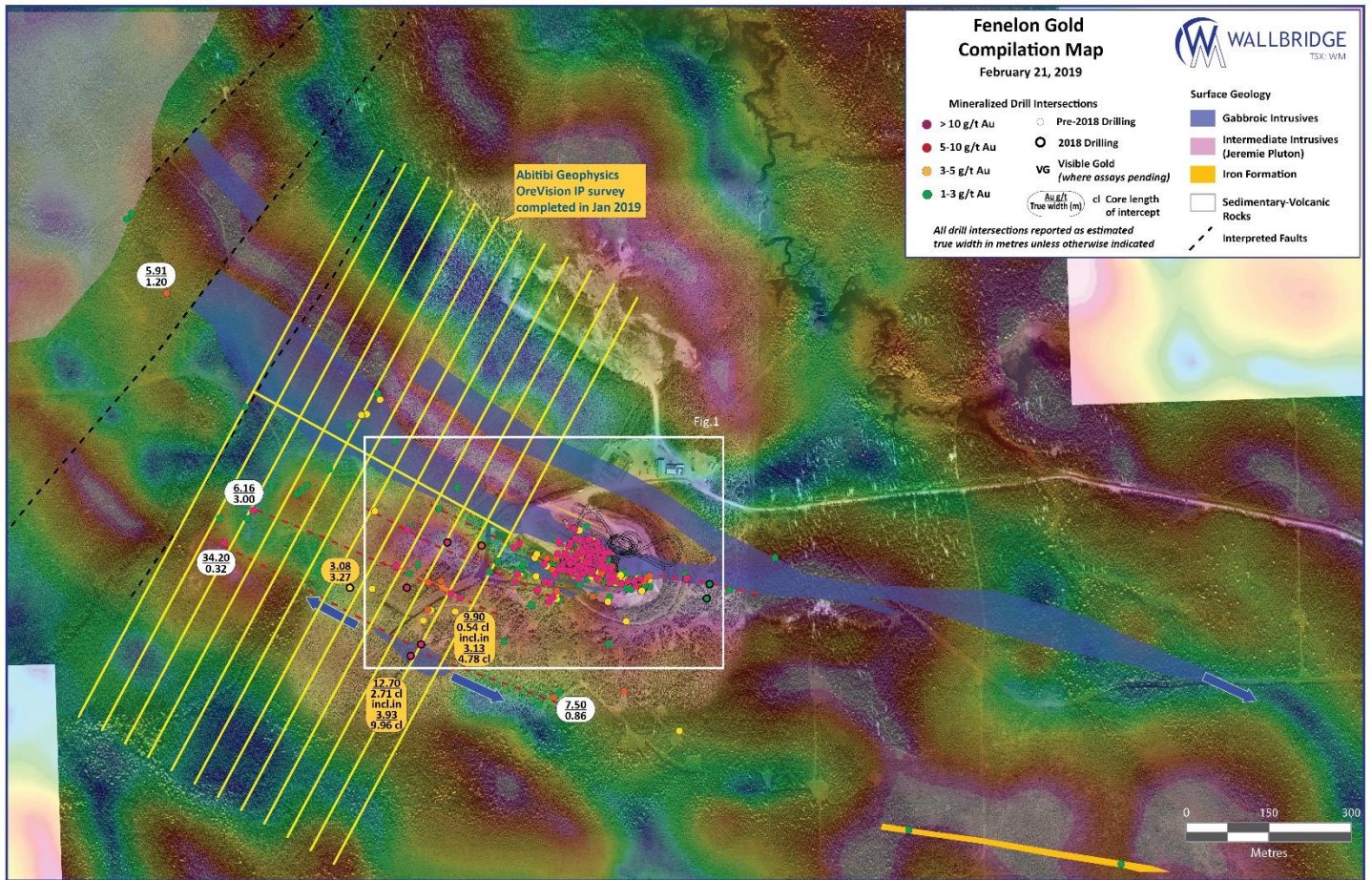


Figure 3: Fenelon Gold, Compilation map

About Wallbridge Mining

Wallbridge is establishing a pipeline of projects that will support sustainable production and revenue as well as organic growth through exploration and scalability.

Wallbridge is currently developing its 100%-owned high-grade Fenelon Gold property in Quebec with ongoing exploration and a 35,000 tonne bulk sample. Wallbridge is also pursuing other additional advanced-stage projects which would add to the Company's near-term project pipeline. These discussions benefit from the operating capabilities Wallbridge demonstrated by safely and efficiently mining the Broken Hammer deposit in Sudbury, which was completed in October 2015. As part of this strategy, the Company recently optioned the Beschefer Project, an advanced gold property with proven size and grade-potential near Fenelon Gold. Wallbridge is also continuing partner-funded exploration on its large portfolio of nickel, copper, and PGM projects in Sudbury, Ontario, with a focus on its high-grade Parkin project.

Wallbridge also has exposure to exploration for copper and gold in Jamaica and British Columbia through its 11.3% ownership of Carube Copper Corp. (CUC:TSX-V, formerly Miocene Resources Limited, a Wallbridge spin-out of its BC assets).

For Further Information

Please visit the Company's website at www.wallbridgeminig.com or contact:

Wallbridge Mining Company Limited

Marz Kord, P. Eng., M. Sc., MBA
President & CEO
Tel: (705) 682-9297 ext. 251
Email: mkord@wallbridgeminig.com

Brian W. Penny CPQ, CMA
Chief Financial Officer
Tel: (416) 716-8346
Email: bpenny@wallbridgeminig.com

This press release may contain forward-looking statements (including "forward-looking information" within the meaning of applicable Canadian securities legislation and "forward-looking statements" within the meaning of the US Private Securities Litigation Reform Act of 1995) relating to, among other things, the operations of Wallbridge and the environment in which it operates. Generally, forward-looking statements can be identified by the use of words such as "plans", "expects" or "does not expect", "is expected", "budget", "scheduled", "estimates", "forecasts", "intends", "anticipates" or "does not anticipate", or "believes", or variations of such words and phrases or statements that certain actions, events or results "may", "could", "would", "might" or "will be taken", "occur" or "be achieved". Wallbridge has relied on a number of assumptions and estimates in making such forward-looking statements, including, without limitation, the costs associated with the development and operation of its properties. Such assumptions and estimates are made in light of the trends and conditions that are considered to be relevant and reasonable based on information available and the circumstances existing at this time. A number of risk factors may cause actual results, level of activity, performance or outcomes of such exploration and/or mine development to be materially different from those expressed or implied by such forward-looking statements including, without limitation, whether such discoveries will result in commercially viable quantities of such mineralized materials, the possibility of changes to project parameters as plans continue to be refined, the ability to execute planned exploration and future drilling programs, the need for additional funding to continue exploration and development efforts, changes in general economic, market and business conditions, and those other risks set forth in Wallbridge's most recent annual information form under the heading "Risk Factors" and in its other public filings. Forward-looking statements are not guarantees of future performance and such information is inherently subject to known and unknown risks, uncertainties and other factors that are difficult to predict and may be beyond the control of Wallbridge. Although Wallbridge has attempted to identify important risks and factors that could cause actual actions, events or results to differ materially from those described in forward-looking statements,

there may be other factors and risks that cause actions, events or results not to be as anticipated, estimated or intended. Consequently, undue reliance should not be placed on such forward-looking statements. In addition, all forward-looking statements in this press release are given as of the date hereof.

Wallbridge disclaims any intention or obligation to update or revise any forward-looking statements, whether as a result of new information, future events or otherwise, save and except as may be required by applicable securities laws. The forward-looking statements contained herein are expressly qualified by this disclaimer.