

# Diagram 1: 2018 Infill Drilling Results

## 2018 Mineral Resource Block Model @ 3.0 g/t Au Cut-off Grade Zone 2

Longitudinal view looking east (mine grid)

### Drill hole intercept grades

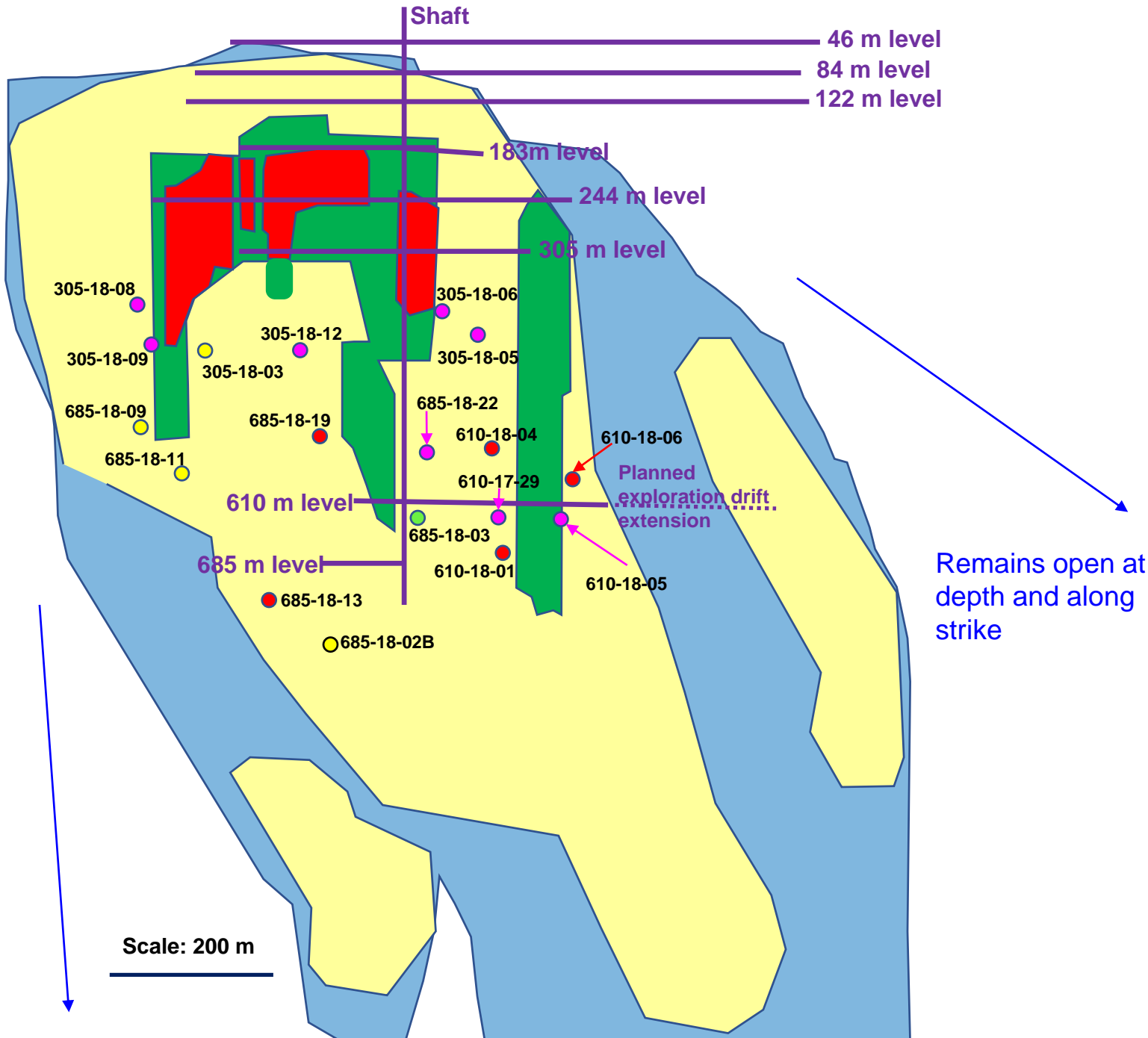
- 10+ g/t Au
- 7-10 g/t Au
- 5-7 g/t Au
- 3-5 g/t Au
- 1-3 g/t Au

### 2018 Mineral Resource Block Model Categories

- Measured
- Indicated
- Inferred
- Exploration Targets\*

\*Not a mineral resource category (greater than 80-metre drill centres) but contains sparsely drilled mineralized material

Existing underground development



# Diagram 2: 2018 Infill Drilling Results

## 2018 Mineral Resource Block Model @ 3.0 g/t Au Cut-off Grade Zone 2

305 m level Plan view (mine grid)

Infill drill holes:

Section (1) 305-18-08

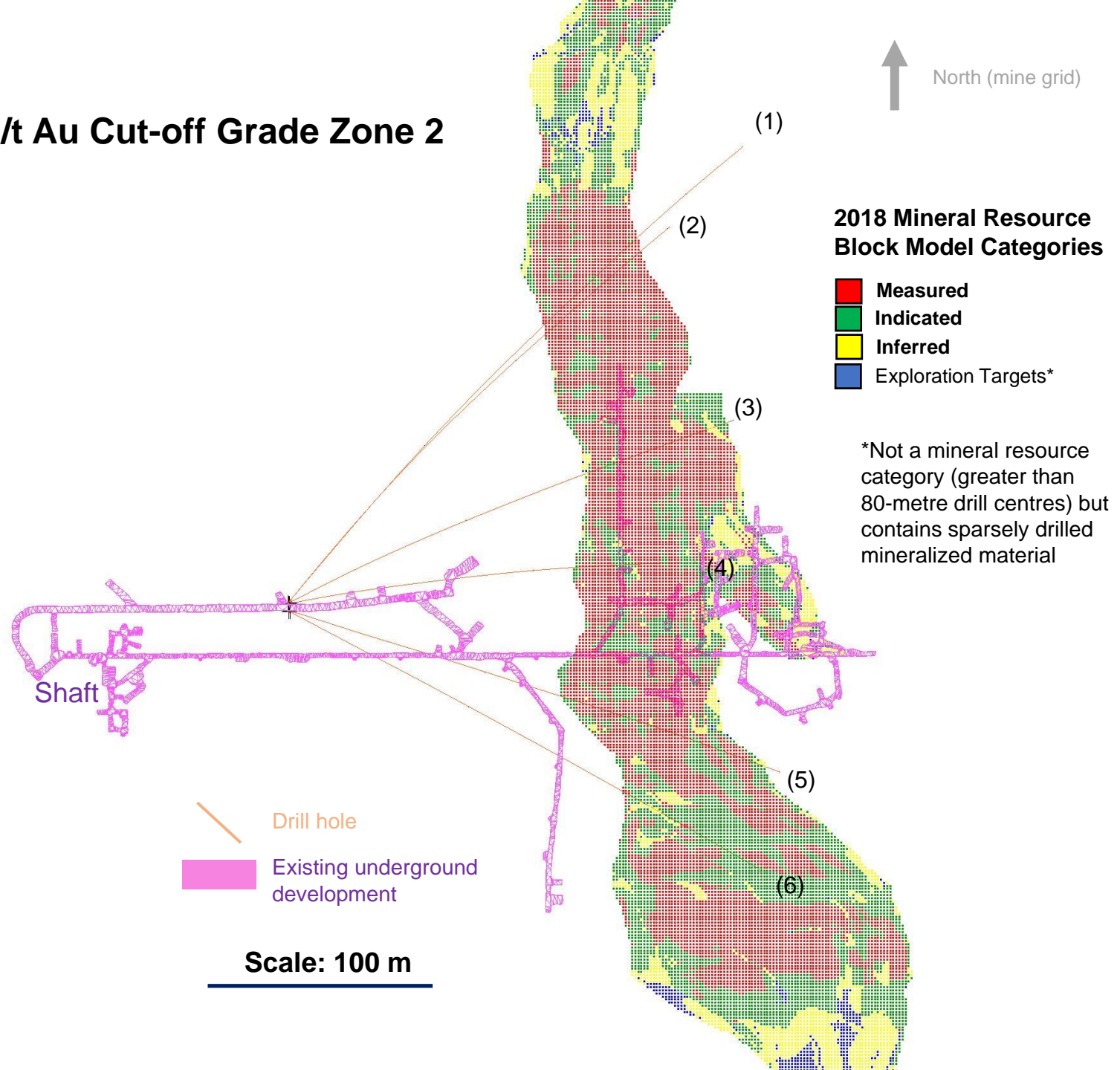
Section (2) 305-18-09

Section (3) 305-18-03

Section (4) 305-18-12

Section (5) 305-18-06

Section (6) 305-18-05



# Diagram 3: 2018 Infill Drilling Results

Section view (1) hole 305-18-08 looking north (mine grid)

**Drill hole intercept grades**

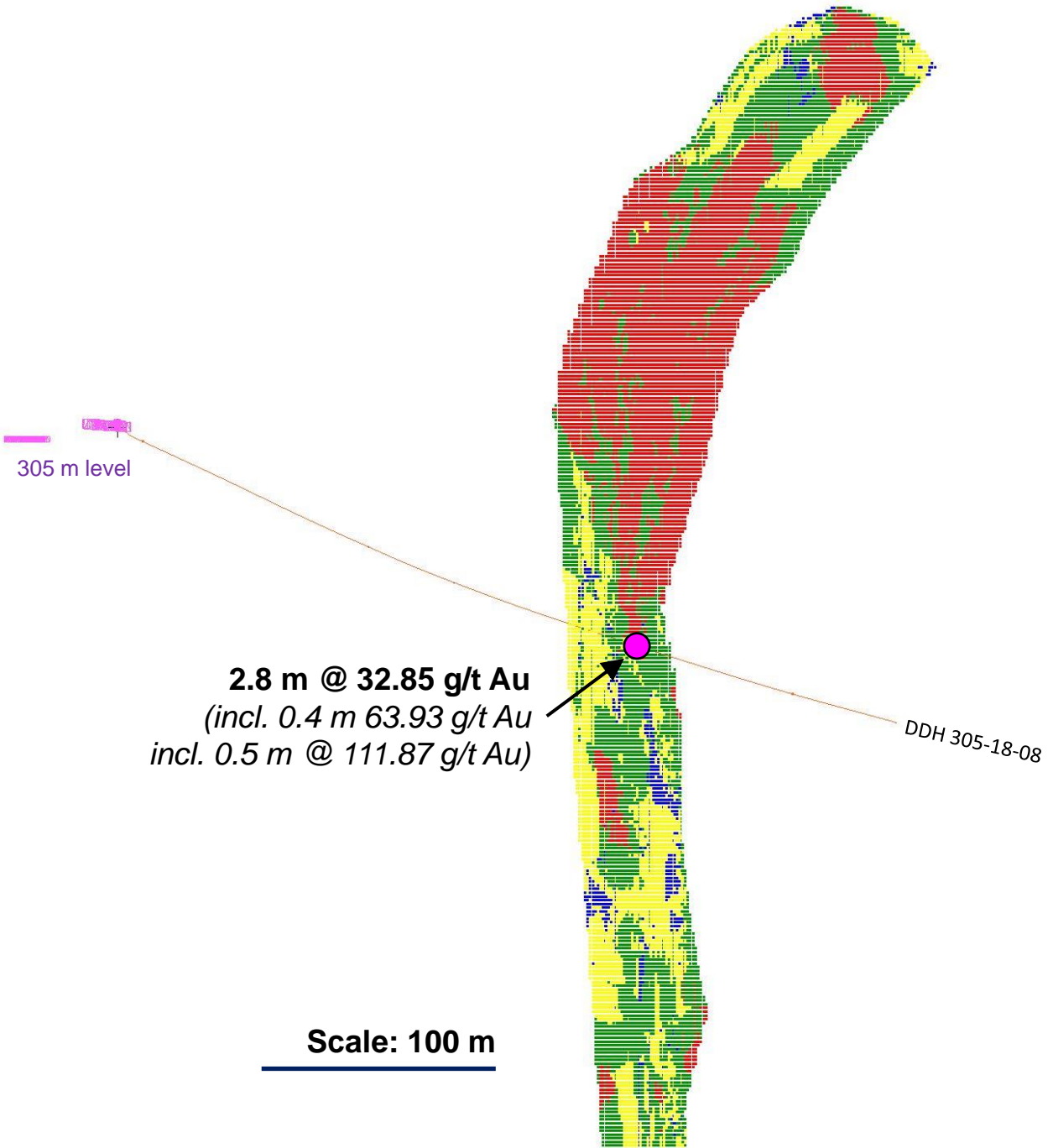
- 10+ g/t Au
- 7-10 g/t Au
- 5-7 g/t Au
- 3-5 g/t Au
- 1-3 g/t Au

**2018 Mineral Resource Block Model Categories**

- Measured
- Indicated
- Inferred
- Exploration Targets\*

\*Not a mineral resource category (greater than 80-metre drill centres) but contains sparsely drilled mineralized material

- Drill hole
- █ Existing underground development



# Diagram 4: 2018 Infill Drilling Results

Section view (2) hole 305-18-09 looking north (mine grid)

### Drill hole intercept grades

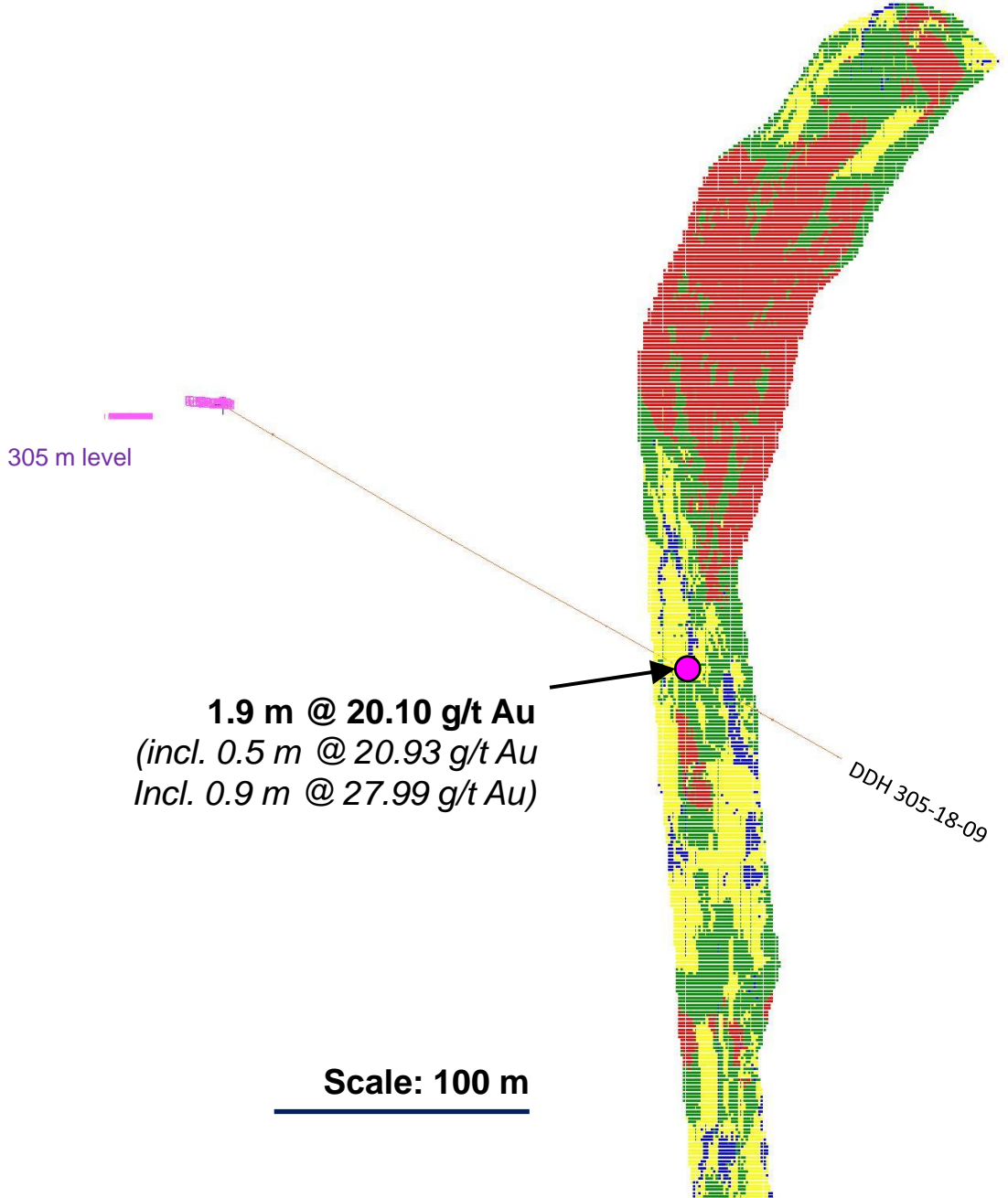
- 10+ g/t Au
- 7-10 g/t Au
- 5-7 g/t Au
- 3-5 g/t Au
- 1-3 g/t Au

### 2018 Mineral Resource Block Model Categories

- Measured
- Indicated
- Inferred
- Exploration Targets\*

\*Not a mineral resource category (greater than 80-metre drill centres) but contains sparsely drilled mineralized material

- Drill hole
- Existing underground development



# Diagram 5: 2018 Infill Drilling Results

Section view (3) hole 305-18-03 looking north (mine grid)

### Drill hole intercept grades

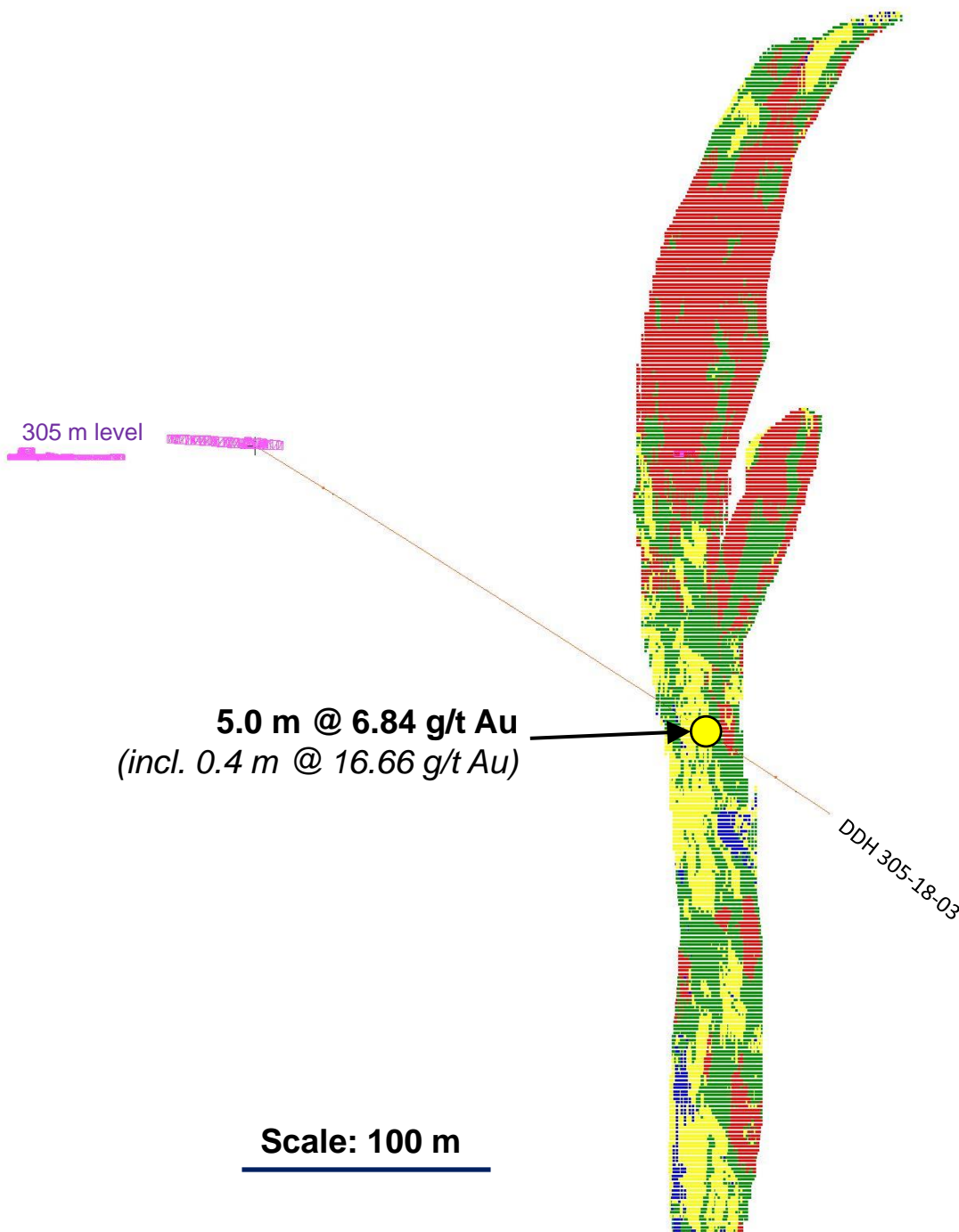
- 10+ g/t Au
- 7-10 g/t Au
- 5-7 g/t Au
- 3-5 g/t Au
- 1-3 g/t Au

### 2018 Mineral Resource Block Model Categories

- Measured
- Indicated
- Inferred
- Exploration Targets\*

\*Not a mineral resource category (greater than 80-metre drill centres) but contains sparsely drilled mineralized material

- Drill hole
- Existing underground development



**5.0 m @ 6.84 g/t Au**  
(incl. 0.4 m @ 16.66 g/t Au)

**Scale: 100 m**

# Diagram 6: 2018 Infill Drilling Results

Section view (4) hole 305-18-12 looking north (mine grid)

### Drill hole intercept grades

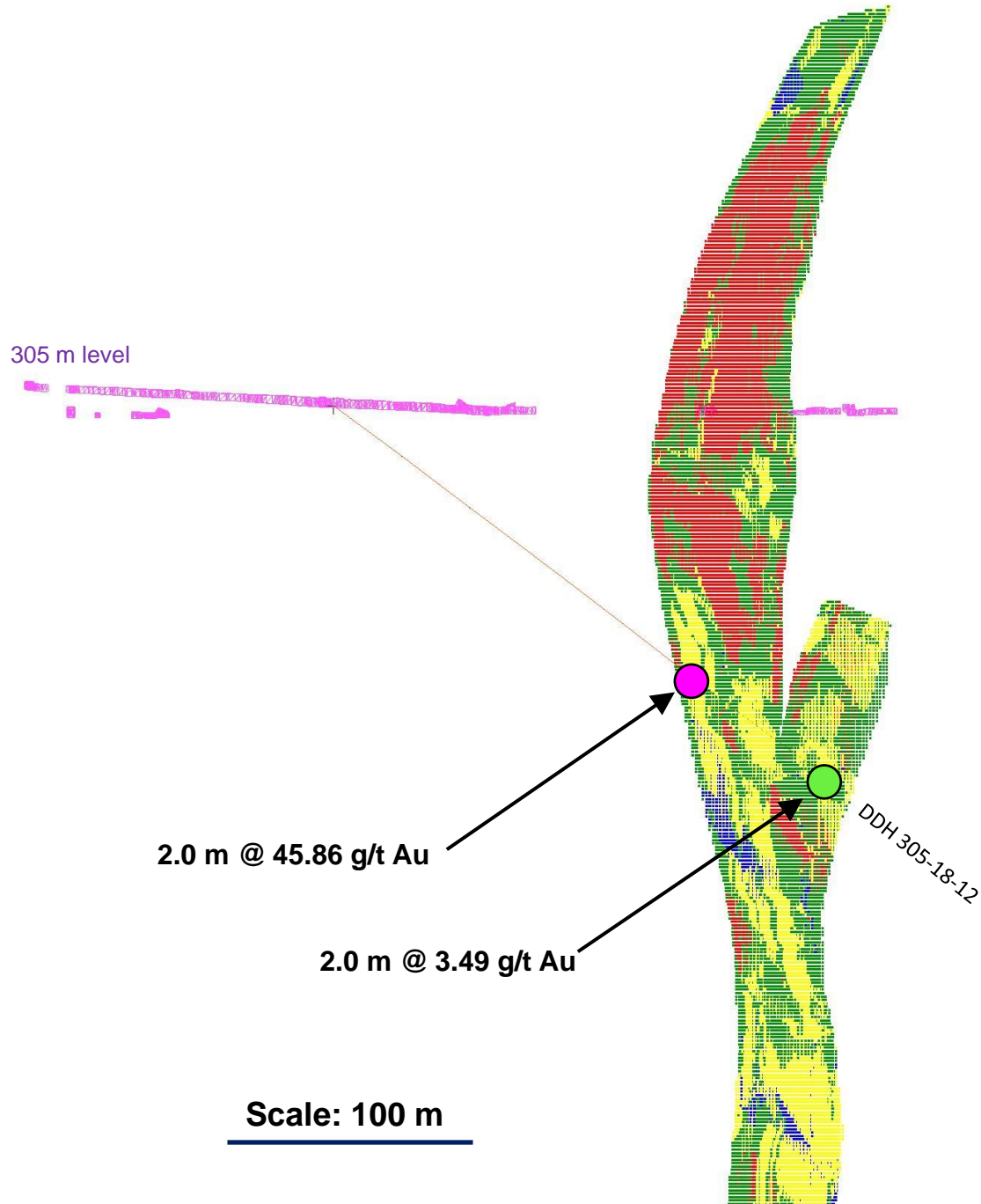
- 10+ g/t Au
- 7-10 g/t Au
- 5-7 g/t Au
- 3-5 g/t Au
- 1-3 g/t Au

### 2018 Mineral Resource Block Model Categories

- Measured
- Indicated
- Inferred
- Exploration Targets\*

\*Not a mineral resource category (greater than 80-metre drill centres) but contains sparsely drilled mineralized material

- Drill hole
- Existing underground development



# Diagram 7: 2018 Infill Drilling Results

Section view (5) hole 305-18-06 looking north (mine grid)

**Drill hole intercept grades**

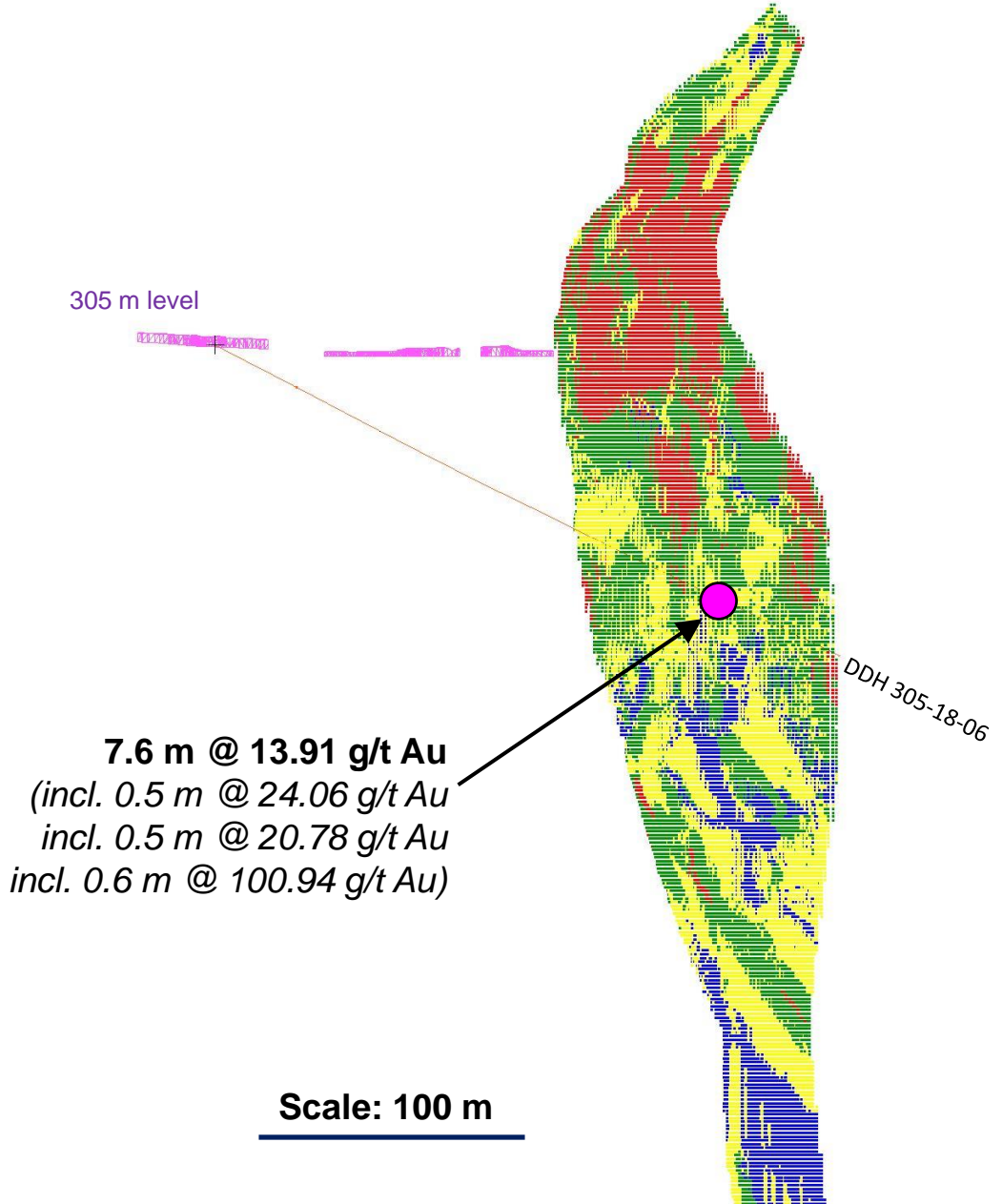
- 10+ g/t Au
- 7-10 g/t Au
- 5-7 g/t Au
- 3-5 g/t Au
- 1-3 g/t Au

**2018 Mineral Resource Block Model Categories**

- Measured
- Indicated
- Inferred
- Exploration Targets\*

\*Not a mineral resource category (greater than 80-metre drill centres) but contains sparsely drilled mineralized material

- Drill hole
- Existing underground development



**Scale: 100 m**

# Diagram 8: 2018 Infill Drilling Results

Section view (6) hole 305-18-05 looking north (mine grid)

### Drill hole intercept grades

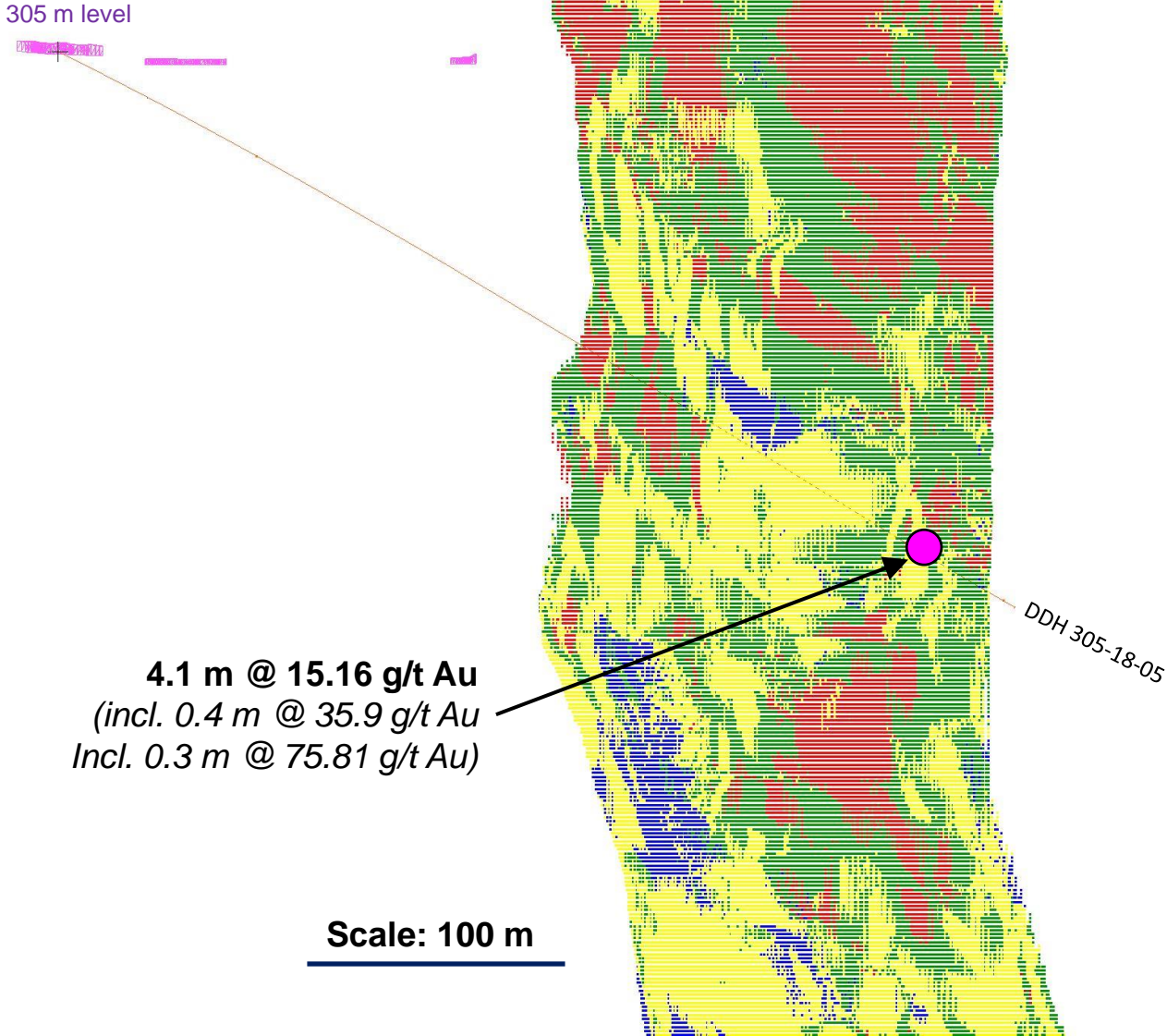
- 10+ g/t Au
- 7-10 g/t Au
- 5-7 g/t Au
- 3-5 g/t Au
- 1-3 g/t Au

### 2018 Mineral Resource Block Model Categories

- Measured
- Indicated
- Inferred
- Exploration Targets\*

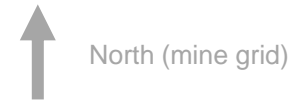
\*Not a mineral resource category (greater than 80-metre drill centres) but contains sparsely drilled mineralized material

- Drill hole
- Existing underground development





# Diagram 9: 2018 Infill Drilling Results

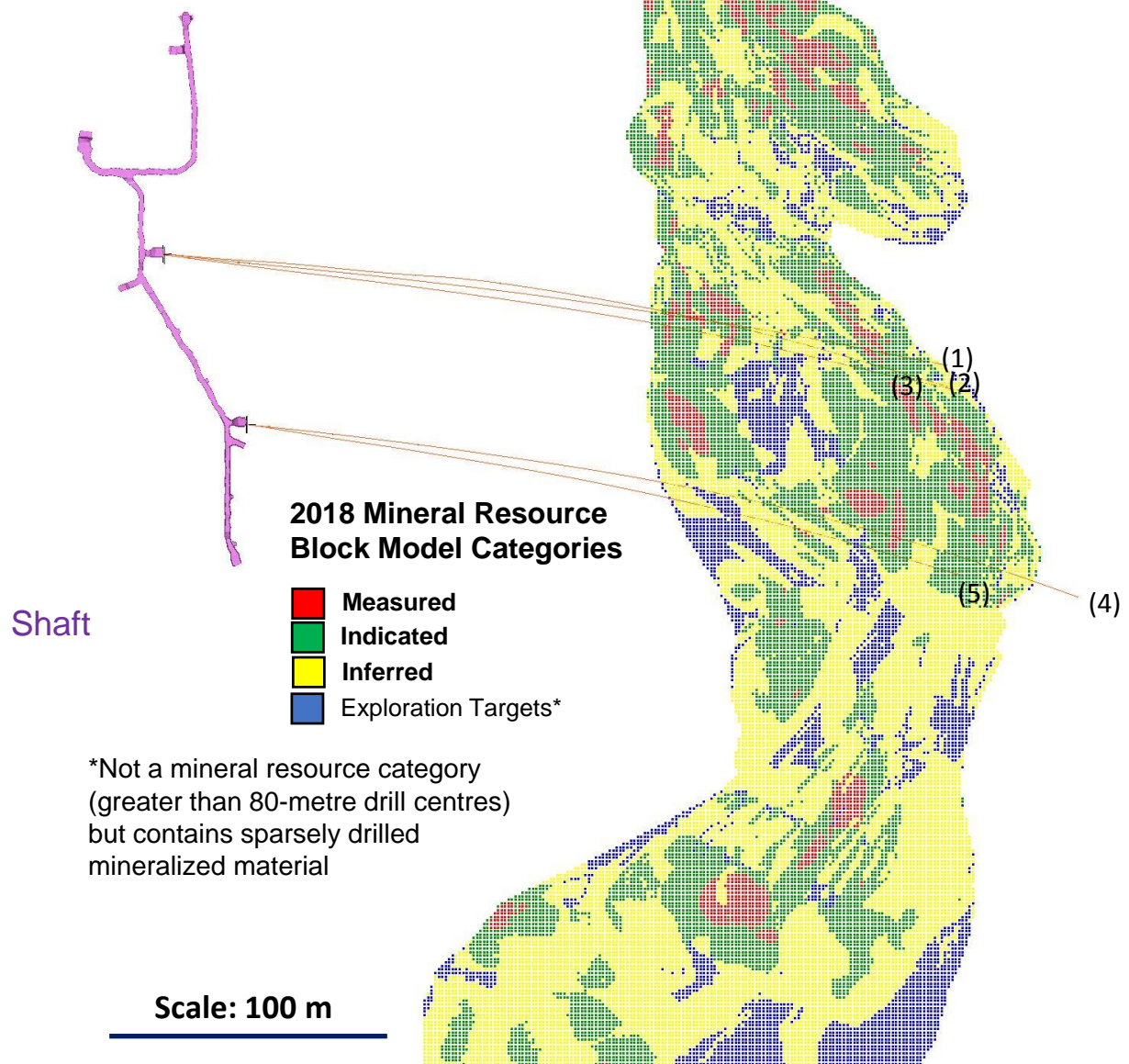


## 2018 Mineral Resource Block Model @ 3.0 g/t Au Cut-off Grade Zone 2

610 m level Plan view (mine grid)

Infill drill holes:

- Section (1) 610-17-29
- Section (2) 610-18-04
- Section (3) 610-18-01
- Section (4) 610-18-05
- Section (5) 610-18-06



Shaft

(1)  
(2)  
(3)  
(4)  
(5)

# Diagram 10: 2018 Infill Drilling Results

Section view (1) hole 610-17-29 looking north (mine grid)

### Drill hole intercept grades

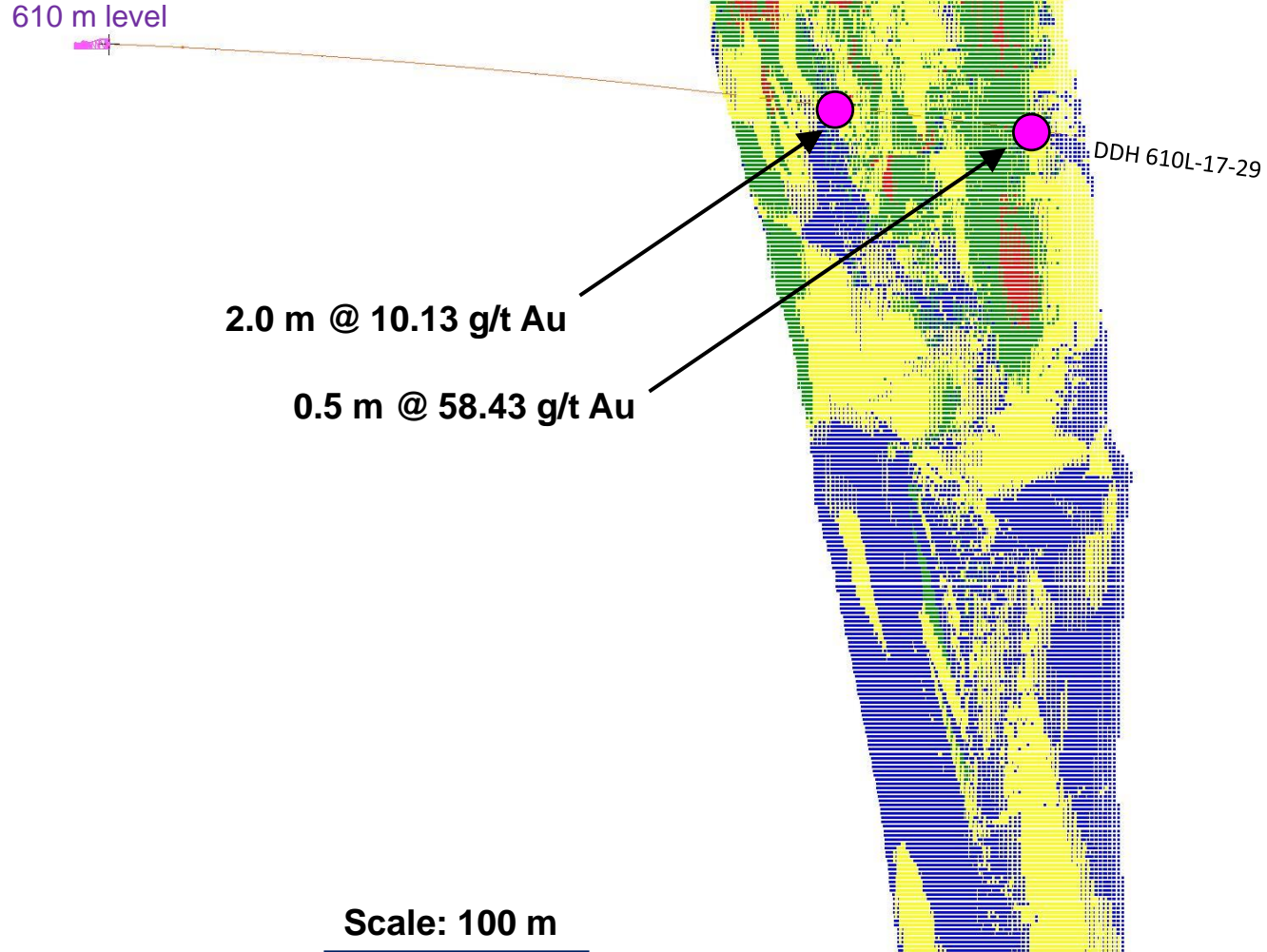
- 10+ g/t Au
- 7-10 g/t Au
- 5-7 g/t Au
- 3-5 g/t Au
- 1-3 g/t Au

### 2018 Mineral Resource Block Model Categories

- Measured
- Indicated
- Inferred
- Exploration Targets\*

\*Not a mineral resource category (greater than 80-metre drill centres) but contains sparsely drilled mineralized material

- Drill hole
- Existing underground development



# Diagram 11: 2018 Infill Drilling Results

Section view (2) hole 610-18-04 looking north (mine grid)

### Drill hole intercept grades

- 10+ g/t Au
- 7-10 g/t Au
- 5-7 g/t Au
- 3-5 g/t Au
- 1-3 g/t Au

### 2018 Mineral Resource Block Model Categories

- Measured
- Indicated
- Inferred
- Exploration Targets\*

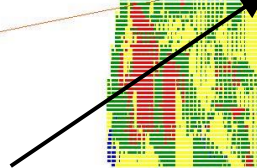
\*Not a mineral resource category (greater than 80-metre drill centres) but contains sparsely drilled mineralized material

- Drill hole
- Existing underground development

610 m level

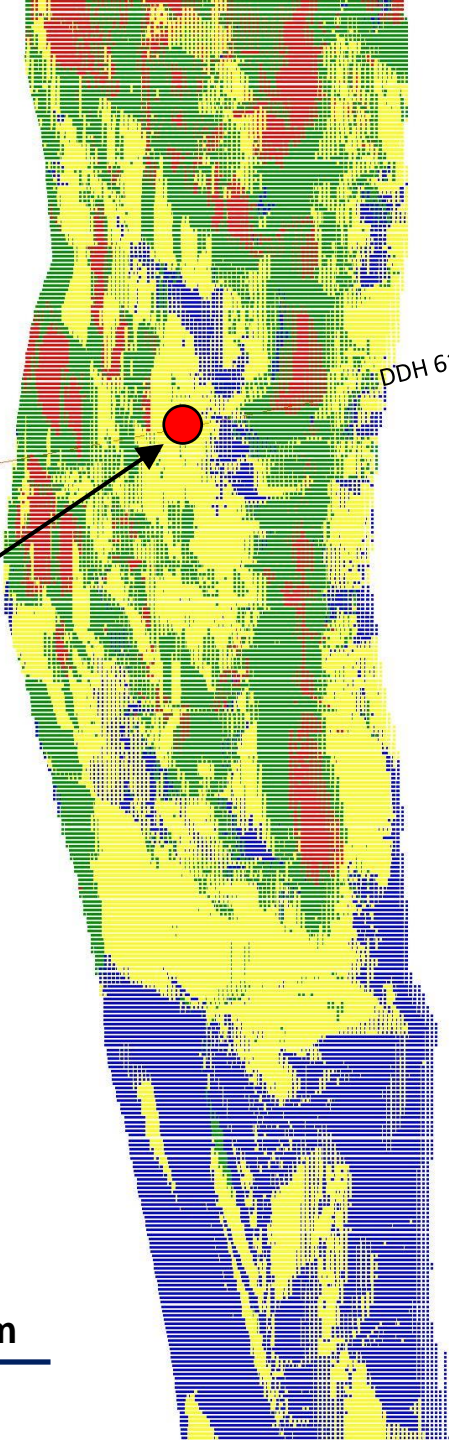


**3.0 m @ 8.34 g/t Au**  
*(incl. 0.5 m @ 19.24 g/t Au)*



DDH 610L-18-04

**Scale: 100 m**



# Diagram 12: 2018 Infill Drilling Results

Section view (3) hole 610-18-01 looking north (mine grid)

### Drill hole intercept grades

- 10+ g/t Au
- 7-10 g/t Au
- 5-7 g/t Au
- 3-5 g/t Au
- 1-3 g/t Au

### 2018 Mineral Resource Block Model Categories

- Measured
- Indicated
- Inferred
- Exploration Targets\*

\*Not a mineral resource category (greater than 80-metre drill centres) but contains sparsely drilled mineralized material

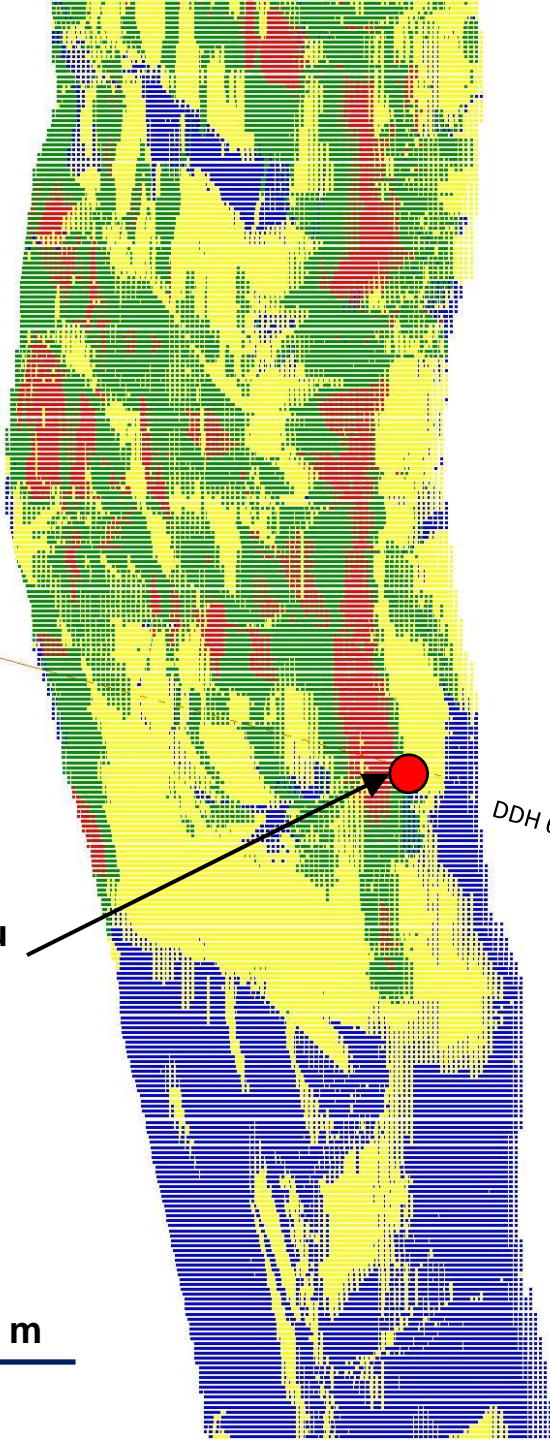
- Drill hole
- Existing underground development

610 m level

1.6 m @ 9.72 g/t Au  
(incl. 0.5 m @ 17.46 g/t Au)

DDH 610L-18-01

Scale: 100 m



# Diagram 13: 2018 Infill Drilling Results

Section view (4) hole 610-18-05 looking north (mine grid)

### Drill hole intercept grades

- 10+ g/t Au
- 7-10 g/t Au
- 5-7 g/t Au
- 3-5 g/t Au
- 1-3 g/t Au

### 2018 Mineral Resource Block Model Categories

- Measured
- Indicated
- Inferred
- Exploration Targets\*

\*Not a mineral resource category (greater than 80-metre drill centres) but contains sparsely drilled mineralized material

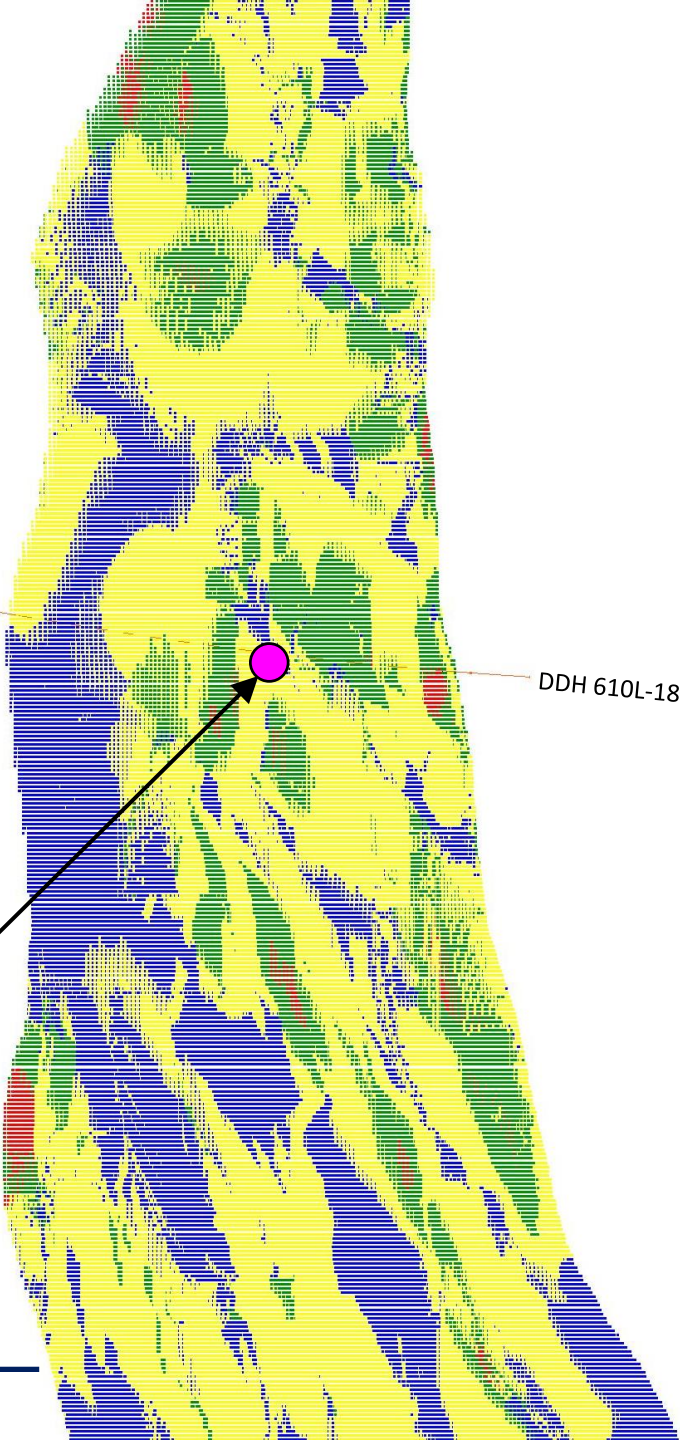
- Drill hole
- Existing underground development

610 m level

DDH 610L-18-05

**7.9 m @ 16.73 g/t Au**  
(incl. 0.6 m @ 67.06 g/t Au  
incl. 0.4 m @ 15.77 g/t Au  
incl. 0.8 m @ 22.77 g/t Au  
incl. 0.6 m @ 42.25 g/t Au)

**Scale: 100 m**



# Diagram 14: 2018 Infill Drilling Results

Section view (5) hole 610-18-06 looking north (mine grid)

### Drill hole intercept grades

- 10+ g/t Au
- 7-10 g/t Au
- 5-7 g/t Au
- 3-5 g/t Au
- 1-3 g/t Au

### 2018 Mineral Resource Block Model Categories

- Measured
- Indicated
- Inferred
- Exploration Targets\*

\*Not a mineral resource category (greater than 80-metre drill centres) but contains sparsely drilled mineralized material

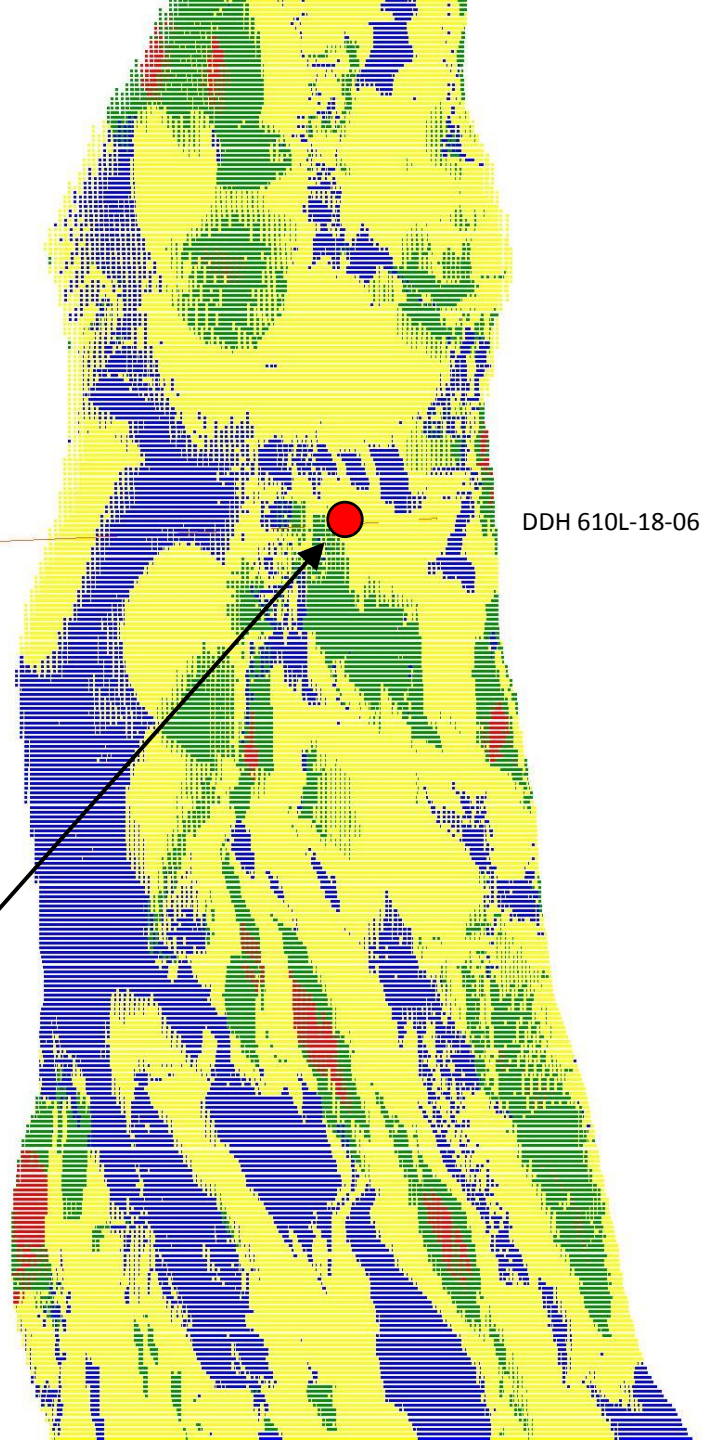
- Drill hole
- Existing underground development

610 m level

DDH 610L-18-06

**7.1 m @ 7.54 g/t Au**  
*(incl. 0.5 m @ 19.53 g/t Au)*

Scale: 100 m



# Diagram 15: 2018 Infill Drilling Results

## 2018 Mineral Resource Block Model @ 3.0 g/t Au Cut-off Grade Zone 2

685 m level Plan view (mine grid)

Infill drill holes:

Section (1) 685-18-09

Section (2) 685-18-11

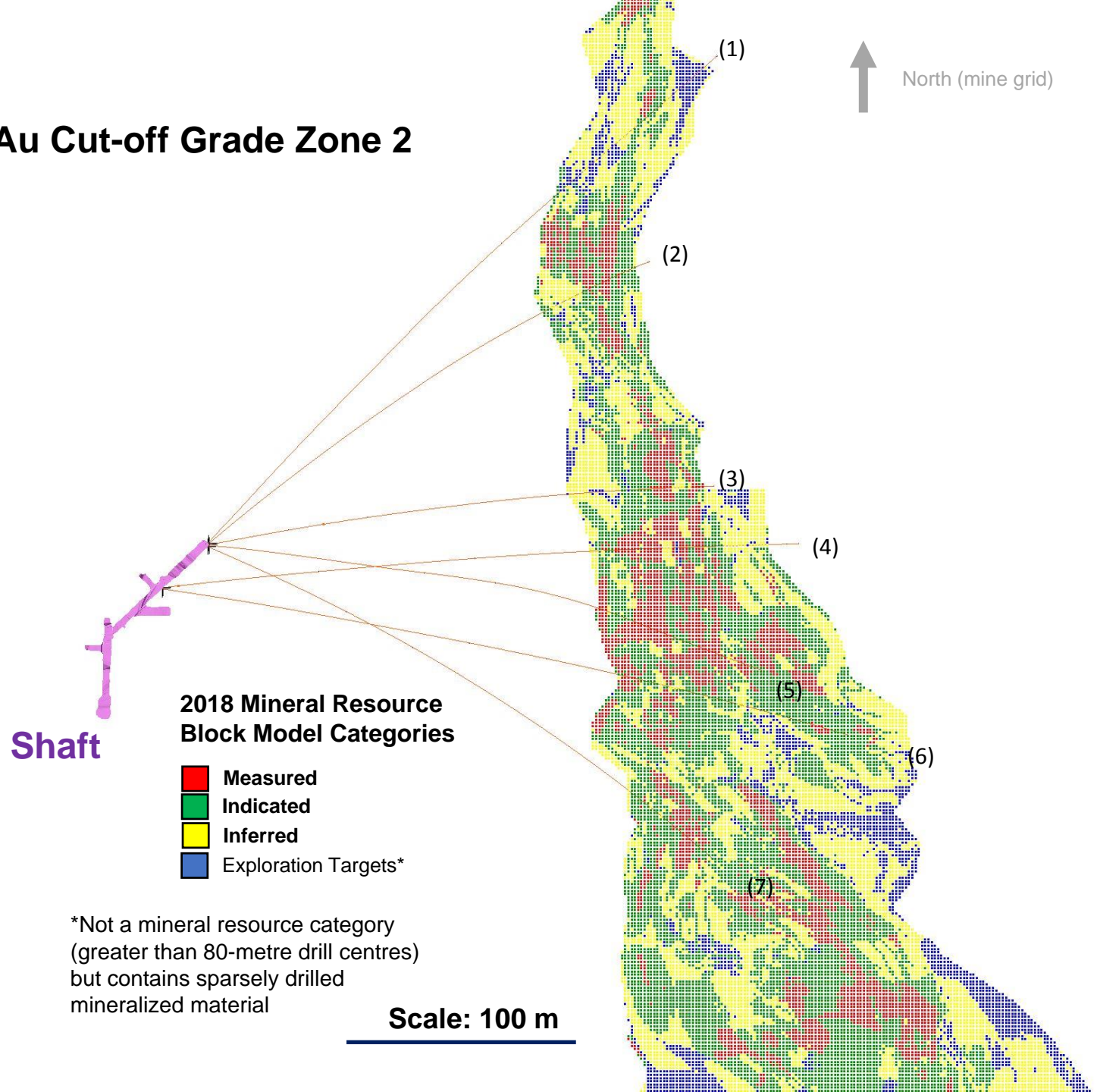
Section (3) 685-18-13

Section (4) 685-18-02B

Section (5) 685-18-19

Section (6) 685-18-03

Section (7) 685-18-22



Shaft

North (mine grid)

# Diagram 16: 2018 Infill Drilling Results

Section view (1) hole 685-18-09 looking north (mine grid)

### Drill hole intercept grades

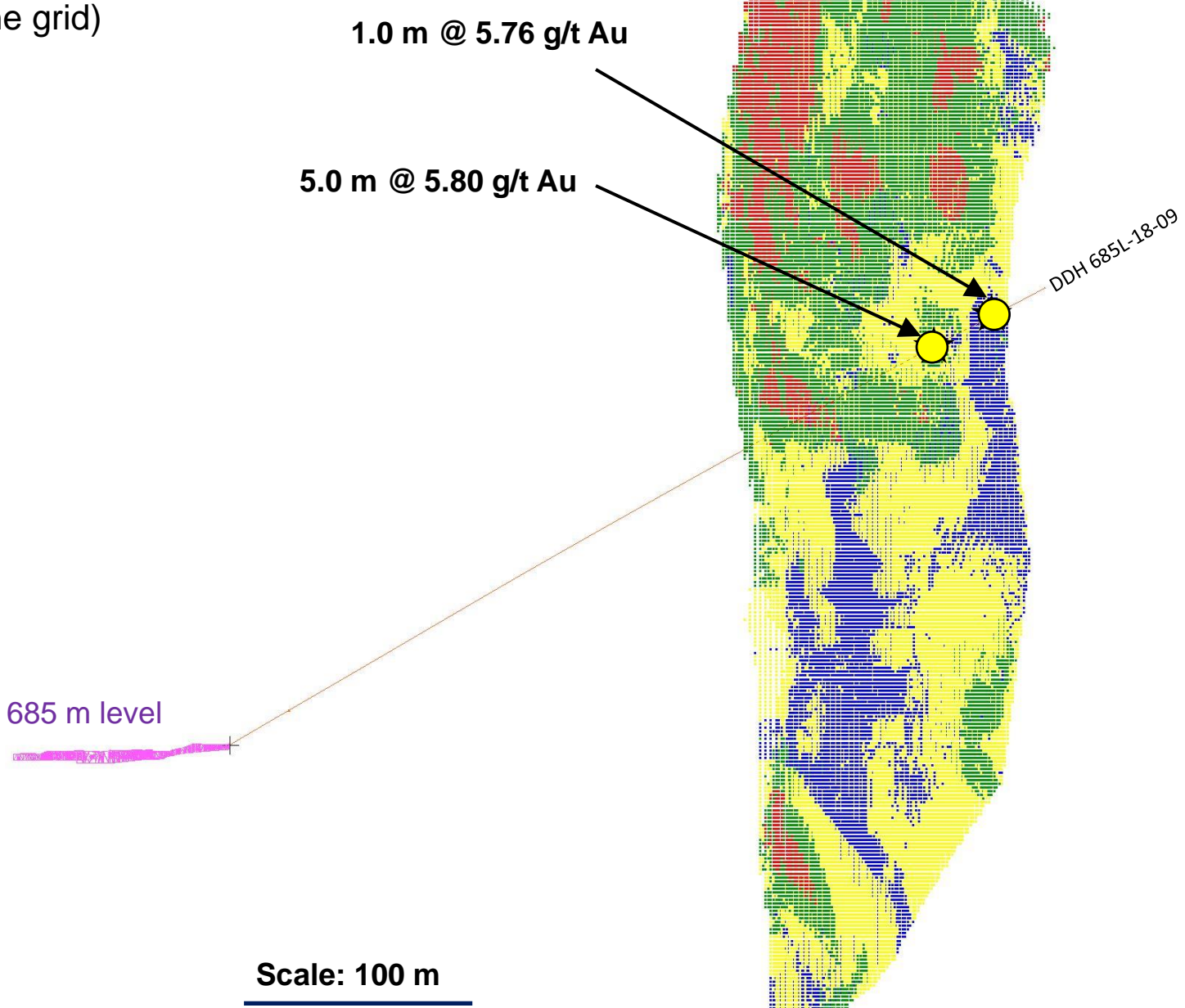
- 10+ g/t Au
- 7-10 g/t Au
- 5-7 g/t Au
- 3-5 g/t Au
- 1-3 g/t Au

### 2018 Mineral Resource Block Model Categories

- Measured
- Indicated
- Inferred
- Exploration Targets\*

\*Not a mineral resource category (greater than 80-metre drill centres) but contains sparsely drilled mineralized material

- Drill hole
- Existing underground development





# Diagram 17: 2018 Infill Drilling Results

Section view (2) hole 685-18-11 looking north (mine grid)

### Drill hole intercept grades

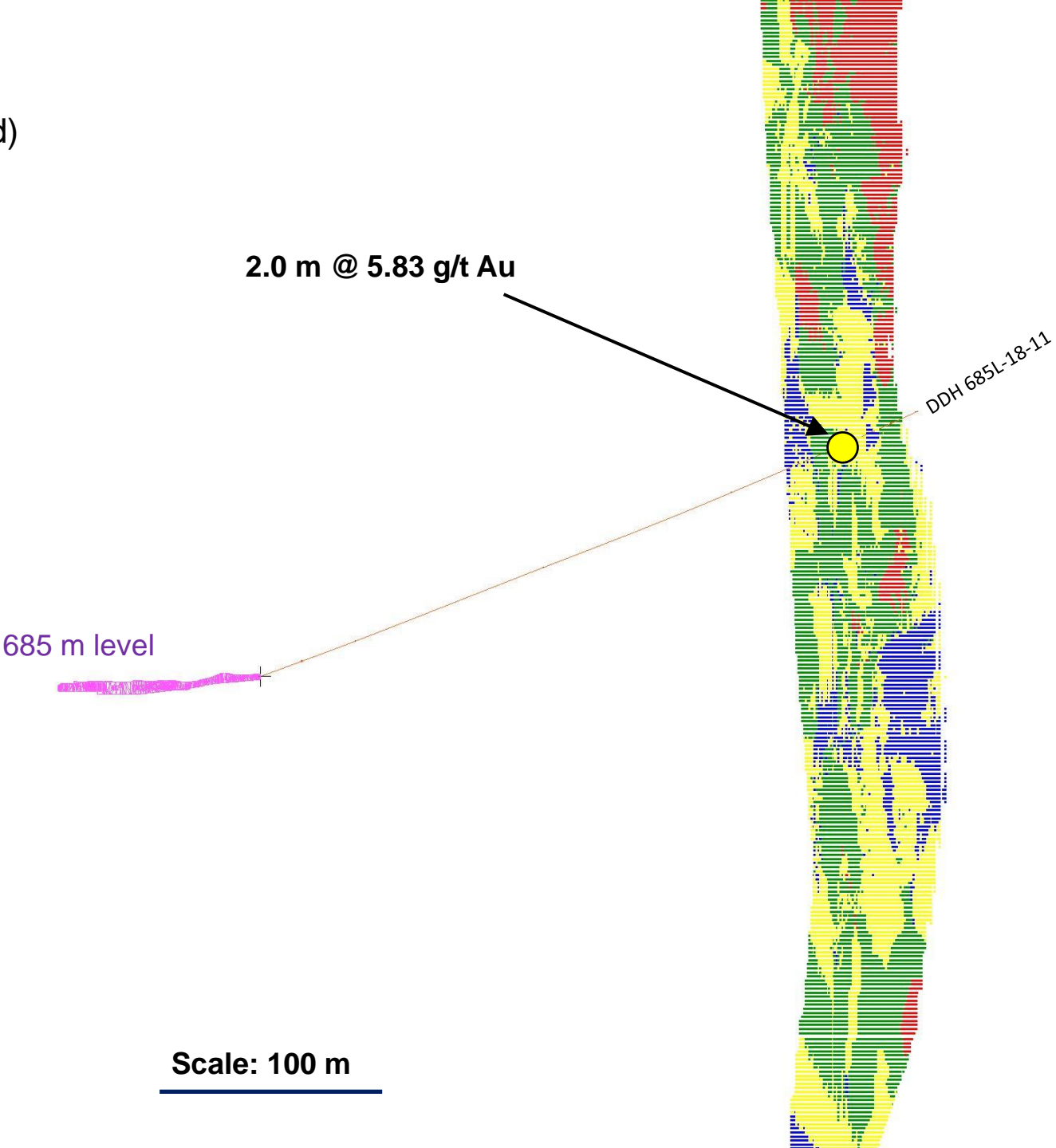
- 10+ g/t Au
- 7-10 g/t Au
- 5-7 g/t Au
- 3-5 g/t Au
- 1-3 g/t Au

### 2018 Mineral Resource Block Model Categories

- Measured
- Indicated
- Inferred
- Exploration Targets\*

\*Not a mineral resource category (greater than 80-metre drill centres) but contains sparsely drilled mineralized material

- Drill hole
- Existing underground development



# Diagram 18: 2018 Infill Drilling Results

Section view (3) hole 685-18-13 looking north (mine grid)

**Drill hole intercept grades**

- 10+ g/t Au
- 7-10 g/t Au
- 5-7 g/t Au
- 3-5 g/t Au
- 1-3 g/t Au

**2018 Mineral Resource Block Model Categories**

- Measured
- Indicated
- Inferred
- Exploration Targets\*

\*Not a mineral resource category (greater than 80-metre drill centres) but contains sparsely drilled mineralized material

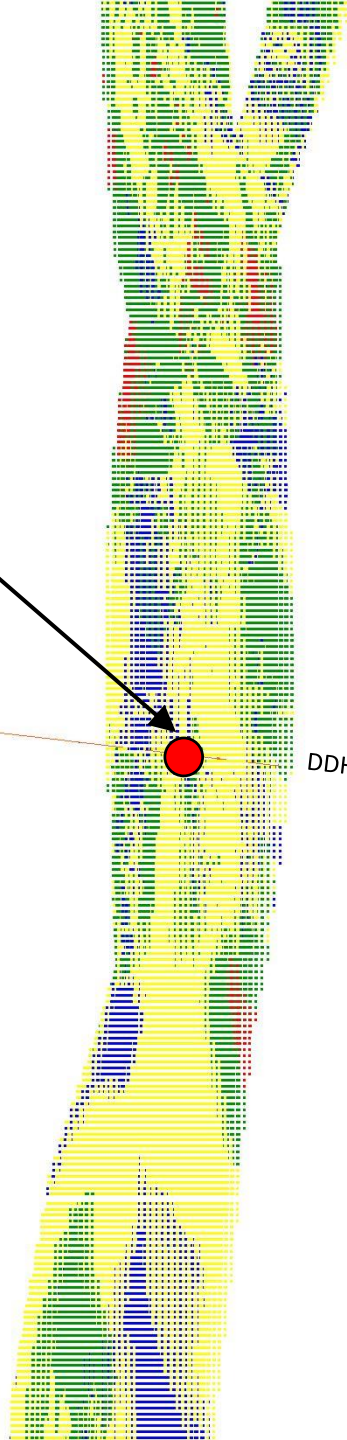
- Drill hole
- Existing underground development

**4.4 m @ 7.33 g/t Au**  
*(incl. 0.6 m @ 18.31 g/t Au  
 incl. 0.5 m @ 22.85 g/t Au)*

685 m level

DDH 685L-18-13

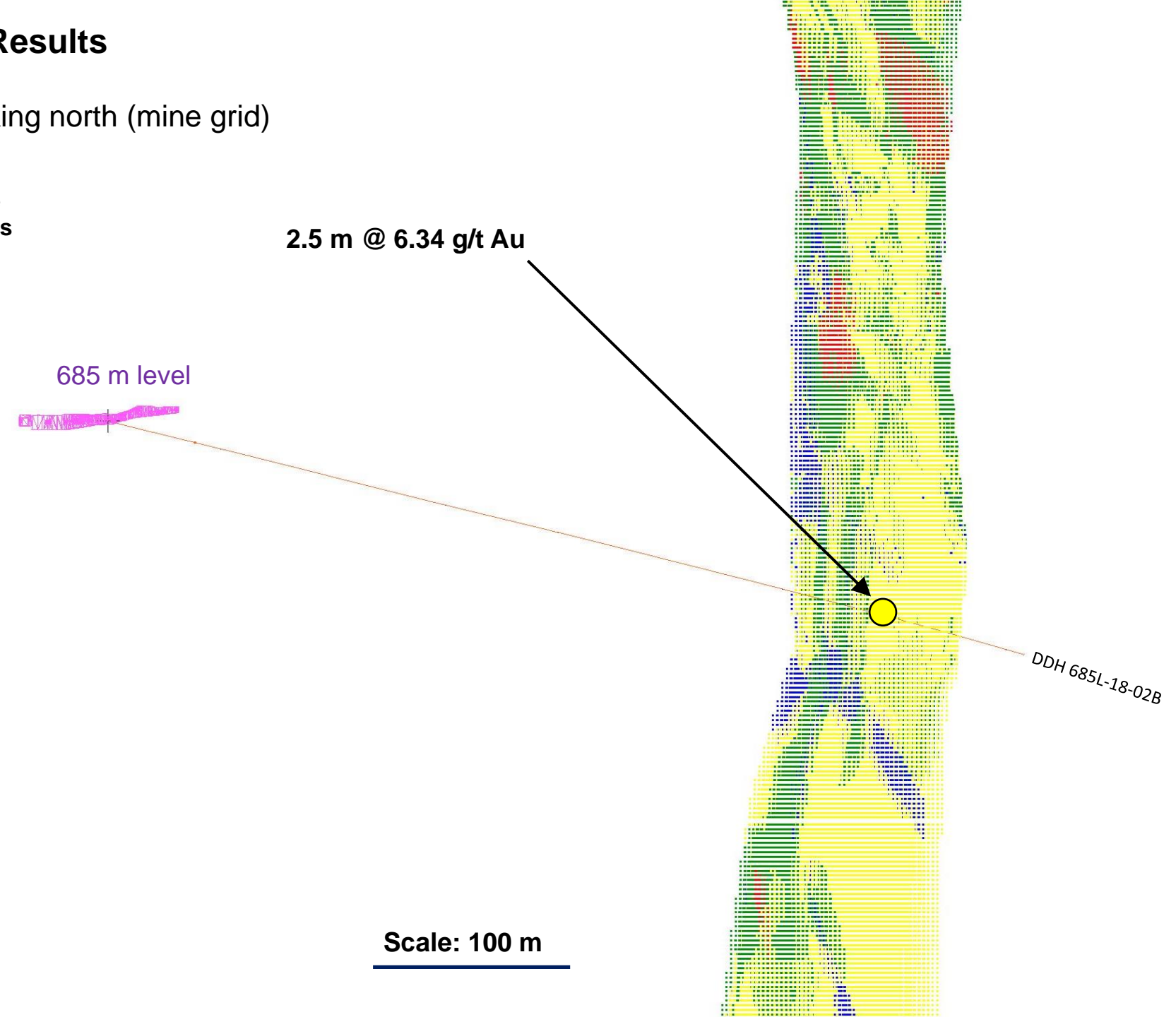
Scale: 100 m



# Diagram 19: 2018 Infill Drilling Results

Section view (4) hole 685-18-02B looking north (mine grid)

- | Drill hole intercept grades | 2018 Mineral Resource Block Model Categories |
|-----------------------------|--|
| 10+ g/t Au                  | Measured                                     |
| 7-10 g/t Au                 | Indicated                                    |
| 5-7 g/t Au                  | Inferred                                     |
| 3-5 g/t Au                  | Exploration Targets*                         |
| 1-3 g/t Au                  |  |
- \*Not a mineral resource category (greater than 80-metre drill centres) but contains sparsely drilled mineralized material
- Drill hole
- Existing underground development



# Diagram 20: 2018 Infill Drilling Results

Section view (5) hole 685-18-19 looking north (mine grid)

### Drill hole intercept grades

- 10+ g/t Au
- 7-10 g/t Au
- 5-7 g/t Au
- 3-5 g/t Au
- 1-3 g/t Au

### 2018 Mineral Resource Block Model Categories

- Measured
- Indicated
- Inferred
- Exploration Targets\*

\*Not a mineral resource category (greater than 80-metre drill centres) but contains sparsely drilled mineralized material

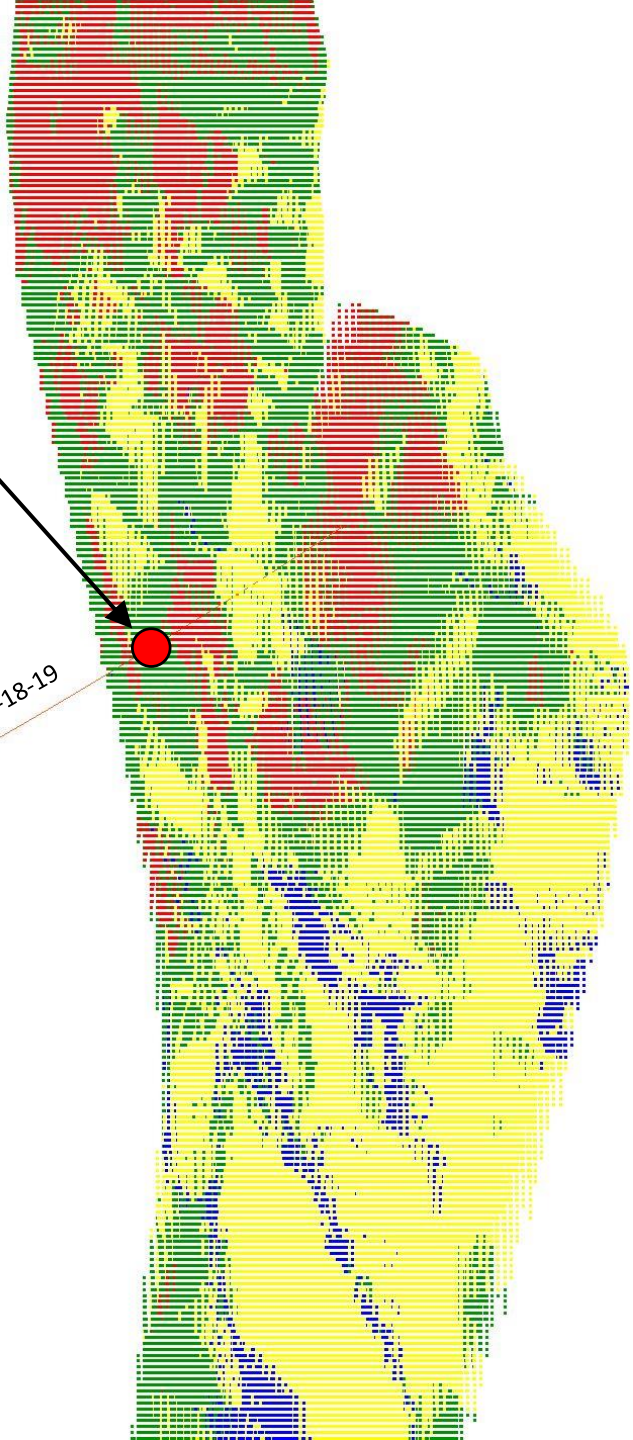
- Drill hole
- Existing underground development

685 m level

1.5 m @ 9.54 g/t Au  
(incl. 0.6 m @ 17.11 g/t Au)

DDH 685L-18-19

Scale: 100 m



# Diagram 21: 2018 Infill Drilling Results

Section view (6) 685-18-03 looking north (mine grid)

### Drill hole intercept grades

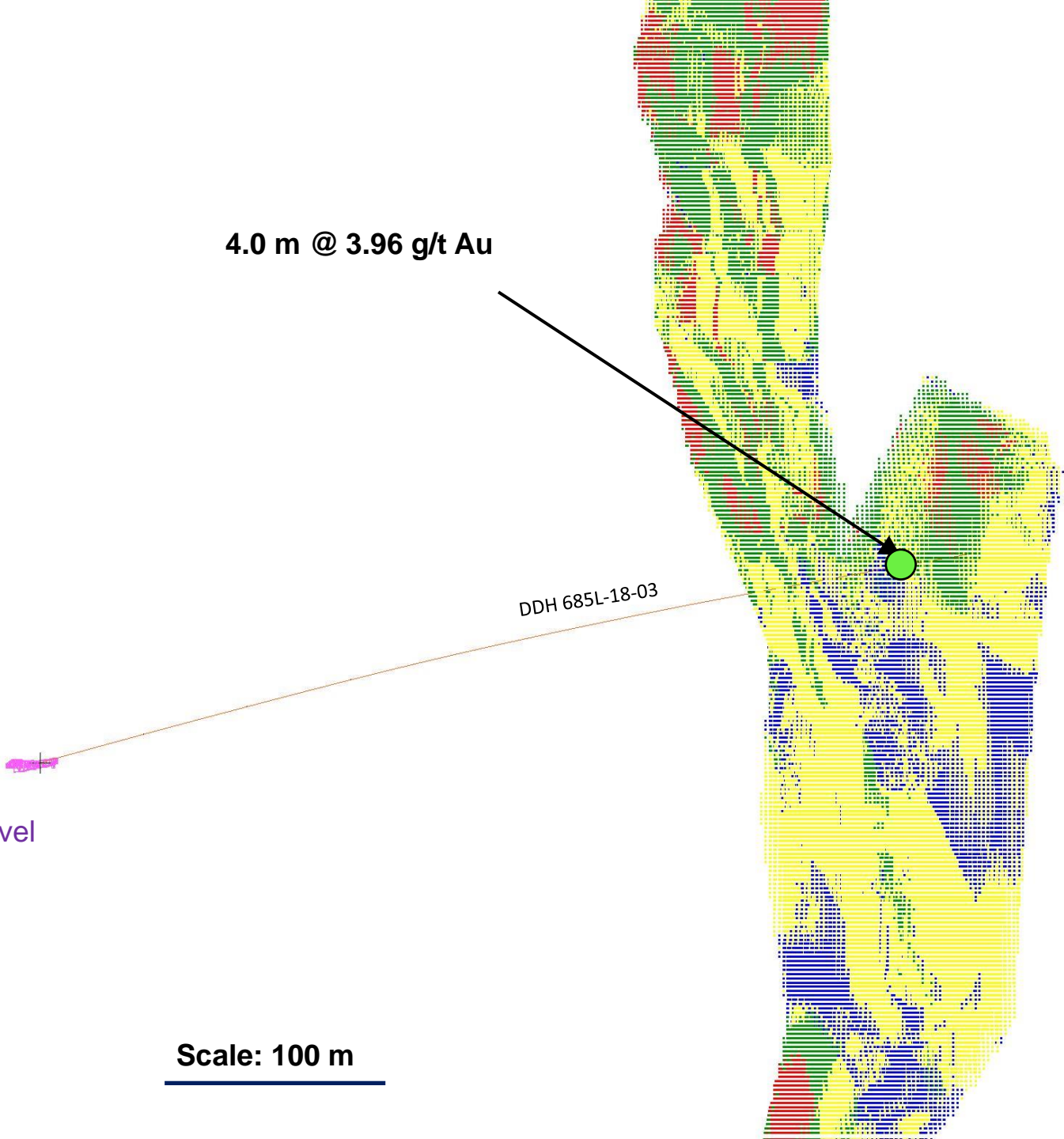
- 10+ g/t Au
- 7-10 g/t Au
- 5-7 g/t Au
- 3-5 g/t Au
- 1-3 g/t Au

### 2018 Mineral Resource Block Model Categories

- Measured
- Indicated
- Inferred
- Exploration Targets\*

\*Not a mineral resource category (greater than 80-metre drill centres) but contains sparsely drilled mineralized material

- Drill hole
- Existing underground development



Scale: 100 m

# Diagram 22: 2018 Infill Drilling Results

Section view (7) 685-18-22 looking north (mine grid)

### Drill hole intercept grades

- 10+ g/t Au
- 7-10 g/t Au
- 5-7 g/t Au
- 3-5 g/t Au
- 1-3 g/t Au

### 2018 Mineral Resource Block Model Categories

- Measured
- Indicated
- Inferred
- Exploration Targets\*

\*Not a mineral resource category (greater than 80-metre drill centres) but contains sparsely drilled mineralized material

Drill hole

Existing underground development

1.8 m @ 10.01 g/t Au

DDH 685L-18-22

685 m level

Scale: 100 m

