

**Diagram 1: McFinley and Close Proximity Targets
(Northern Peninsula, CARZ, and Island Zone) – Plan View**

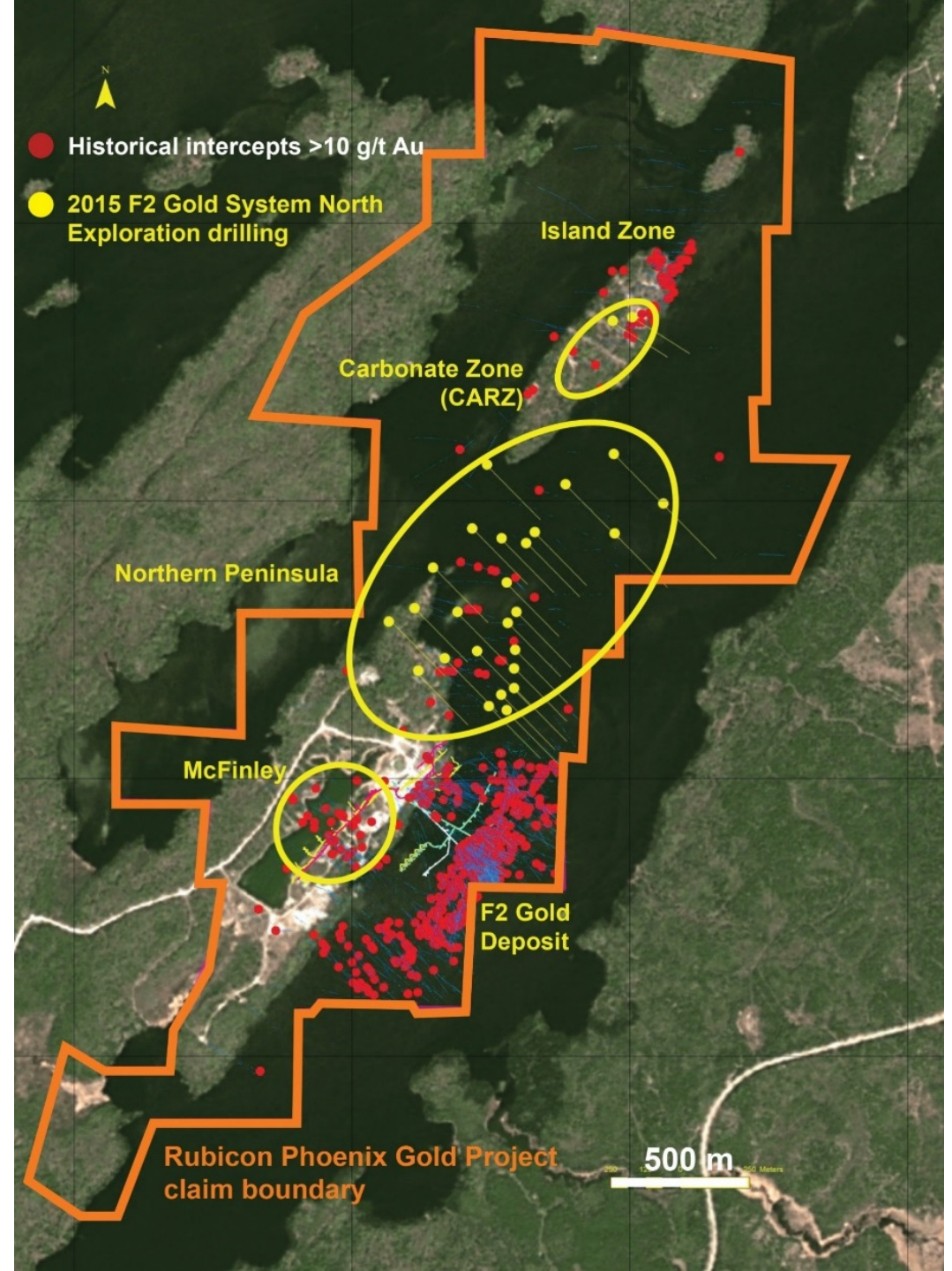
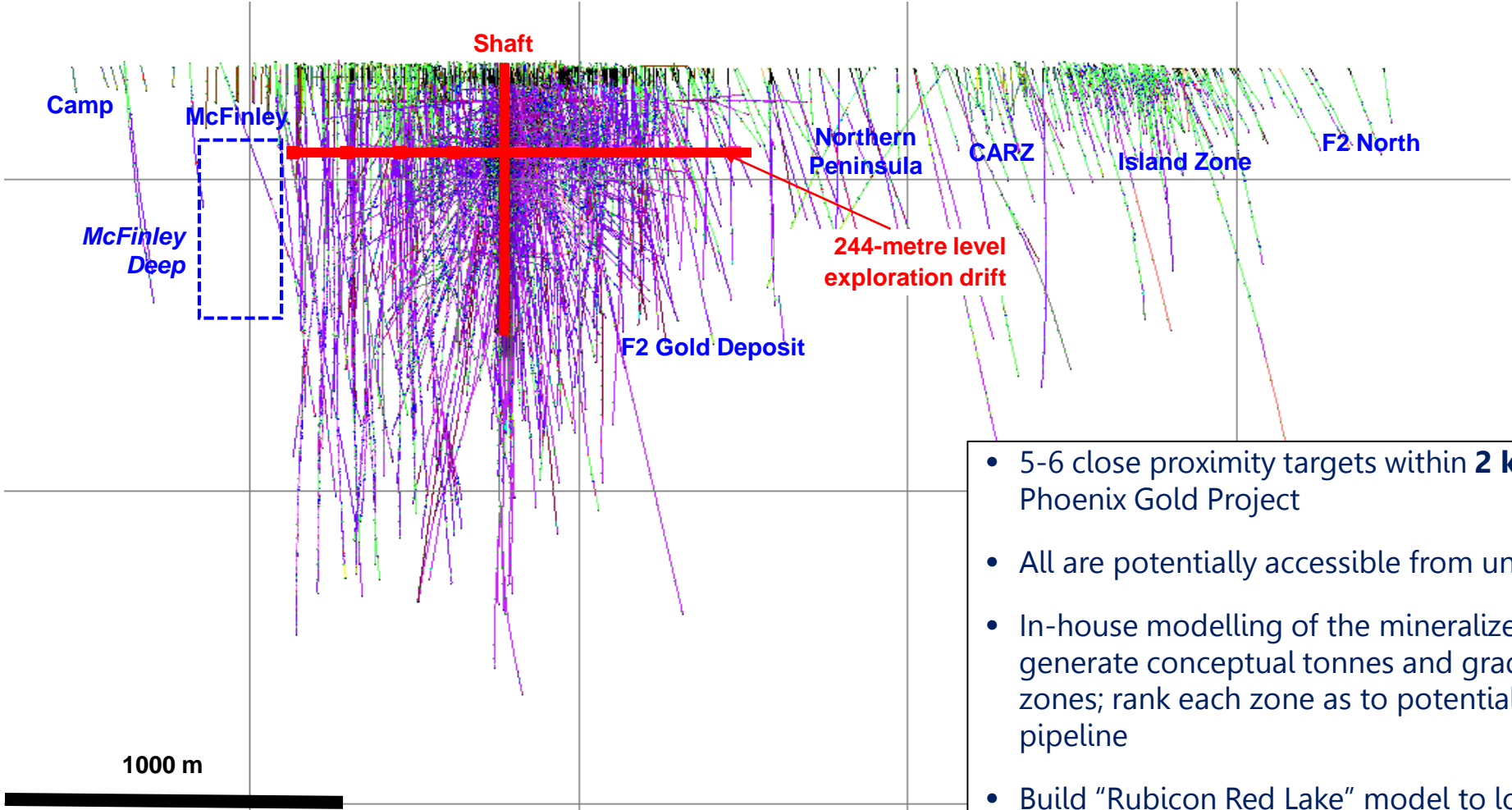


Diagram 2: McFinley and Close Proximity Targets (Northern Peninsula, CARZ, and Island Zone) – Underground Long Section View Looking Northwest



- 5-6 close proximity targets within **2 km** of the Phoenix Gold Project
- All are potentially accessible from underground
- In-house modelling of the mineralized zones and generate conceptual tonnes and grade for the zones; rank each zone as to potential to fit in pipeline
- Build "Rubicon Red Lake" model to look at bigger picture (structural and lithological model)
- **Potentially targeting work in 2018 once priority targets identified**