

EVACUATION ORDER

Waterton Lakes National Park

SEPTEMBER 8, 2017; 13:15

Pursuant to Section 36(1) of the National Parks General Regulations of the *Canada National Parks Act* an Evacuation Order has been issued by order of the Superintendent due to a temporary danger to persons caused by the ongoing wildfire in the park. Members of the RCMP and Parks Canada staff will be expediting this action. Persons deemed essential to the firefighting operation are exempt from this order.

The Evacuation Order is in effect for the following areas:

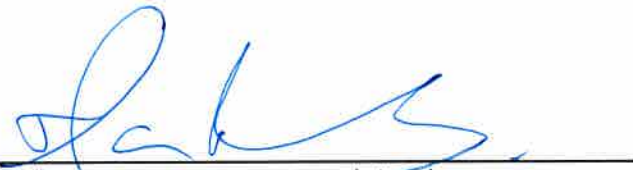
- All areas in Waterton Lakes National Park, including the Waterton Park townsite and all front-country and back-country trails, facilities and areas except for Highways 5 and 6 and the Chief Mountain border crossing.

WHAT YOU SHOULD DO:




- You **must** leave the area **immediately**;
- Follow the travel route provided on the map (see over);
- If you need transportation assistance to leave Waterton, please (a) advise the individual providing you with this in-person notice, (b) go to the Waterton Park Community Centre or (c) call 403-859-5109 if you cannot do (a) or (b);
- Close all windows and doors;
- Shut off all gas and electrical appliances, other than refrigerators and freezers;
- Close gates (latch) but do not lock;
- Gather your family; take a neighbour or someone who needs help;
- Take critical items (medicine, purse, wallet, and keys) only if they are immediately available;
- Take pets in pet kennels or on leash;
- Do **not** use the telephone unless you need emergency service;
- Emergency personnel will check all houses and locations and mark them when cleared;
- Travel will only be permitted **out** of the park. Admittance at the Waterton Lakes National Park gate will be limited to emergency vehicles.
- **All evacuees are strongly recommended to register at the Reception and Evacuation Centre** located in Pincher Creek at the Vertical Church (1200 Ken Thornton Blvd., located just south of Co-Op and Vista Village), even if you do **not** require assistance. Registering will provide a record that you were evacuated and enable authorities to contact you with any new information. You can register by email to mdinfo@mdpincercreek.ab.ca (put in subject line: "Evac Registration") or by phoning 403-904-0021. Please provide name, number in party and a contact phone number.
- If you require **temporary housing or assistance**, please **register at the Reception and Evacuation Centre**.

YOU MUST LEAVE THE AREA IMMEDIATELY

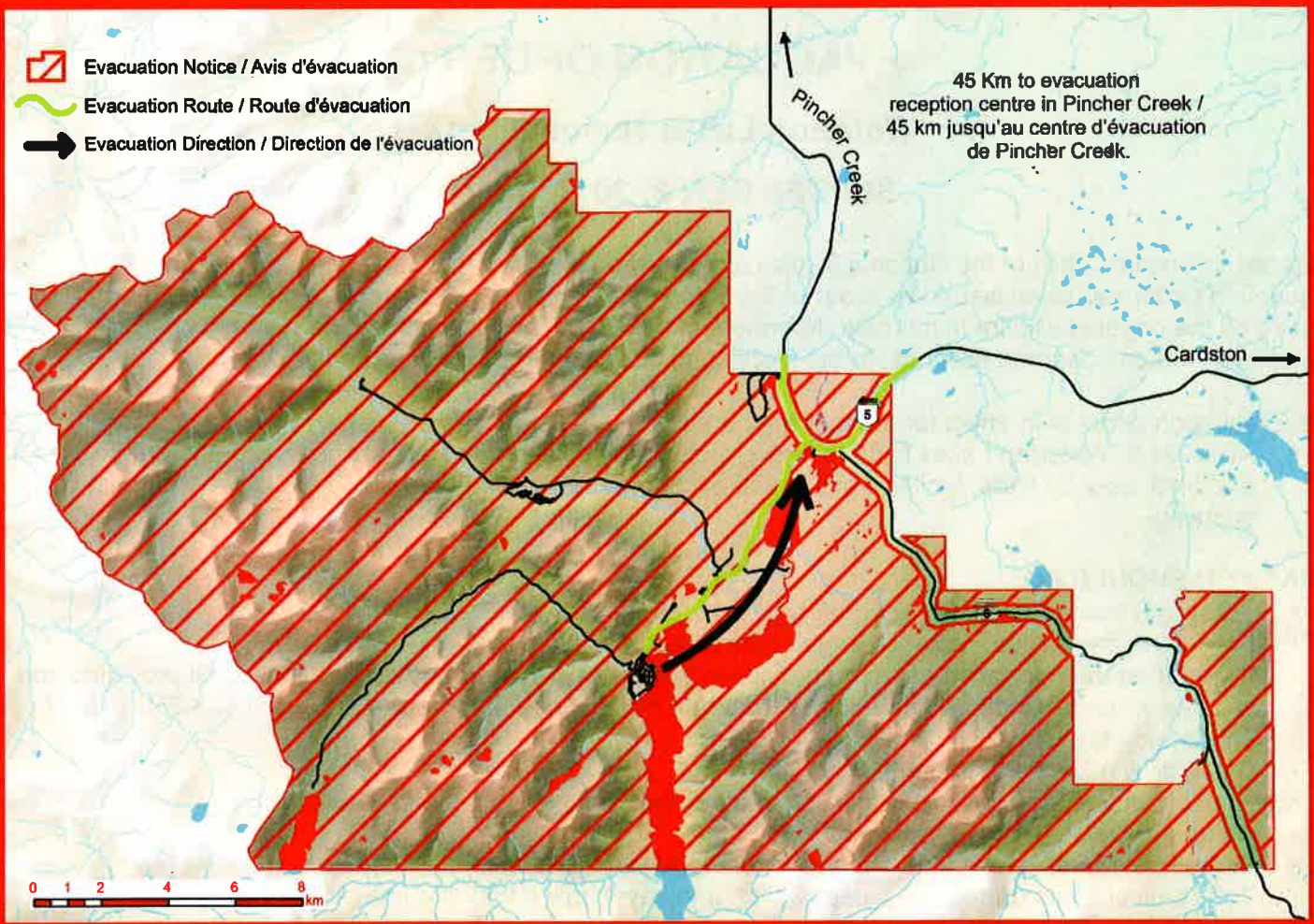
For more details call our Information Line at 403-859-5109.



Ifan Thomas, Field Unit Superintendent
Waterton Lakes National Park, Parks Canada

-  Evacuation Notice / Avis d'évacuation
-  Evacuation Route / Route d'évacuation
-  Evacuation Direction / Direction de l'évacuation

45 Km to evacuation
reception centre in Pincher Creek /
45 km jusqu'au centre d'évacuation
de Pincher Creek.



Parks
Canada

Parcs
Canada

For more information, call the Visitor Information Centre at 403-859-5133.
Pour de plus amples renseignements, veuillez communiquer avec le centre d'information au 403-859-5133.

Canada