

Eleonore Gold Mine Area James Bay Region, Quebec, Canada



Drill hole (D)

- Collar location (Azimut's properties and Cheechoo property)

Drilling results over core lengths (true widths unknown)

Rock samples (Azimut and partners)

- ≥ 1 g/t Au
- 0.1 - 1 g/t Au

Inex Prospect
up to 50.9 g/t Au

Charles Prospect
up to 35.9 g/t Au

Smiley Prospect
4.24 g/t Au / 1 m (D)

OPINACA A
(Azimut / Everton)

OPINACA D
(Azimut)

7.32 g/t Au (soil)

Access road

ELEONORE MINE (Goldcorp)

Surface projection

Proven and probable reserves:
23.44 Mt @ 6.07 g/t Au (4.57 Moz Au)

Measured and indicated resources:
5.14 Mt @ 5.66 g/t Au (0.93 Moz Au)

Inferred resources:
9.73 Mt @ 7.52 g/t Au (2.35 Moz Au)
(as of June 30, 2016)

Cheechoo Property
(Sirios)

Eleonore Property (Goldcorp)

FD Prospect

Moni Prospect
49.18 g/t Au / 4 m (channel)

JT Prospect

OPINACA B
(Azimut / Everton / Hecla Option)

Dominic Prospect

Claude Prospect
0.22 g/t Au / 187 m
incl. 1 g/t Au / 21.5 m (D)

P n lope Prospect
4.26 g/t Au

D8 Prospect
2.3 g/t Au / 1.0 m (channel)
0.55 g/t Au / 4.0 m (channel)

10 km



ELEONORE SOUTH
(Azimut / Goldcorp / Eastmain)

4.9 g/t Au / 45.0 m (Hole ES17-64)

See close-up on Figure 2

Figure 1 - Press release dated May 2, 2017

75°50'W

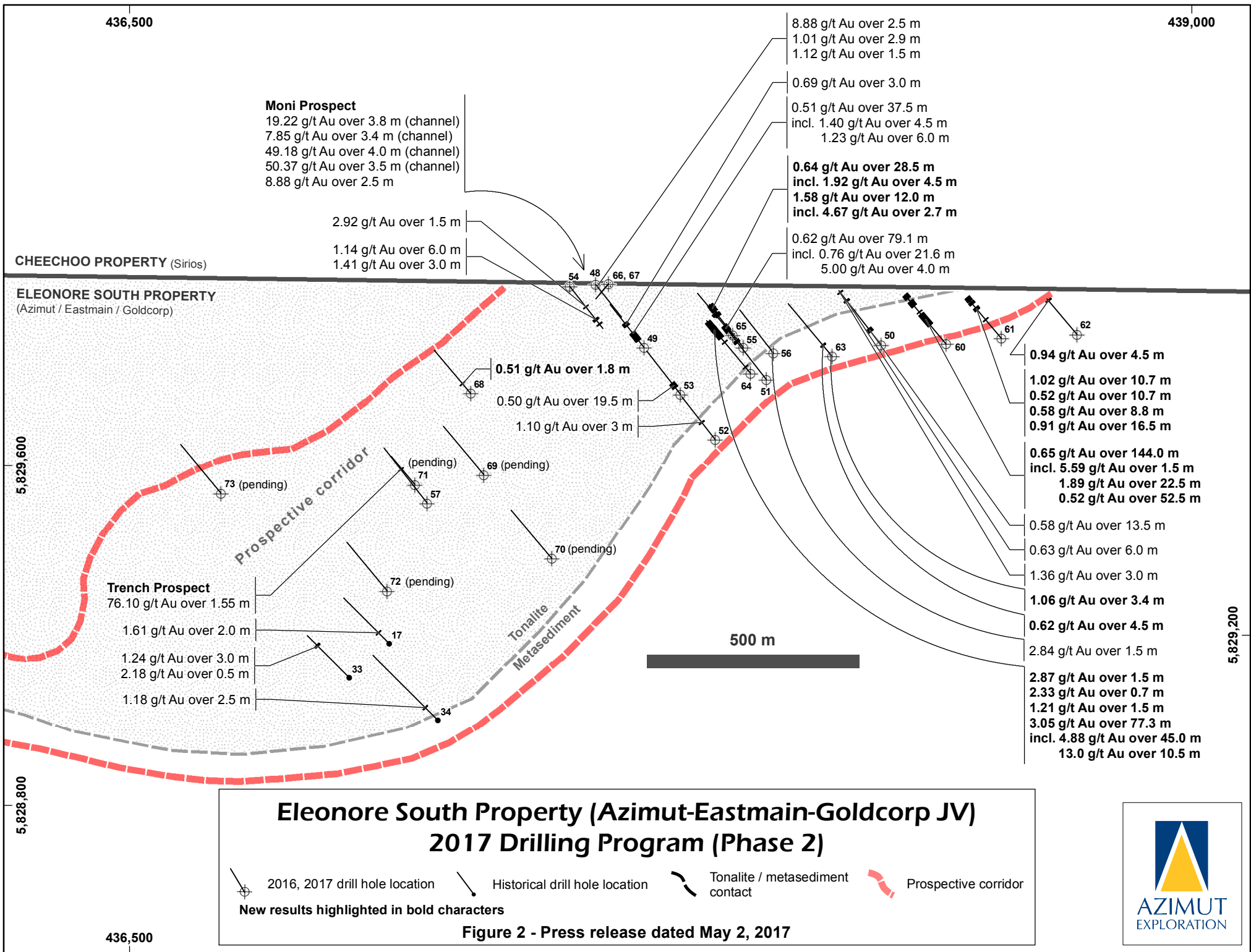
76°20'W

76°30'W

75°40'W

52°45'N

52°45'N



Summary of Drilling Results (Phase 2) Eleonore South Property (Azimut-Eastmain-Goldcorp JV)

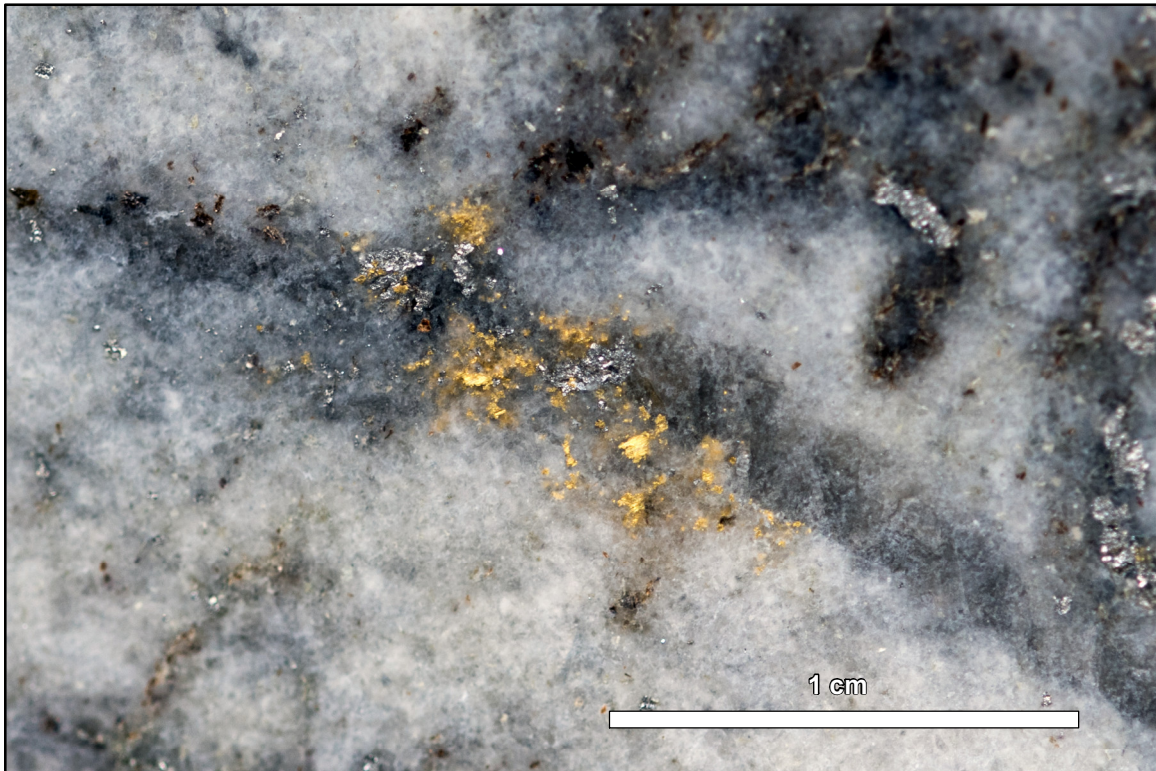
UTM zone 18 - NAD83												
Hole #	Easting	Northing	Azimuth (°)	Inclination (°)	Length (m)	Vertical depth (m)	From (m)	To (m)	L (m)	Au (g/t)		
ES17-60	438,422	5,829,886	320	-49	234	117.3	90.0	234.0	144.0	0.65		
							90.0	94.5	4.5	0.80		
							126.0	139.5	13.5	0.74		
							109.8	151.5	153.0	1.5	5.59	
							142.3	181.5	204.0	22.5	1.89	
							187.5	192.0	4.5	2.61		
							146.6	198.0	199.5	1.5	16.45	
							198.0	204.0	6.0	4.74		
ES17-61	438,552	5,829,899	320	-50	195	68.7	88.3	89.8	1.5	1.02		
							108.7	135.8	146.5	10.7	0.52	
							Including	137.3	138.8	1.5	1.38	
							130.4	164.2	173.0	8.8	0.58	
							Including	164.2	166.7	2.4	1.34	
							144.6	178.5	195.0	16.5	0.91	
							Including	179.0	182.0	3.0	2.00	
							183.3	185.8	2.5	1.08		
190.0	195.0	5.0	1.01									
ES17-62	438,730	5,829,908	320	-50	171	125.4	160.5	164.6	4.1	0.94		
ES17-63	438,154	5,829,857	320	-50	252		5.0	8.4	3.4	1.06		
							Including	5.0	6.5	1.5	2.06	
							49.5	54.0	4.5	0.62		
							229.5	231.0	1.5	0.72		
ES17-64	437,962	5,829,817	320	-50	252	11.4	12.0	13.5	1.5	2.87		
							22.4	28.8	29.5	0.7	2.33	
							106.7	147.0	148.5	1.5	1.21	
							151.7	167.3	244.5	77.3	3.05	
							168.0	183.0	15.0	4.97		
							139.8	168.0	213.0	45.0	4.88	
							180.0	183.0	3.0	15.06		
							Including	153.2	202.5	213.0	10.5	13.00
							204.0	207.0	3.0	37.86		
							228.0	244.5	16.5	0.66		
234.0	238.5	4.5	1.19									
ES17-65	437,920	5,829,906	320	-50	201	78.2	94.5	105.0	10.5	0.60		
							Including	100.5	105.0	4.5	1.10	
ES17-66	437,627	5,830,027	220	-50	72	4.8	1.8	4.7	2.9	1.01		
ES17-67	437,627	5,830,027	220	-70	90	4.9	2.0	3.5	1.5	1.12		
ES17-68	437,303	5,829,769	320	-50	207	33.4	46.0	47.8	1.8	0.51		

Reported intervals are along core length and may not represent the true width of intervals. Uncut gold grades. Vertical depth is measured from the surface to the mid-point of the reported interval.

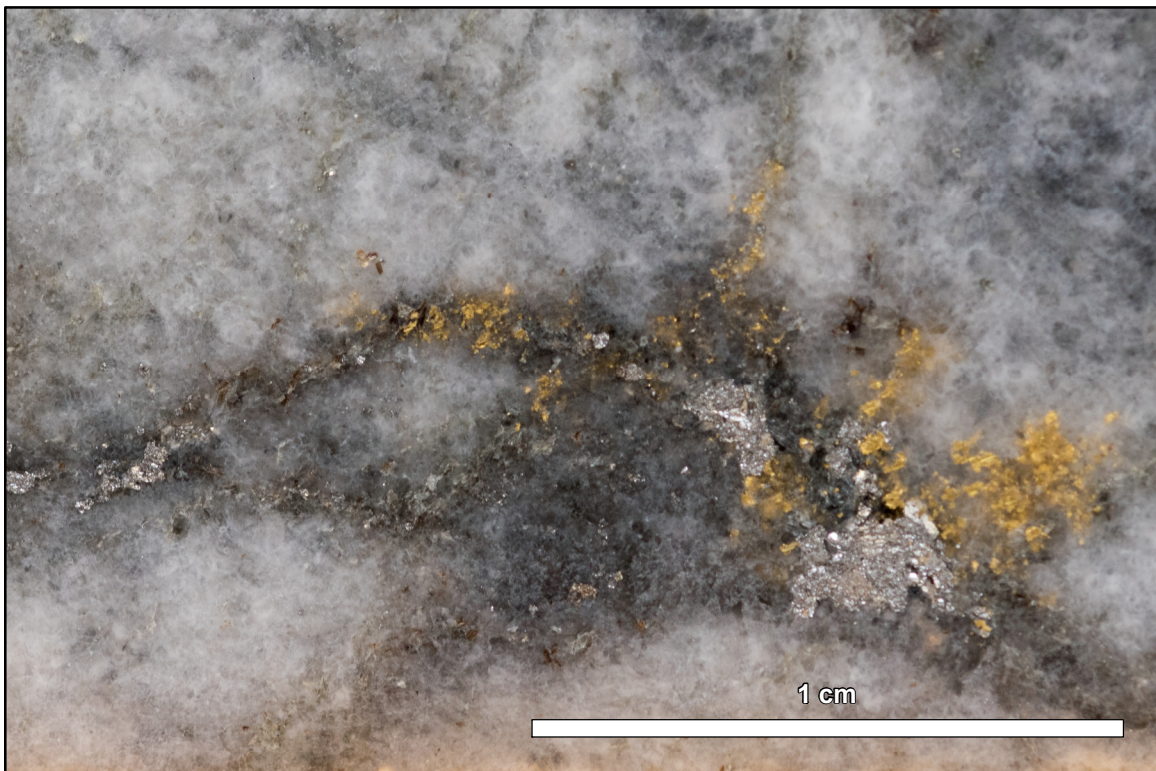
Table 1 - Press release dated May 2, 2017



**Eleonore South Property
(Azimut-Eastmain-Goldcorp JV)**



Hole ES17-64: Native gold with arsenopyrite. Core sample at - 204.65 m downhole.



Hole ES17-64: Native gold with arsenopyrite. Core sample at - 204.2 m downhole.