

inturaiTM

CSE:PPB OTC:PPBGF FSE:3QG

See Beyond the Visible
Welcome to the future of tactical intelligence.



⌋

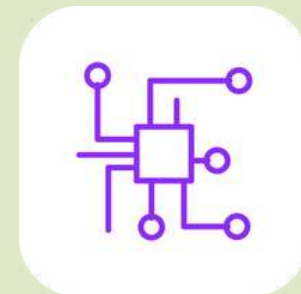
stealthwave

A New Class Of Sensor

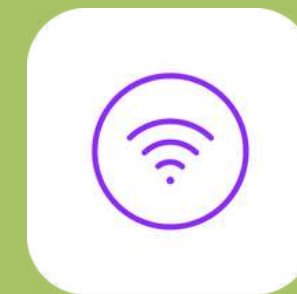
Stealthwave transforms radio signals into battlefield intelligence through proprietary AI models, seeing through walls, tracking targets and enhancing situational awareness in real-time.



Key Benefits:



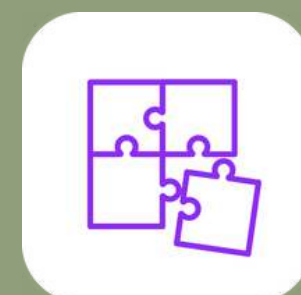
Device and Form Factor Agnostic



Human Presence, Movement Monitoring and BLE, Wifi, IMEI and IMSI Capture



Scalable from single units to large deployments

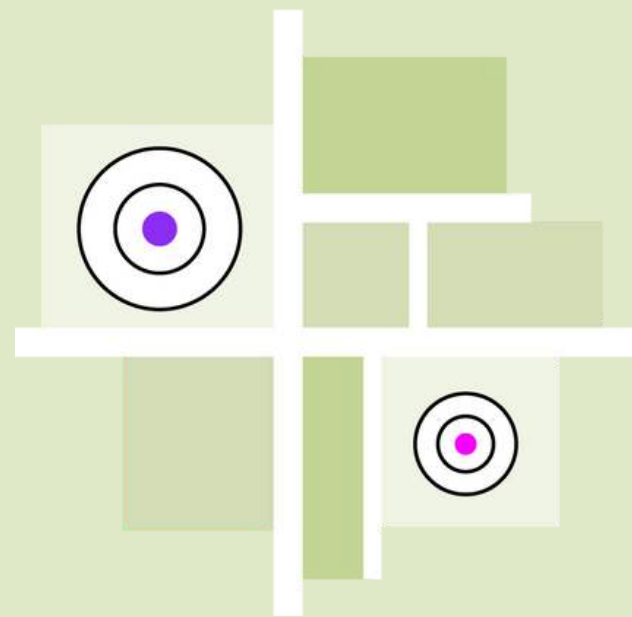


Integrates with drones, ATAK, Operator-worn, Dog or Robot-worn and much more.

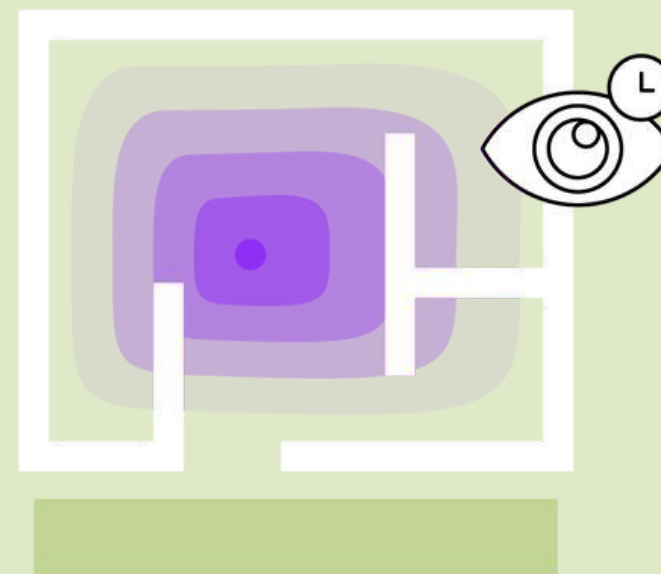
Advanced Technology For Tactical Superiority

- Provides a reliable range in complex environments.
- Down to the meter accuracy.
- Works on drones, in fixed locations, or as portable units.
- Easy to integrate.

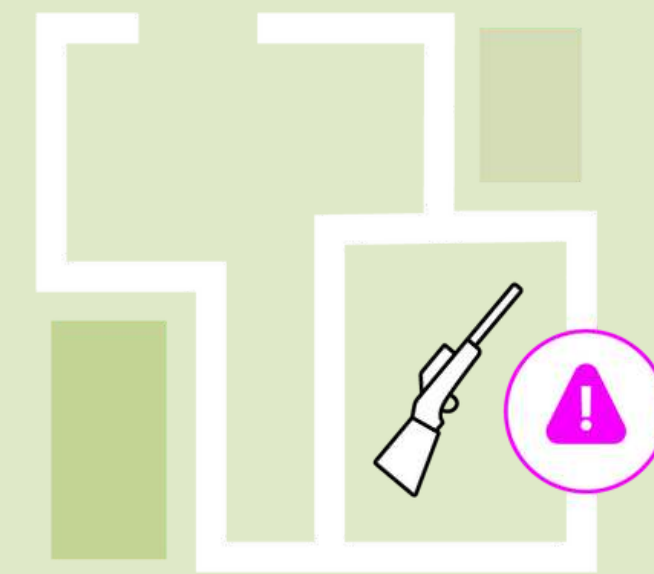
Key Features:



Penetrates dense materials with precision for location or human body presence



Provides real-time, actionable data



Enhances situational awareness in high-stakes scenarios

C

USE CASE DEMO

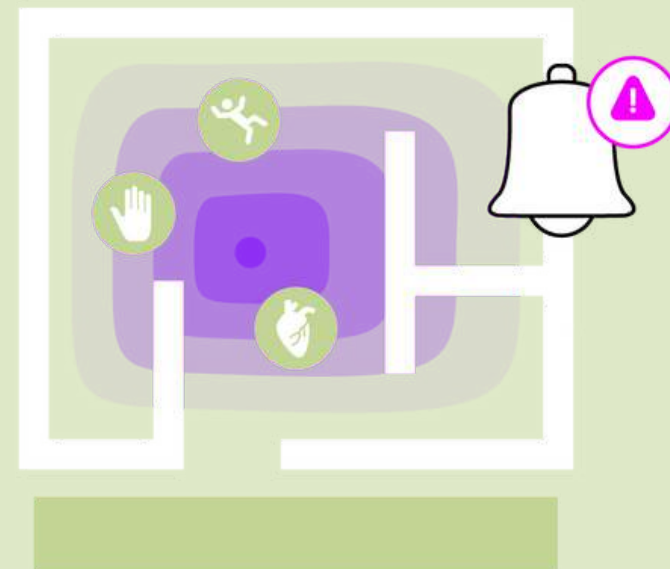
See what Cameras and Infrared can't.

Transforms blind spots into clear visuals.

Highlights:

Example:

In a field operation, StealthWave can enable a team to visualise adversary movements inside a building, ensuring mission success without casualties.



stealthwave




Targets Found

STG_2.4G
vivo Y21T
Aiconk, NMMSEEN yrJet Pro MFP HP Smart Tank 660-670
'WHOO' v1 E06489843E4B53FB
Cafe IoT @Airtel Airtel_Laps_9004
AccessPoint ITS_Hardware

stealthwave

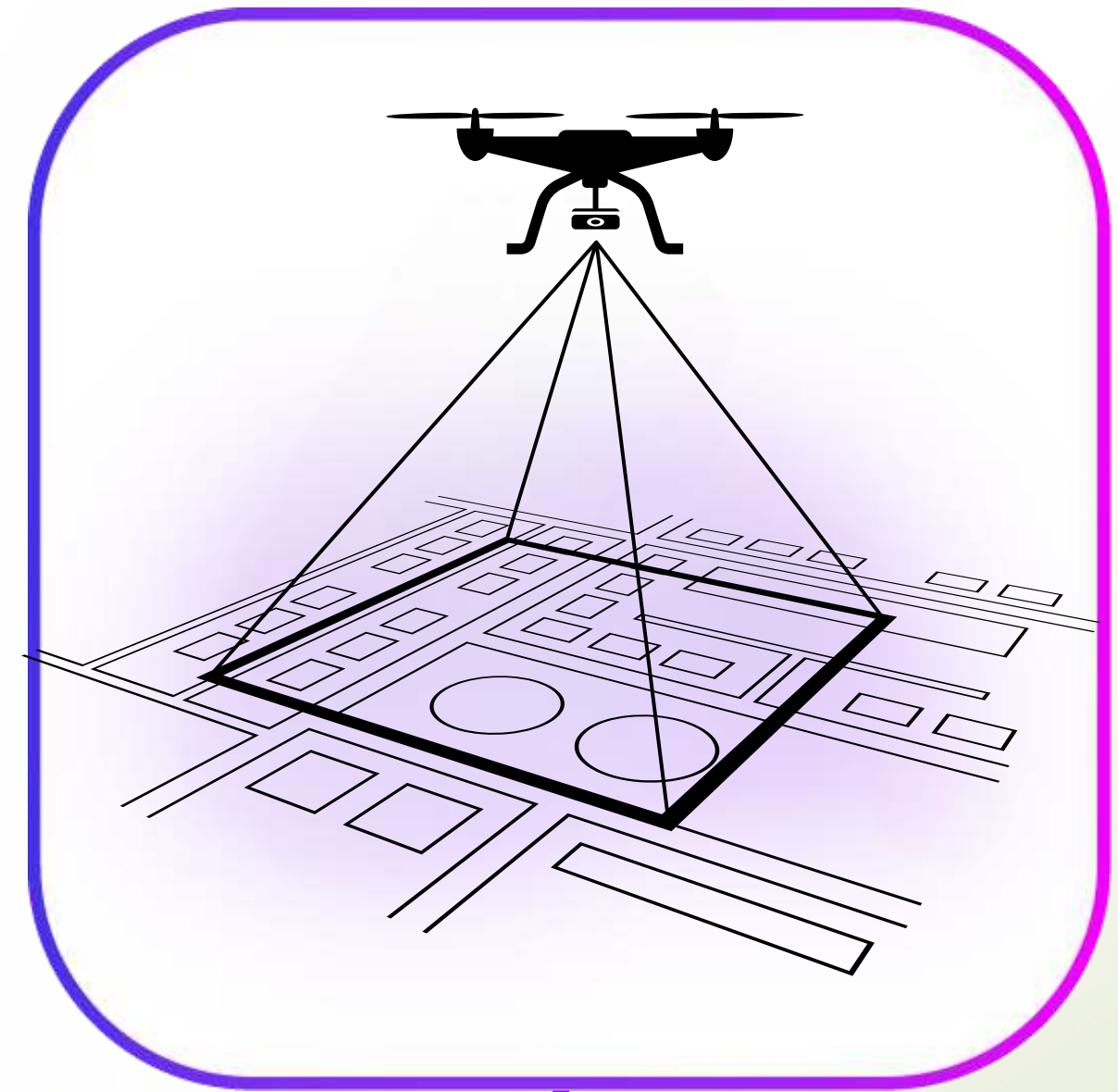
Precision Find, Target & Track

StealthWave offers the unique capability of locating and tracking individuals even in urban environments.



Use Case:

Operator, Drone or K9 Carriers HumanRadar, finding Human Presence where other sensors can't.



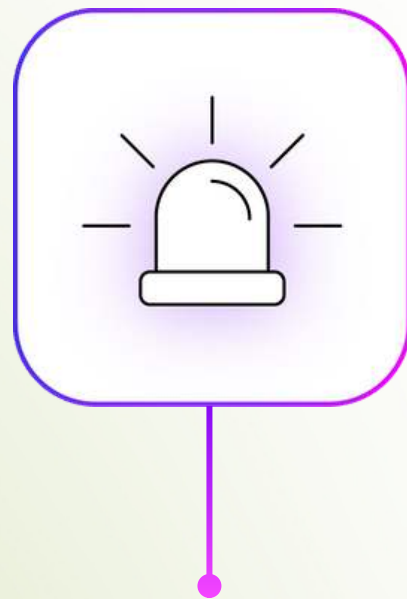
Use Case:

During a critical operation, operators can search and pinpoint the exact location of a high-value target using StealthWave's tracking, enabling strong information gathering and mission success.

Value Beyond Field Operations

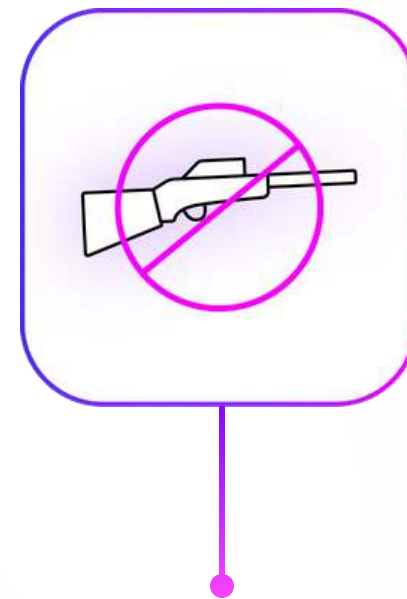
StealthWave is designed for the military, law enforcement and private security sectors. It can be instrumental in operations requiring heightened situational awareness and precision decision-making.

Applications:



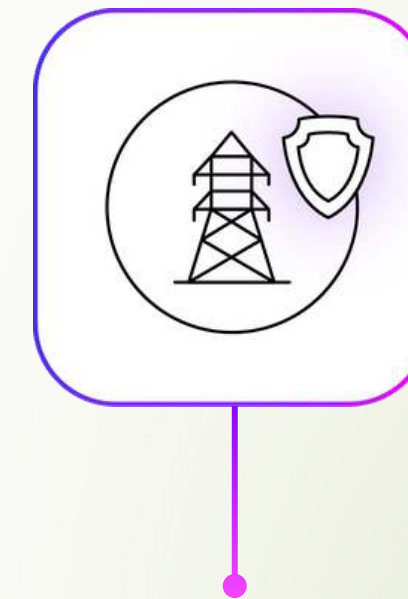
Border security:

Detecting unauthorised movements across restricted zones.



Intelligence & Counter-terrorism:

Identifying and neutralising threats in urban environments.



Safehouse and Special Operations:

Monitoring sensitive sites for unauthorised access.

Optimised for Critical Scenarios

StealthWave is designed to excel in the most demanding tactical environments. Whether it's urban combat or delicate hostage situations, StealthWave helps operators navigate the unfamiliar structure and ensure rapid, coordinated intervention.



Key Advantages:

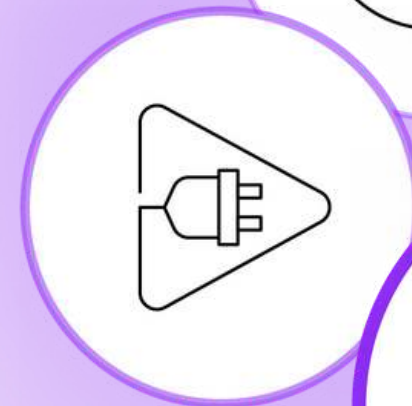
- 
Mobility
Lightweight and deployable in-field
- 
Stealth
Operates discreetly without revealing the operator's position
- 
Real-time data
Provides actionable intelligence to teams on the ground

Tailored Solutions for Unique Challenges

Inturai offers bespoke configurations of StealthWave to meet the specific requirements of clients. From design to deployment, we ensure seamless integration with your existing systems and operational needs.

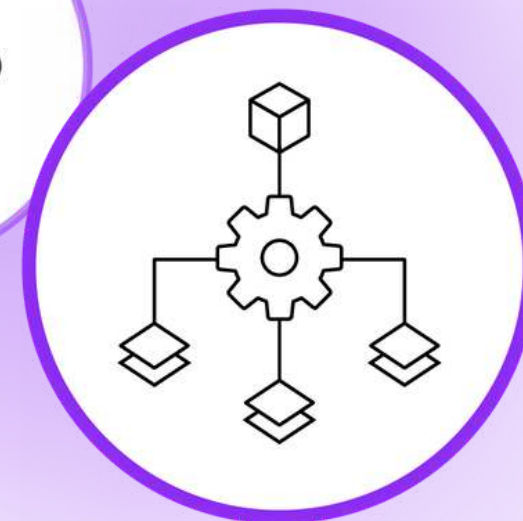
Customisation Options:

System integration:
Works with current hardware and software ecosystems.



Form factors:

Portable, vehicle-mounted, or fixed installations.



Feature flexibility:

Adapt functionalities to meet mission-critical demands.

The New Sensor In Tactical Intelligence

Inaturai StealthWave represents the latest in spatial intelligence technology. Contact us to schedule a demo or discuss how Inturai can support your mission needs.

inturaiTM

CSE:PPB OTC:PPBGF FSE:3QG



Contact:
investor@p2p-group.com