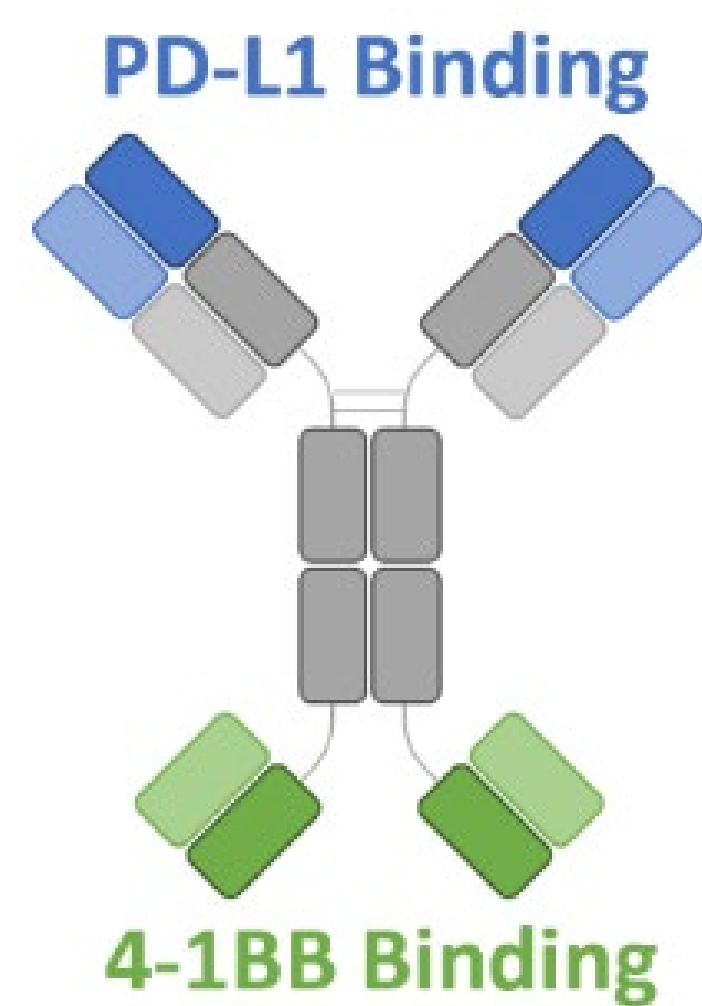


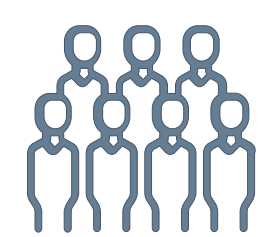
Abstract #2534: A Phase 1, Dose Escalation/Dose-expansion Study of QLF31907, a Bispecific Antibody Targeting PD-L1 and 4-1BB, in Patients with Advanced Solid Tumors and Lymphoma

1 Antibody Structure

QLF31907



2 Study Design



Participants: Patients with histologically confirmed solid tumors or relapsed/refractory (r/r) lymphoma who failed or were intolerable to standard therapy.

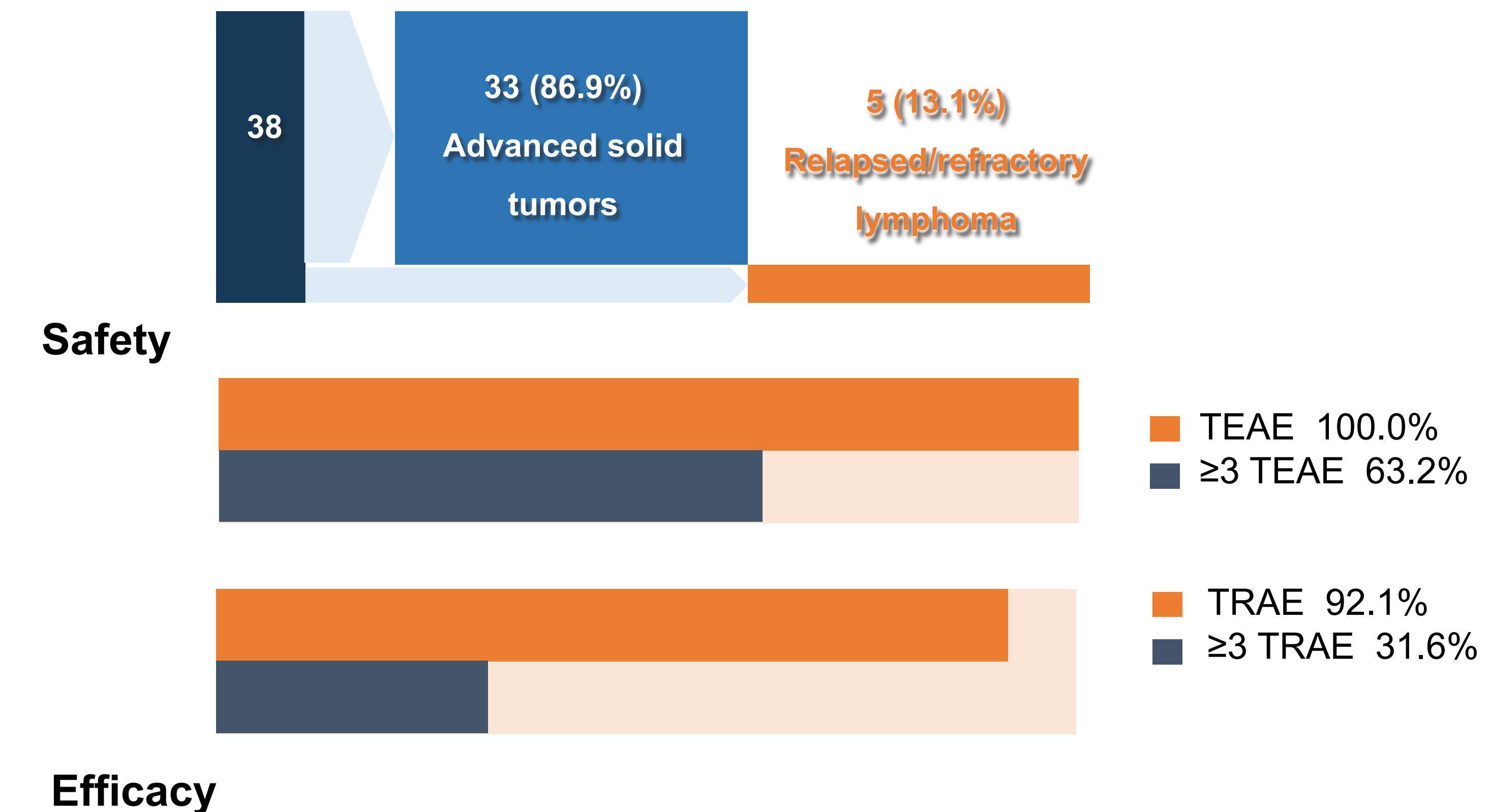


Intervention: QLF31907 intravenously every two weeks (Q2W):

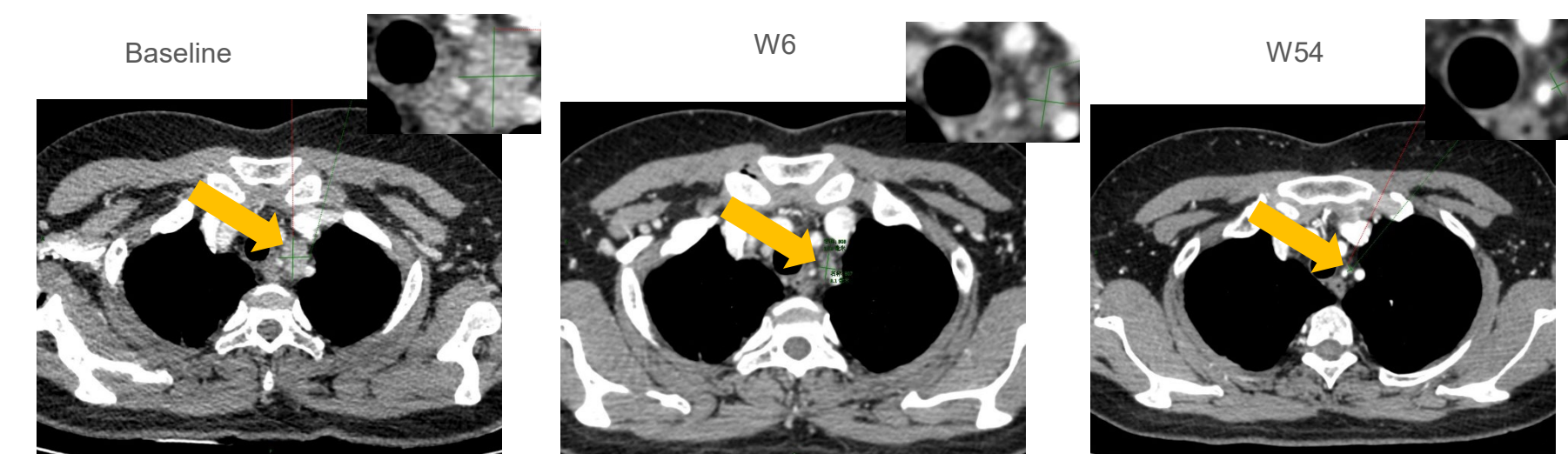
- Dose-escalation: 0.026- 30 mg/kg (“accelerated titration”+ “i3+3” design).
- Dose-expansion: 10 mg/kg and 20 mg/kg Q2W.

3 Results (Data as of April 18, 2024)

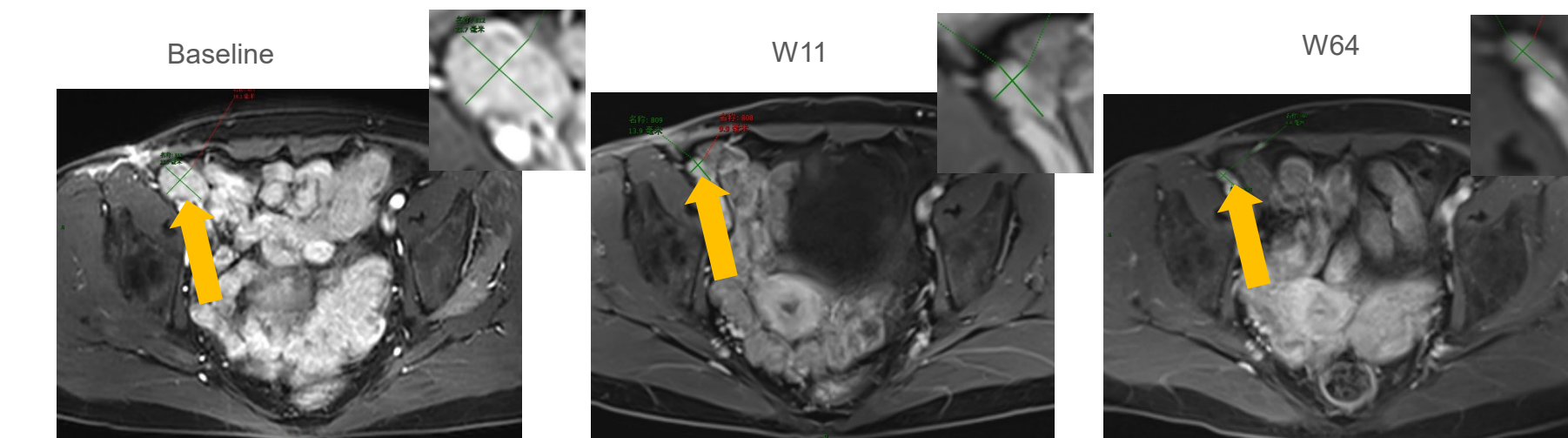
Enrollment: 38 patients from 5 centers



Case 1: A 49-year-old PD-1/PD-L1 naïve cervical cancer patient, with a PR > 20 months and is still on treatment.



Case 2: A PD-1/PD-L1 treated melanoma patient, with a PR>15 months and is still on treatment.



4 Conclusion

In heavily pretreated patients with advanced solid tumors and lymphomas, QLF31907 showed preliminary efficacy and safety. QLF31907 also demonstrated a therapeutic response in patients who had failed PD-1/PD-L1 therapy, and further research on the related mechanisms will be conducted.