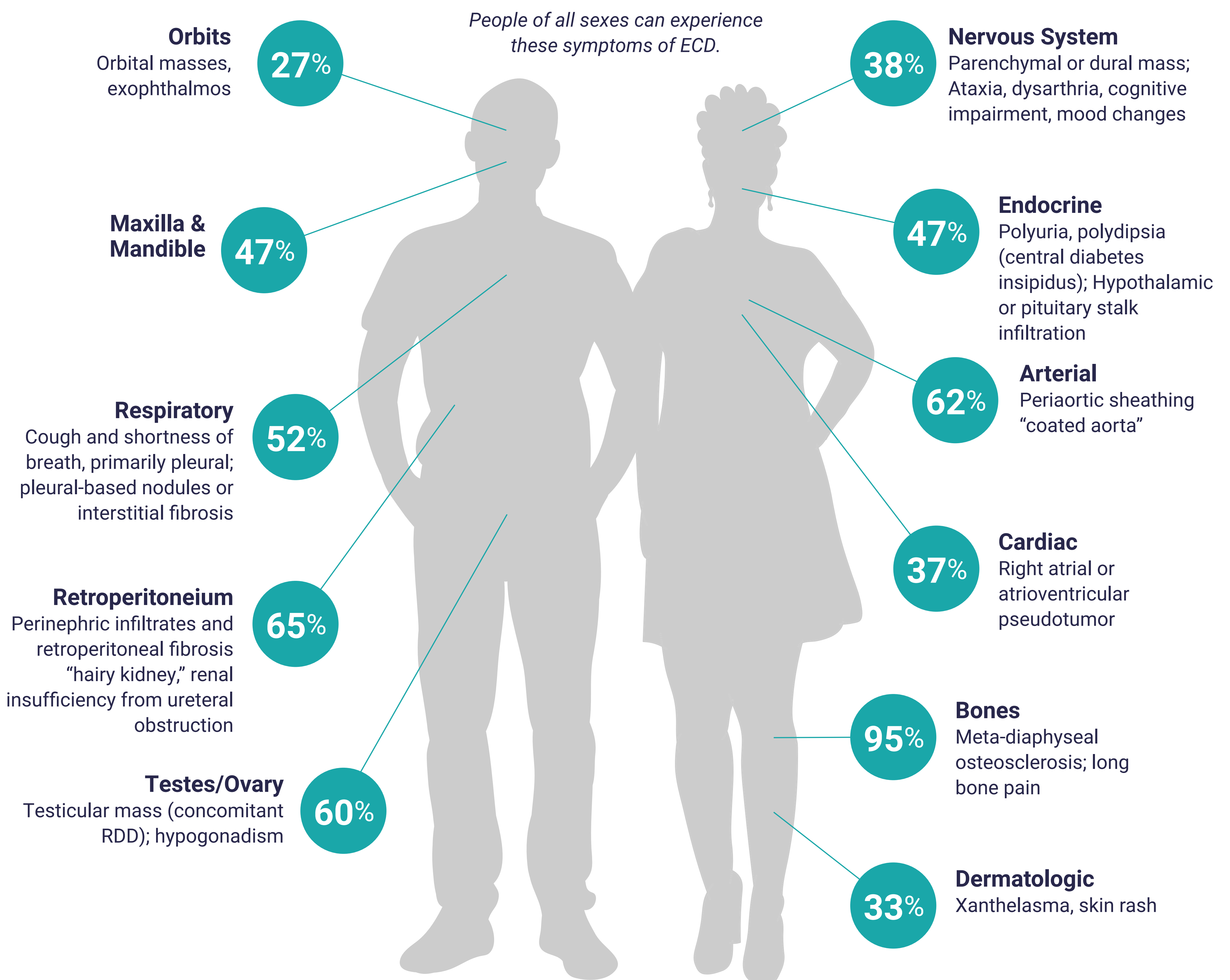


HOW PEOPLE EXPERIENCE ERDHEIM-CHESTER DISEASE (ECD)

ECD predominantly affects adults, and is slightly more common in men than women.



The above diagram shows the percentage of ECD patient who experienced issues associated with each of the listed organs as reported in a 2020 publication. These numbers have been compiled using multiple existing studies. The illustration depicts clinical and radiographic features with frequencies and descriptions.



www.erdheim-chester.org