

newline



Leverage the Power of Generative AI



Integrated with the Q & Q Pro



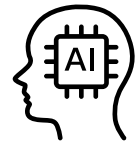
LLM Sourced from Vetted Content



Control With Your Voice



Private, Safe & Secure



Like having your own AI assistant

DISCOVER THE MAGIC OF NEWLINE + MERLYN AI

With the power of Merlyn AI, Newline's interactive panels are easier to use than ever! The Newline Q and Q Pro Series interactive panels with Merlyn AI allows teachers to leverage the power of generative AI during active instruction, delivering text and images that increase student engagement, reward curiosity, and encourages higher-order thinking.

Built on the first large language model designed specifically for education, Merlyn AI generates content from educational resources and shows attribution to source material. Using natural language voice commands, teachers can access all of the Newline features they know and love from anywhere in their classroom.

Teachers are expected to juggle all the apps and devices in their classroom while at the same time creating an engaging learning environment. Merlyn's voice control of technology is like an AI superpower, freeing teachers from their devices and allowing them to focus on their students.

newline

950 W Bethany Drive, Suite 330
Allen, TX 75013

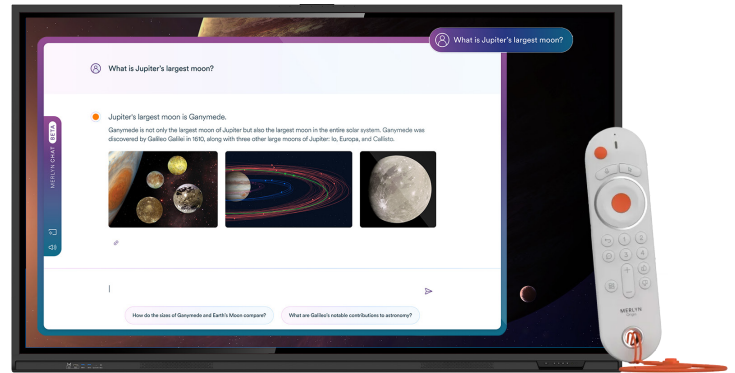
Toll-Free: 888-233-0868
Local: 972-468-9728

sales@newline-interactive.com
www.newline-interactive.com

Newline with Merlyn AI is here, and teaching will never be the same.

AI for Education, the right way

- Leverage the power of Merlyn's generative AI during active instruction to deliver text and images that rewards student curiosity and makes kids excited about learning.
- Merlyn AI is built on the first LLM designed specifically for the classroom, so you can be confident content is pulled from vetted educational content and resources, not off the internet.
- Merlyn AI is designed to show attribution to source material and prioritizes low hallucinations—it won't provide false or made-up information.
- Teachers also receive suggestions for follow-up questions so they can dive deeper with their students.
- Merlyn AI is safe, secure and private, and does not sell personal information, retain voice audio after processing, or use voice audio to identify individuals.



Control your Newline panel with the power of your voice

Using the power of Merlyn AI and natural language voice commands, teachers can access all of the Newline features they know and love from anywhere in their classroom:

- Whiteboard
- Annotations
- Screenshot
- Control built-in browser
- Switch between displays
- Open/close panel apps
- Create timers
- Clock
- Weather
- Enable/disable touch
- Brightness/backlight
- Control volume
- And more!

With voice control, tech disappears into the background, so you can keep your focus on teaching.

Merlyn AI integration featured on the following Newline interactive panels:



Newline Q Pro Series

- Google EDLA Certified
- Android 13 OS with User Profiles
- USB Type C with 65W Power support
- Camera Module Capable
- Enhanced Network Capability with Wi-Fi 6
- 20 Watt Speakers for enhanced sound
- Up to 40 Points of Touch with Object Recognition
- Sizes: 55", 65", 75", 86", 98"



Newline Q Series

- Upgradable Android 13 OS
- Enhanced UI with User Profiles
- USB Type C with 65W Power support
- Camera Module Capable
- Enhanced Network Capability with Wi-Fi 6
- 20 Watt Speakers for enhanced sound
- IR Touch Technology with Object Recognition
- Sizes: 55", 65", 75", 86", 98"