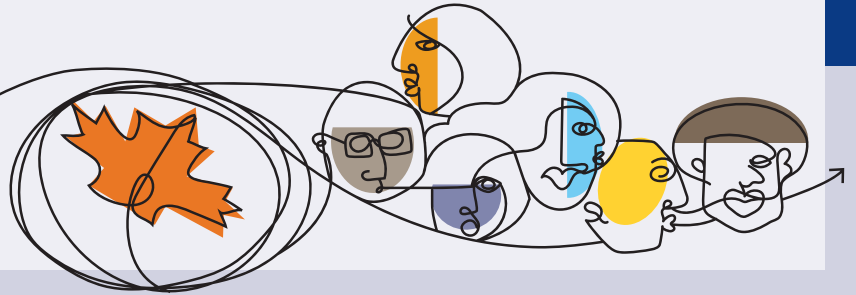


The Many Faces of Dementia in Canada

People living with dementia are as diverse as the different diseases and conditions that cause brain disorders.



WHAT IS DEMENTIA ?

The term “dementia” doesn't actually refer to one, specific disease. Rather, it's an overall term for a set of symptoms that are caused by disorders affecting the brain.

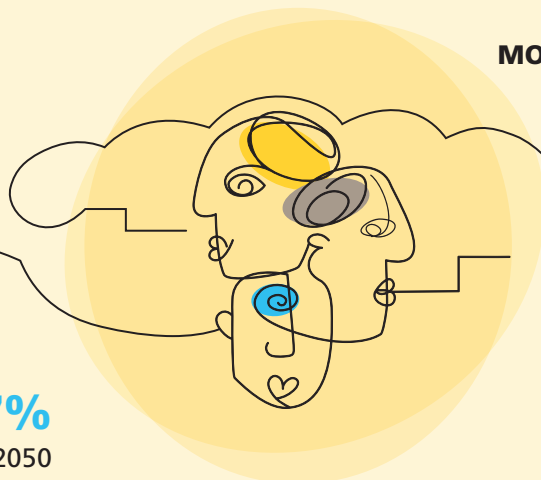
The Landmark Study: The Many Faces of Dementia in Canada is the second of three reports by the Alzheimer Society of Canada, and this series details demographic, social and economic impacts of dementia.

DID YOU KNOW?

MORE THAN 650,000 people are currently living with dementia in Canada

MORE THAN 50 different diseases or conditions can cause dementia

The number of **people living with dementia** in Canada is expected to **INCREASE BY 187%** from 2020 to 2050



MORE THAN 1.7 million people are likely to be living with dementia by **2050**

BY THE NUMBERS

The number of **INDIGENOUS PEOPLE** living with dementia in Canada is predicted to surpass **40,300** by 2050

A 273% INCREASE



By 2050, **1 in 4** people who develop dementia in Canada will likely be of **ASIAN ANCESTRY**

A 785% INCREASE



The number of people of **AFRICAN ANCESTRY** living with dementia in Canada is predicted to surpass **29,100** by 2050

A 507% INCREASE



The number of people of **LATIN, CENTRAL AND SOUTH AMERICAN ANCESTRY** living with dementia in Canada is predicted to surpass **18,500** by 2050

A 434% INCREASE



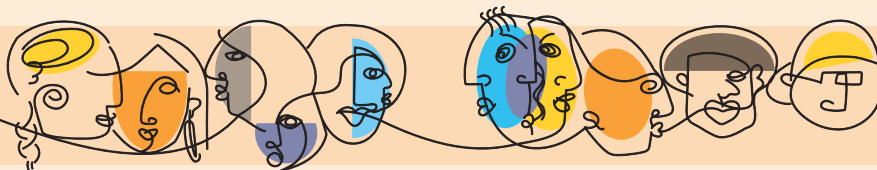
In 2020, an estimated **61.8%** of people living with dementia in Canada were **FEMALE**



BY 2050, projections show that over **1 million** women will be living with dementia in Canada

YOUNG ONSET DEMENTIA presents distinct challenges, which often lead to **delayed diagnoses and difficulty** in obtaining workplace accommodations

BY 2050, there could be over **40,000** people **UNDER THE AGE OF 65** living with dementia in Canada – an increase from an estimated 28,000 in 2020



The Landmark Study is a microsimulation study developed by the Alzheimer Society of Canada to better understand dementia nationally over the next 30 years. This includes projections related to Indigeneity, ethnic origin, sex (gender data was not available to be included in the model), and age in regards to dementia. There is no national tracking system for actual dementia cases, so all numbers shown rely on informed estimates and data modelling.

Read the full report, *The Many Faces of Dementia*, here: [Alzheimer.ca/ManyFaces](https://www.alzheimer.ca/ManyFaces)