





**Alpha Motor Corporation (Alpha) is an award-winning American automobile company focused on manufacturing mobility solutions that Move Humanity®.**

**We innovate sustainable transportation for the wellness of people and our environment by implementing advanced automotive technologies and disruptive industrial practices.**

**Based in Irvine, California, Alpha is committed to creating the kinds of electric vehicles we believe the world has always wanted to see but that have not existed – until now.**

**Experience the Wolf and Wolf Plus Electric Trucks at the Seoul Mobility Show (Hall 4, EC-1).**

\*Not exhaustive. Information is provided for illustrative purposes only.

Learn more at [www.alphamotorinc.com](http://www.alphamotorinc.com).

**Alpha Motor Corporation**  
9551 Irvine Center Drive, Irvine, CA 92618  
[www.alphamotorinc.com](http://www.alphamotorinc.com)

Email: [contact@alphamotorinc.com](mailto:contact@alphamotorinc.com) | Phone: +1 949 393 0548 | Instagram: @alphamotorinc







## WOLF PLUS (Extended Cabin Truck)



## WOLF (Single Cabin Truck)

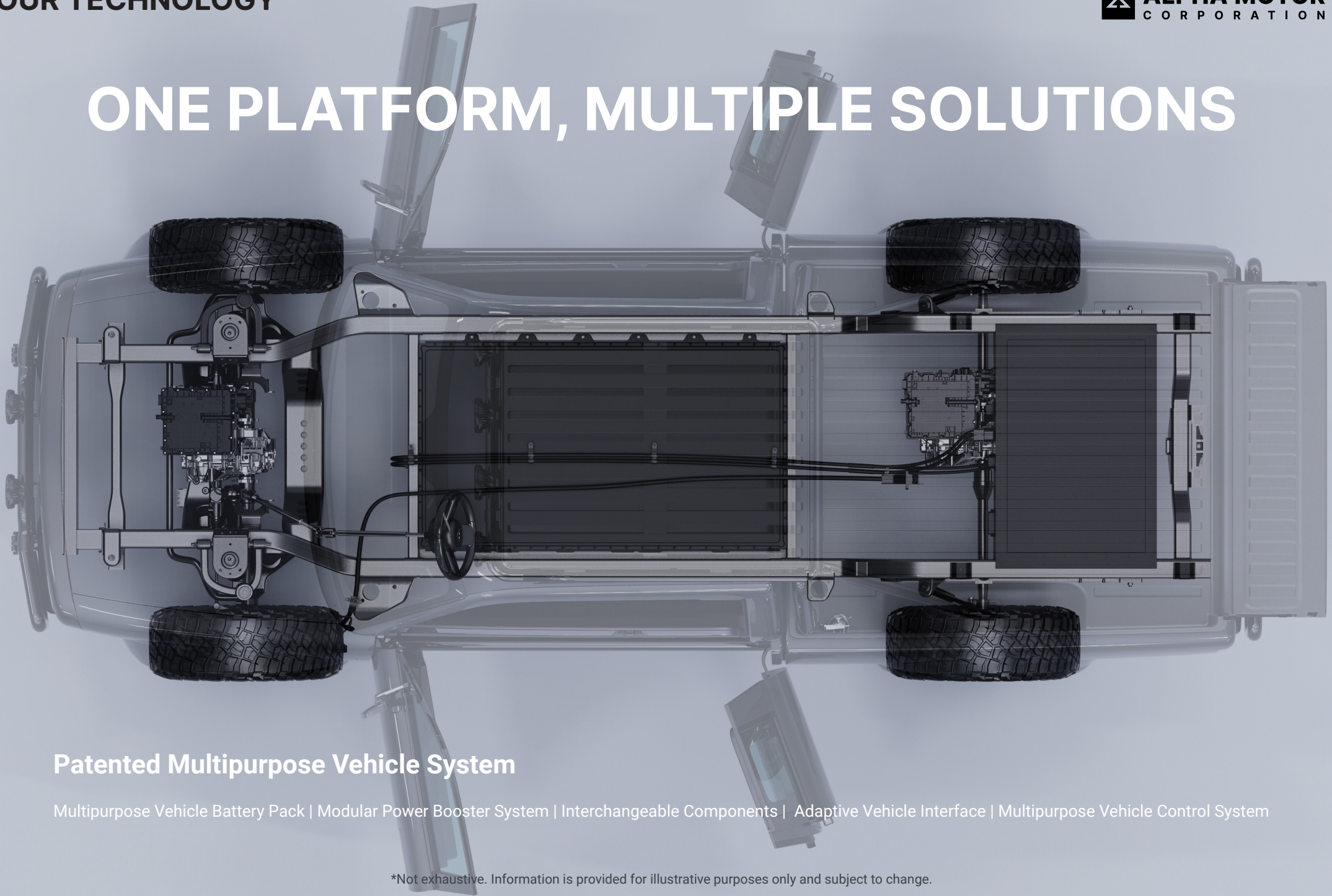
|                     |  |
|---------------------|--|
| Country of Origin   | United States                                    |
| Body Type           | Truck - 2 + 2 Rear Access Doors with Load Bed    |
| Seating             | Double Row (Driver, 3 Passengers)                |
| Power               | 400V - 600V Battery Electric                     |
| Range (km)          | 450 - 482+                                       |
| Drive Configuration | Single Motor RWD / Dual Motor AWD                |
| Brakes              | Regenerative / Disc                              |
| Suspension          | Independent Front Suspension / Rear Leaf Springs |
| Motor               | PMSM Single Speed Direct Drive                   |
| Battery             | Lithium-Ion NMC                                  |
| Dimensions (mm)     | 5287 x 1900 x 1765 (L x W x H)                   |
| Tire Size           | 265/70 R16 (Base)                                |
| Load Bed Size (mm)  | 1652 x 1490 x 450 (L x W x H)                    |
| Weight (kg)         | 2,040 - 2,177                                    |

|                     |  |
|---------------------|--|
| Country of Origin   | United States                                    |
| Body Type           | Truck - 2 Door Cabin with Load Bed               |
| Seating             | Single Row (Driver, Passenger)                   |
| Power               | 400V - 600V Battery Electric                     |
| Range (km)          | 400 - 450+                                       |
| Drive Configuration | Single Motor RWD / Dual Motor AWD                |
| Brakes              | Regenerative / Disc                              |
| Suspension          | Independent Front Suspension / Rear Leaf Springs |
| Motor               | PMSM Single Speed Direct Drive                   |
| Battery             | Lithium-Ion NMC                                  |
| Dimensions (mm)     | 4828 x 1900 x 1765 (L x W x H)                   |
| Tire Size           | 265/70 R16 (Base)                                |
| Load Bed Size (mm)  | 1652 x 1490 x 450 (L x W x H)                    |
| Weight (kg)         | 1,800 - 1,950                                    |

\*Not exhaustive. Information is provided for illustrative purposes only and subject to change.



# ONE PLATFORM, MULTIPLE SOLUTIONS



## Patented Multipurpose Vehicle System

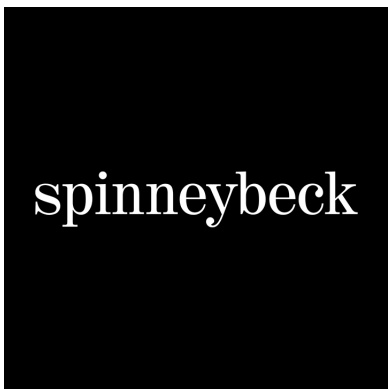
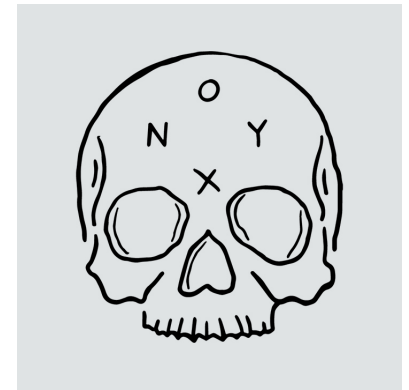
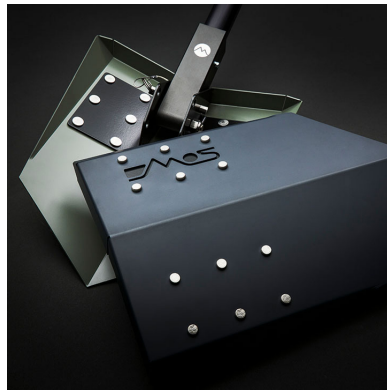
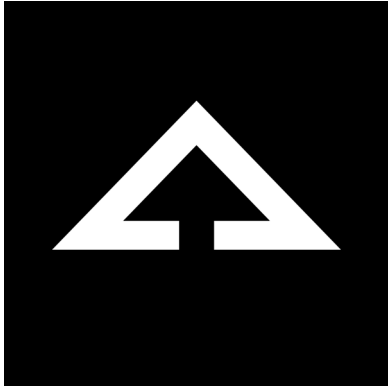
Multipurpose Vehicle Battery Pack | Modular Power Booster System | Interchangeable Components | Adaptive Vehicle Interface | Multipurpose Vehicle Control System

\*Not exhaustive. Information is provided for illustrative purposes only and subject to change.

**Move**  
**HUMANITY®**

[www.alphamotorinc.com](http://www.alphamotorinc.com)

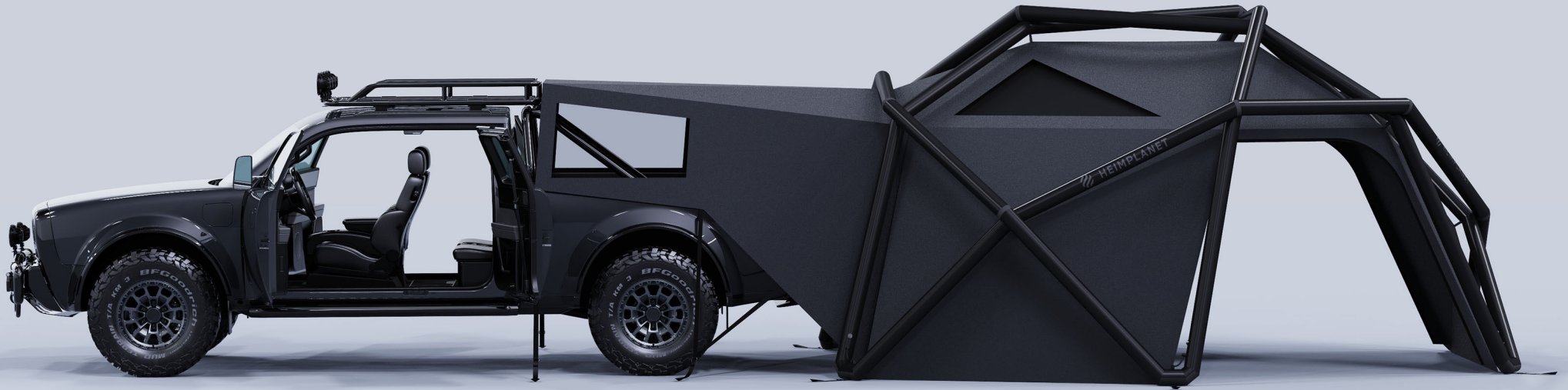
# ALPHA CAMP COLLABORATORS



Visit [www.alphamotorinc.com/camp2023](http://www.alphamotorinc.com/camp2023) for more information.

**BUILT FOR ADVENTURES**

**ALPHA MOTOR**  
CORPORATION





**COMFORT AND CONNECTIVITY**



\*Not exhaustive. Information is provided for illustrative purposes only and subject to change.

Copyright © 2023 Alpha Motor Corporation. All rights reserved.



**ADVENTURE READY LIGHTING**

**ALPHA MOTOR**  
CORPORATION



