



**KINCORA**  
**COPPER**

# **Annual General and Special Meeting**

*Hybrid meeting with webcast*

**ASX & TSXV: KCC**

***Tuesday, 14 December 2021***

# Cautionary Statement

Certain disclosure may constitute "forward-looking statements". In making the forward-looking statements, the Company has applied certain factors and assumptions that the Company believes are reasonable. However, the forward-looking statements are subject to numerous risks, uncertainties and other factors that may cause future results to differ materially from those expressed or implied in such forward-looking statements. Such uncertainties and risks are described from time to time in the Company's filings with the appropriate securities commissions, and may include, among others, market conditions, delays in obtaining or failure to obtain required regulatory approvals or financing, fluctuating metal prices, the possibility of project cost overruns, mechanical failure, unavailability of parts and supplies, labour disturbances, interruption in transportation or utilities, adverse weather conditions, and unanticipated costs and expenses, variations in the cost of energy or materials or supplies or environmental impacts on operations. There can be no assurance that such statements will prove to be accurate, and actual results and future events could differ materially from those anticipated in such statements. Readers are cautioned not to place undue reliance on forward-looking statements. The Company does not intend, and expressly disclaims any intention or obligation to, update or revise any forward-looking statements whether as a result of new information, future events or otherwise, except as required by law.

Qualified Person: The scientific and technical information in this presentation was prepared in accordance with the standards of the Canadian Institute of Mining, Metallurgy and Petroleum and National Instrument 43-101 – Standards of Disclosure for Mineral Projects ("NI 43-101") and was reviewed, verified and compiled by Kinco's staff under the supervision of Paul Cromie (BSc Hons, M Economic Geology, PhD Geology, AusIMM), Exploration Manager – Australia, who is a Qualified Person for the purpose of NI 43-101.

JORC Competent person statement: Information in this presentation that relates to Exploration Results, Mineral Resources or Ore Reserves has been reviewed and approved by Mr. Paul Cromie, who is a Qualified Person under the definition established by JORC and has sufficient experience which is relevant to the style of mineralization and type of deposit under consideration and to the activity being undertaking to qualify as a Competent Person as defined in the 2012 Edition of the 'Australasian Code for Reporting of Exploration Results, Mineral Resources and Ore Reserves'. Mr. Paul Cromie consents to the inclusion in this report of the matters based on his information in the form and context in which it appears.

# Opening of Meeting



# Director Introductions

---



## In Trundle

---



**Cameron McRae**

Independent Chairman  
Remuneration Committee



**John Holliday**

Independent Non-Executive  
Director, Technical/Committee  
Chair



**Sam Spring**

President & CEO, Director  
Technical and Audit  
Committees



**Lewis Marks**

Non-Executive Director  
Audit Committee



**Ray Nadarajah**

Independent Non-Executive Director  
Chair of Remuneration and Audit  
Committees

# ***Meeting Agenda***

---



- ***Chairman's Address***
- ***CEO's Presentation***
- ***Formal Business – 8 Resolutions***
- ***Q&A***

# Chairman's Address



# CEO's Presentation



Left to Right: Baggy, John, Sam McRae & Paul at the Trundle core yard



Crop before harvest at Trundle Park prospect, Trundle, NSW



# Location: "The place to be"

“ As an economic geologist ... NSW, Lachlan Fold Belt, for copper and gold, is the place to be ”

- Richard Schodde, MinEx Consulting

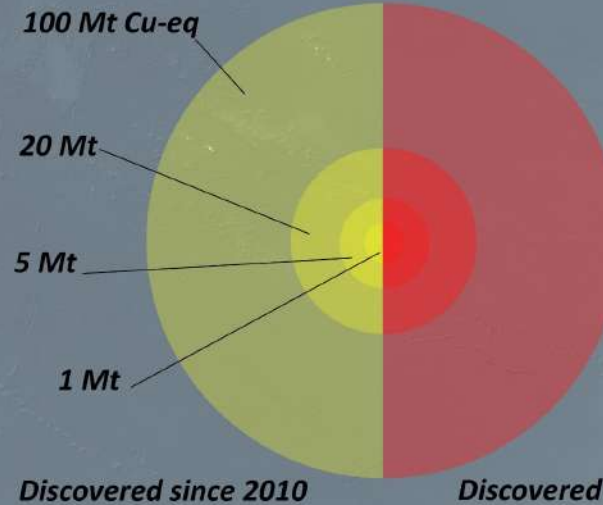
Indonesia & PNG

Pilbara

Lachlan Fold Belt

Alaska/Yukon

Ecuador & Columbia



All gold-rich copper deposits in the World, highlighting those found in the last decade ... and the 5 current hot spots for exploration

Gold-Rich Copper Deposits (ie where Au accounts for at least 20% of the in-situ value)

1. Bespoke Jan'21 request by Richard Schodde from MinEx Consulting for Kincora Copper.

# Kincora's strategic and district scale portfolio

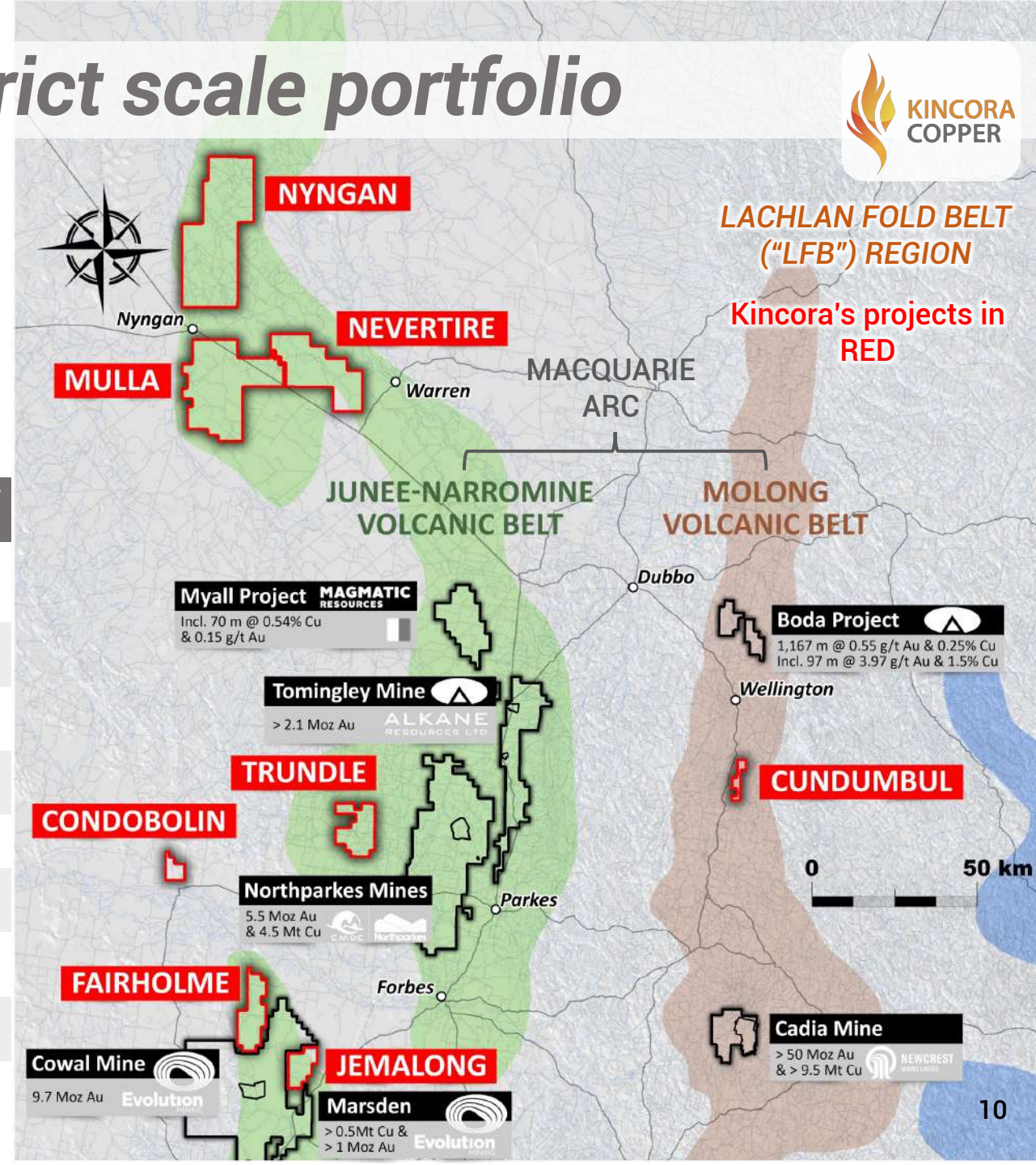


## Kincora's priority drilling projects:

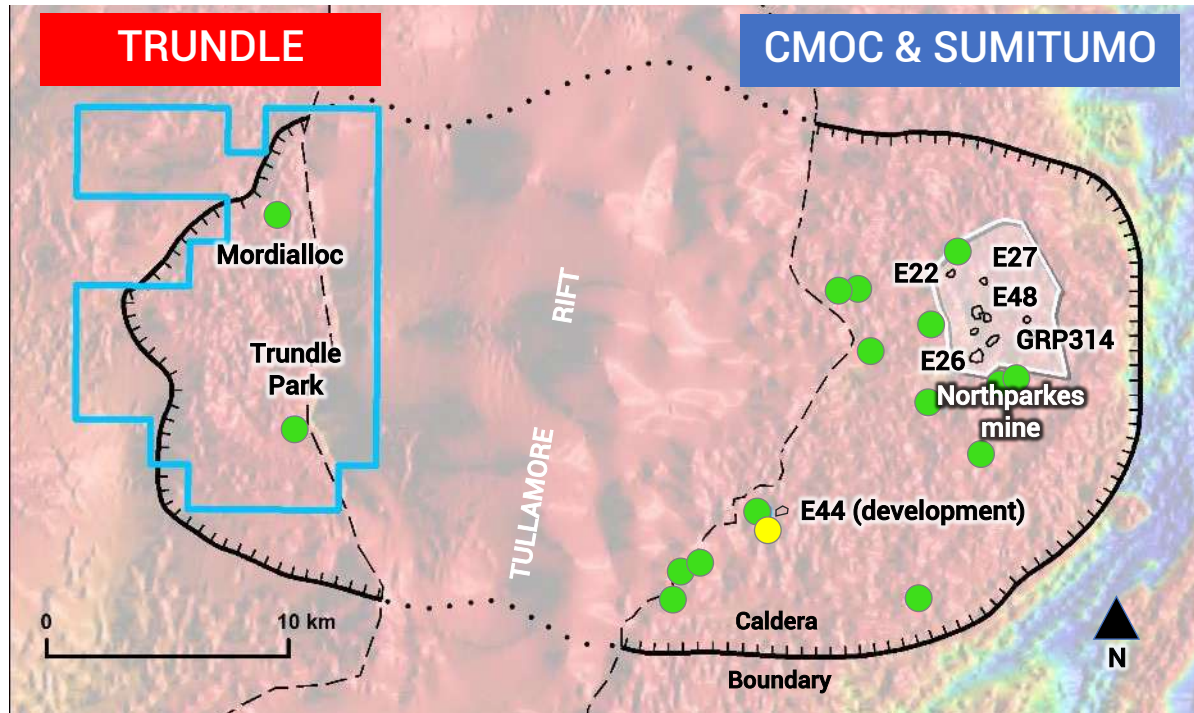
- Sit in favorable locations of the key porphyry belts of the Macquarie Arc
- Are advanced stages of exploration and/or host large scale footprints
- Demonstrate potential hallmarks of neighboring world-class deposits

Project	Macquarie Arc	Proximity to world-class mine	Near term drilling	Level of prior drilling	Evidence of Cu & Au	Last partner / owner
Trundle *	✓✓✓	Same system as Northparkes	✓ on-going	✓✓✓	✓✓✓	High Powered Exploration
Fairholme *	✓✓✓	<15km to Cowal	✓ on-going	✓✓✓	✓✓	Kaizen Discovery
Nyngan	✓		✓ first hole	✓	✓	Newcrest
Nevertire	✓				✓	St Barbara
Mulla	✓				✓	Burdekin
Cundumbul *	✓✓		✓ adjacent license	✓	✓	Mitsubishi Materials
Condobolin *				✓✓	✓✓	Ramelius Resources
Jemalong *	✓✓✓	<10km to Cowal & Marsden		✓✓	✓	

\* Joint Venture with RareX Limited



# Advanced stage exploration next to world-class mines



Operator / project (above)

Kincora Trundle project

CMOC Northparkes mine

**Prospect and Deposits**

- Gold
- Gold-Copper
- Porphyry
- Orebody

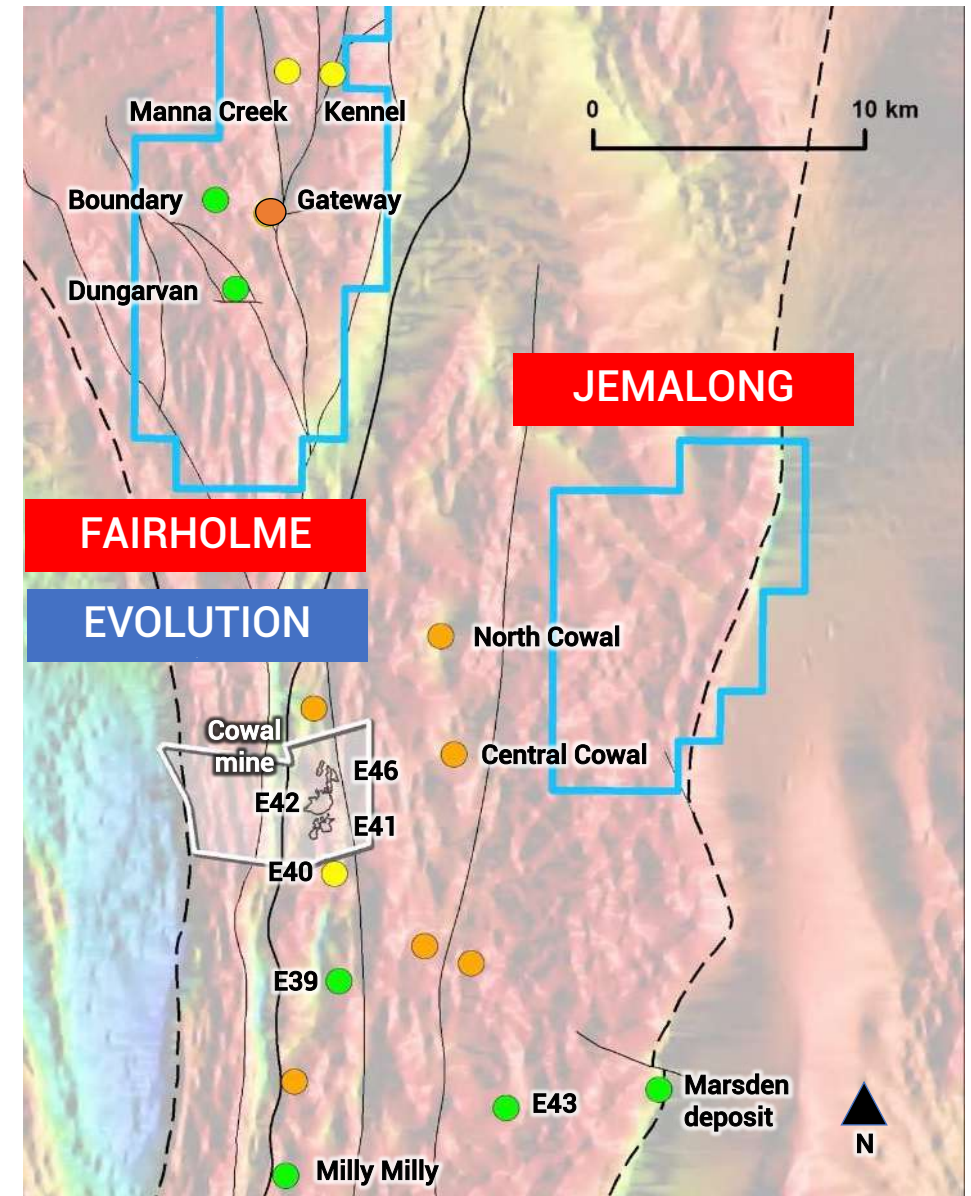
Operator / project (right)

Kincora Fairholme project (north)  
Jemalong project (east)

Evolution Mining Cowal mine

1. Sourced and adapted from public market disclosures and Evolution Sep'20 investor day
2. Bespoke Mar'20 request by MinEx Consulting for Kincora.. "Endowment" reported on a pre-mined resource basis.

Background magnetics (TMI RTP) from [minview.geoscience.nsw.gov.au](http://minview.geoscience.nsw.gov.au)



# Mongolia portfolio update



November 2021 soil sampling at West Fox prospect on the Tourmaline Hills exploration license in the Southern Gobi

# Mongolia's world class porphyry belt

On China's doorstep, trucking distance to the world's largest copper consumer

- >85Moz gold & ~50Mt copper endowment<sup>1</sup>



– Oyu Tolgoi gold-copper porphyries (>78Moz Au and >43Mt Cu<sup>1</sup>)



– Kharmagtai gold-copper porphyries (8Moz Au and 3Mt Cu<sup>2</sup>)



– Tsagaan Suvarga copper-molybdenum porphyries (~1.5Moz Cu and 60,000t Mo<sup>1,2</sup>)

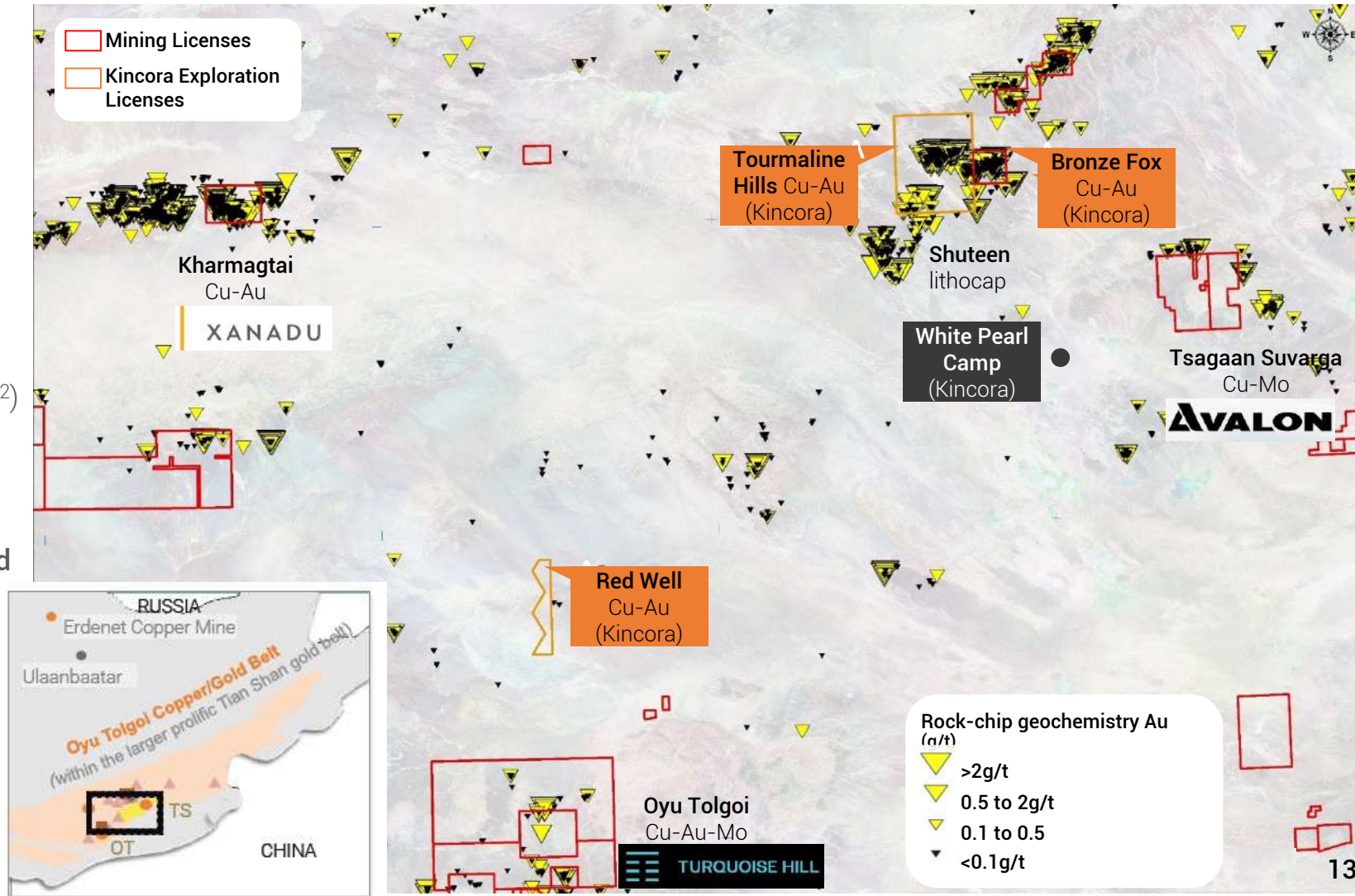


– Bronze Fox copper-gold porphyry (~1.2Mt Cu and ~0.9Moz Au<sup>1</sup>)

- Highly mineralised but vastly underexplored

- One of the world's fastest developing mining and infrastructure regions

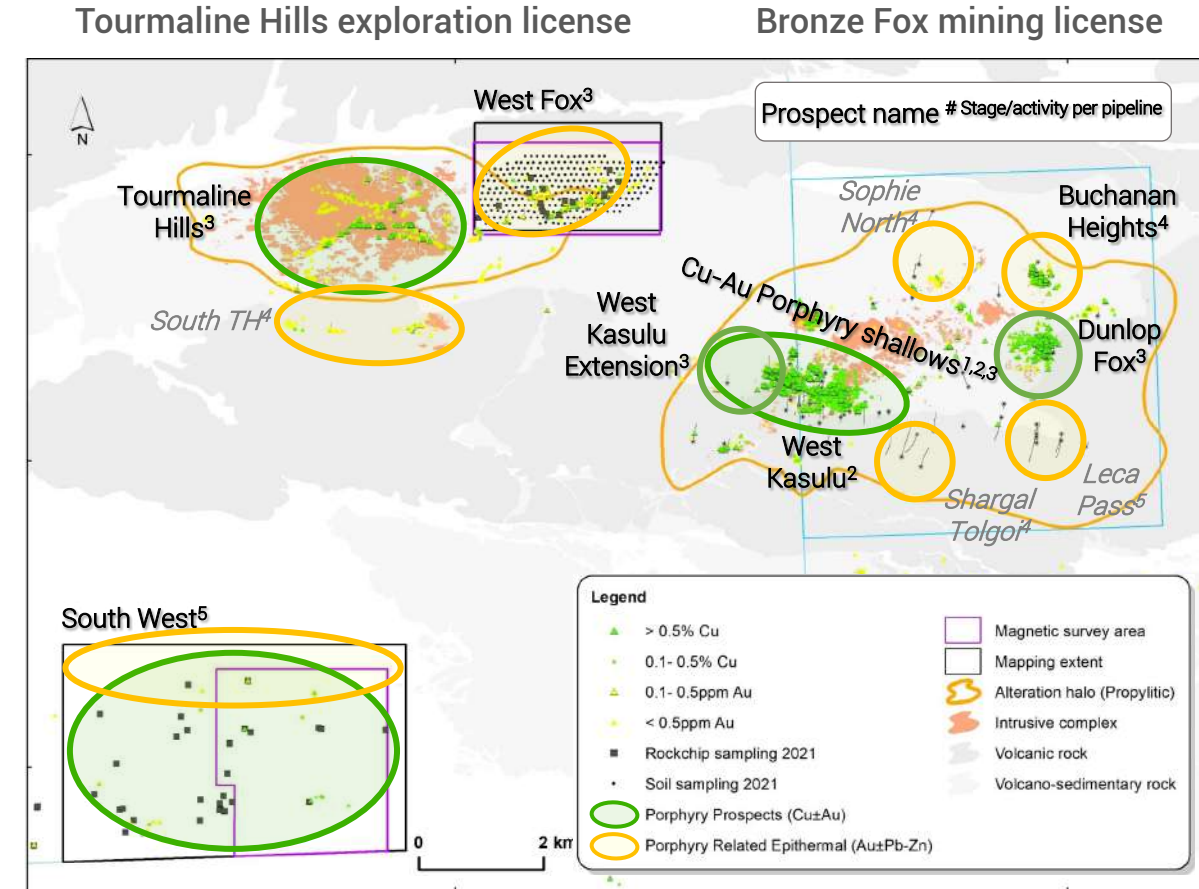
1. Bespoke 2019 request by Richard Schodde from MinEx Consulting for Kincora Copper providing Mongolia and Central Asian Orogenic Belt project level database.
2. Company data



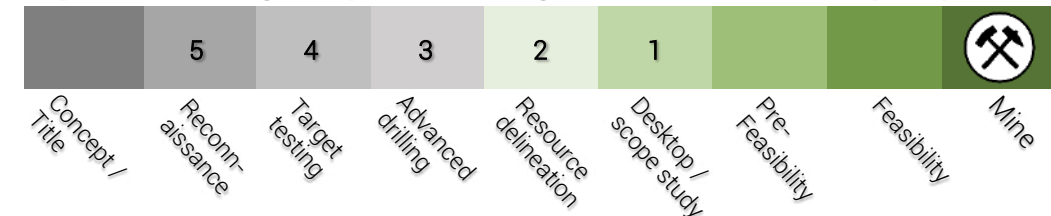
# Resilience Mining Mongolia transaction



- Field work recently concluded at Tourmaline Hills license at two prospects: **West Fox** (epithermal) & **South West** (porphyry & epithermal) targets, including mapping, soil/rock chip sampling & ground magnetics
- Definitive acquisition & JV agreement with Resilience Mining Mongolia ("RMM") for Kincora's Mongolian asset portfolio, retaining significant upside to exploration, project generation & development successes
- RMM has completed a prospectus/sup. prospectus's for an Initial Public Offering ("IPO") & admission to Australian Securities Exchange ("ASX")<sup>1</sup>, with a conditional satisfaction deadline for completion of January 31, 2022
- A key use of proposed funds for RMM (subject to successful IPO): **drilling walk up & shallow porphyry/epithermal targets** at the Bronze Fox mining license & Tourmaline Hills exploration license; conversion of exploration target to JORC resource; and, **drilling and desktop economic studies of at/near surface oxide material system** at Bronze Fox (on mining license).
- **Benefits to Kincora from RMM Agreement:**
  - retain a 20% free carry interest on existing project portfolio to certain material project delivery milestones
  - to own 9.9% of RMM upon successful listing/raising on the ASX
  - first right of refusal to gain 20% interest in new projects generated
- Completion of the Agreement is conditional on:
  - RMM having raised a minimum of A\$5 million in new equity alongside the IPO & having listed on the ASX by January 31, 2022



## Exploration Target Pipeline – Stage/activities of listed prospects



# Investment opportunity

Ambition to become the leading pure play porphyry explorer in Australia's foremost porphyry belt



## Team

*Industry leading technical team*



## Location

*Tier 1 jurisdiction and geological prospectivity*



## Targets

*Hallmarks to neighboring world-class mines/deposits*



## Catalysts

*Active systematic drilling at multiple targets/projects*

# ***Formal Business***

---



***1. Number of Directors - 5***

***2. Election of Directors***

***3. Re-appointment of Auditors***

***4. Amendment to the Articles***

***5. Share Capacity (ASX Listing Rule 7.1A)***

***6. Equity Incentive Plan***

***7. Ratification of Prior Options***

***8. Shares for Services Contract***

***Q&A***

***Other Business***






## Contact

Sam Spring  
President & CEO

[sam.spring@kincoracopper.com](mailto:sam.spring@kincoracopper.com)

Melbourne +61431 329 345

 [@KincoraCopper](https://twitter.com/KincoraCopper)

 [Kincora Copper Limited](https://www.linkedin.com/company/kincora-copper-limited)

[www.kincoracopper.com](http://www.kincoracopper.com)

[Check out our new website](http://www.kincoracopper.com)

[www.kincoracopper.com](http://www.kincoracopper.com)