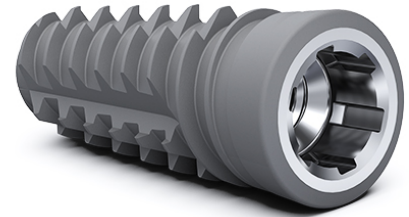


## Excellent primary stability with only 1 to 2 drills, equal or better than premium market leaders, all with the new Neoss ProActive® Edge implants.

Neoss ProActive® Edge is a one-of-a-kind implant - an empowering addition to the Neoss implant family giving you outstanding primary stability even in soft or compromised bone.



### What are the data saying?

Data from a recent EAO study shows that the Neoss ProActive® Edge implants achieve equal or better implant stability than the top premium brand implants. In addition, Neoss ProActive® Edge was the only implant that maintained outstanding implant stability in all situations, even with over-prepared osteotomies, making it highly predictable to use.<sup>1</sup>

### How

A revolutionary 1 to 2-step drilling protocol prepares the site with minimal bone removal giving you immediate feedback during placement. The drills are directly matched to the implant and thread designs, making placement faster, simpler and reducing chair time for you and your patients.

### What are key clinicians saying?

*“The things I really love with the Neoss ProActive® Edge Implant are the primary stability and you can use fewer drills. The primary stability makes it fantastic for my 4+ full arch cases too, it’s really my go-to implant for that.”*

Dr. John Hodges, USA

*“The Neoss Edge is a fabulous implant in soft bone or immediate sites. Precise placement with high primary stability.”*

Dr. Scott Davis, Australia

### Why

The predictability of the Neoss ProActive® Edge implant has been further confirmed in a clinical use study. High primary stability was achieved for all implants, allowing for immediate or early load in support of single crowns, partial bridges as well as for full arch restorations. All implants remained in function during the entire one-year observation period with minimal (-0.5 mm) bone remodeling.<sup>2</sup>

### And that’s not all!

Like all Neoss implants, Neoss ProActive® Edge features the clinically proven super hydrophilic ProActive® surface and the highly trusted NeoLoc® connection.

One prosthetic platform across 3 implant ranges with one screwdriver connection! That is Intelligent Simplicity!

**To find out more about the Neoss ProActive® Edge implant visit [www.neoss.com/edge](http://www.neoss.com/edge) or email [info@neoss.com](mailto:info@neoss.com)**

### References:

1. Turra M, Petersson A, and Sennerby L. Primary stability of three different aggressively threaded and tapered implants in low-density polyurethane. COIR. 2020; 31(S20): 60
2. Turra M, Andersson P, Verrocchi D, Sennerby L. A retrospective case series report on a novel aggressively threaded and tapered implant. COIR. 2020; 31(S20): 257