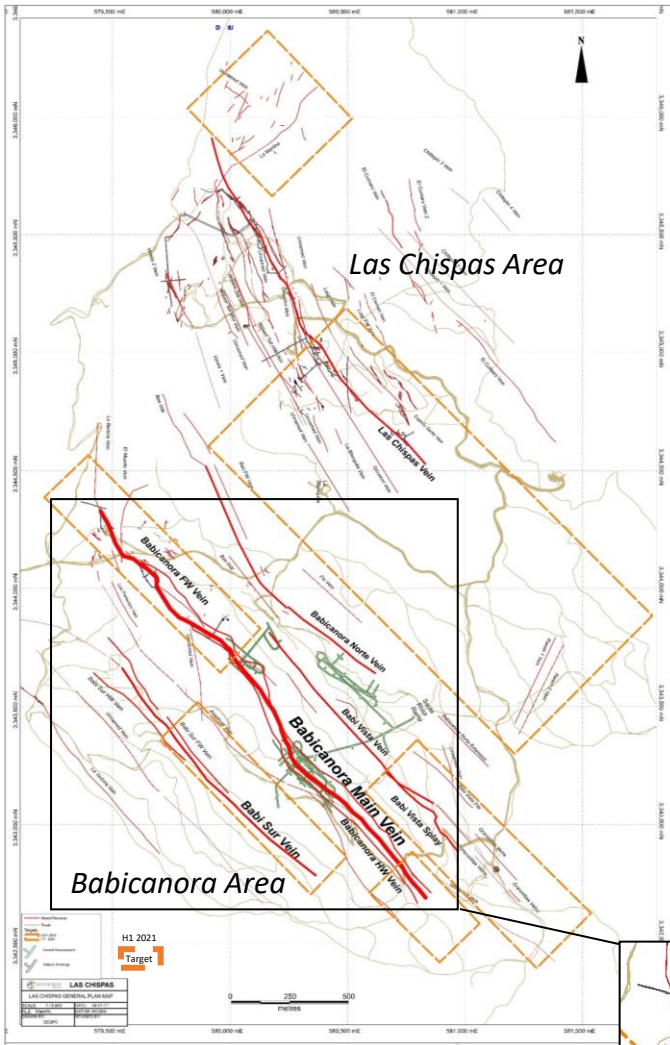
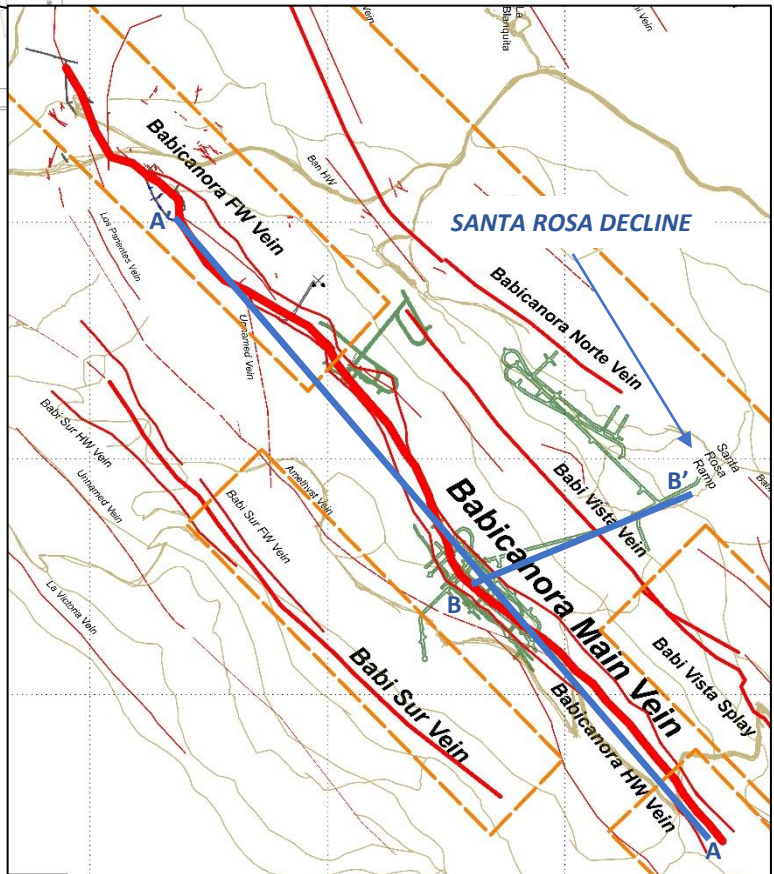


# Las Chispas District Plan Map



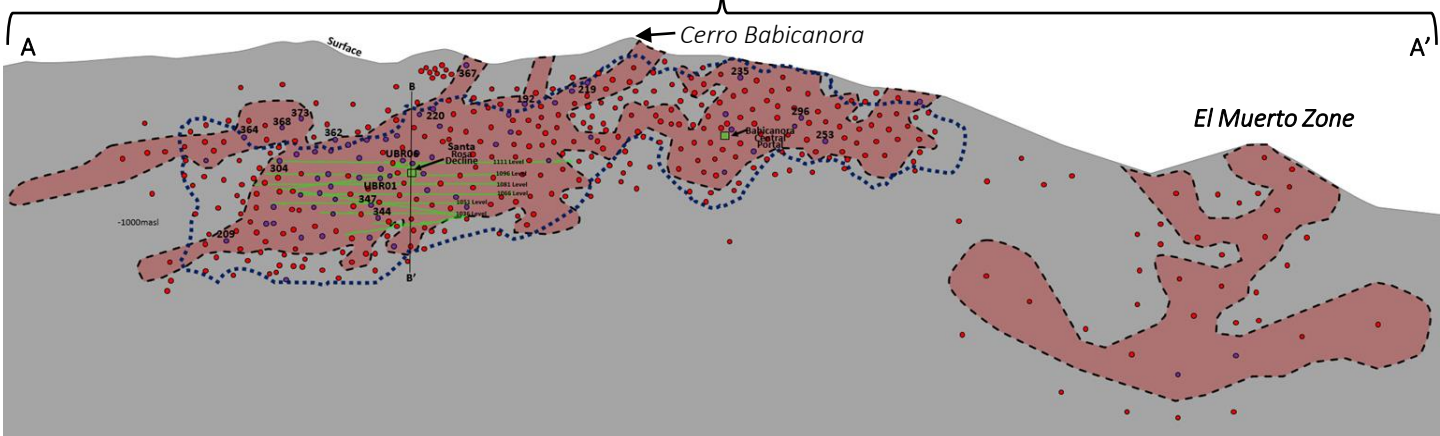
## Babicanora Area



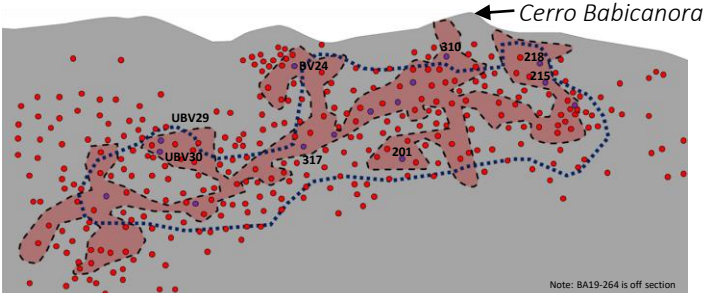
# Long Sections (Inclined, To Scale) of Babicanora Area Veins Looking Southwest

~2,100m

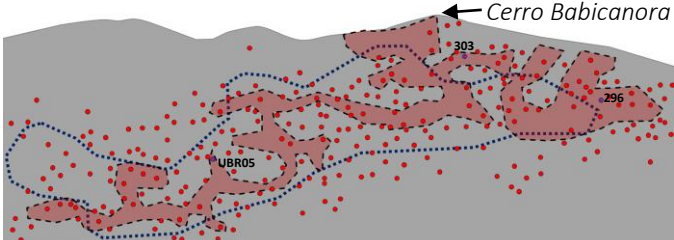
Babicanora "Main" Vein



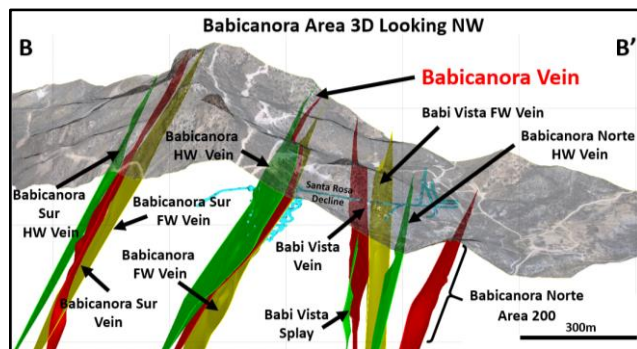
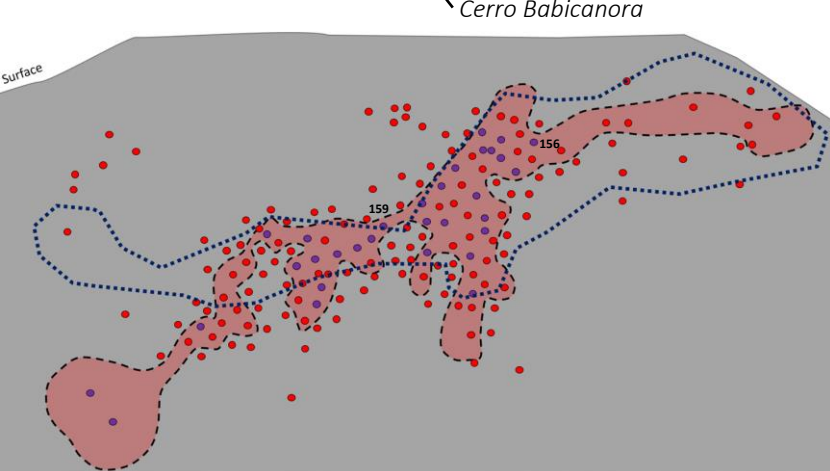
Babicanora FW Vein



Babicanora HW Vein



Babicanora Sur Vein



## Legend (Jan 2021)

- Completed DH Pierce pt.
- >1000 gpt AgEq, NR & Total
- New Underground Workings
- FS High-Grade Footprint (>150gpt AgEq\*)
- PEA Resource Model Footprint



0m 200m 400m



**BA19-304: 2.4m @ 38.06 gpt Au and 4,213.8 gpt Ag, or 7,068 gpt AgEq\***

\*AgEq based on 75 (Ag):1 (Au) calculated using long-term silver and gold prices of US\$17.00 per ounce silver and US\$1,225 per ounce gold, with average metallurgical recoveries of 90% silver and 95% gold. Note: NR = this news release