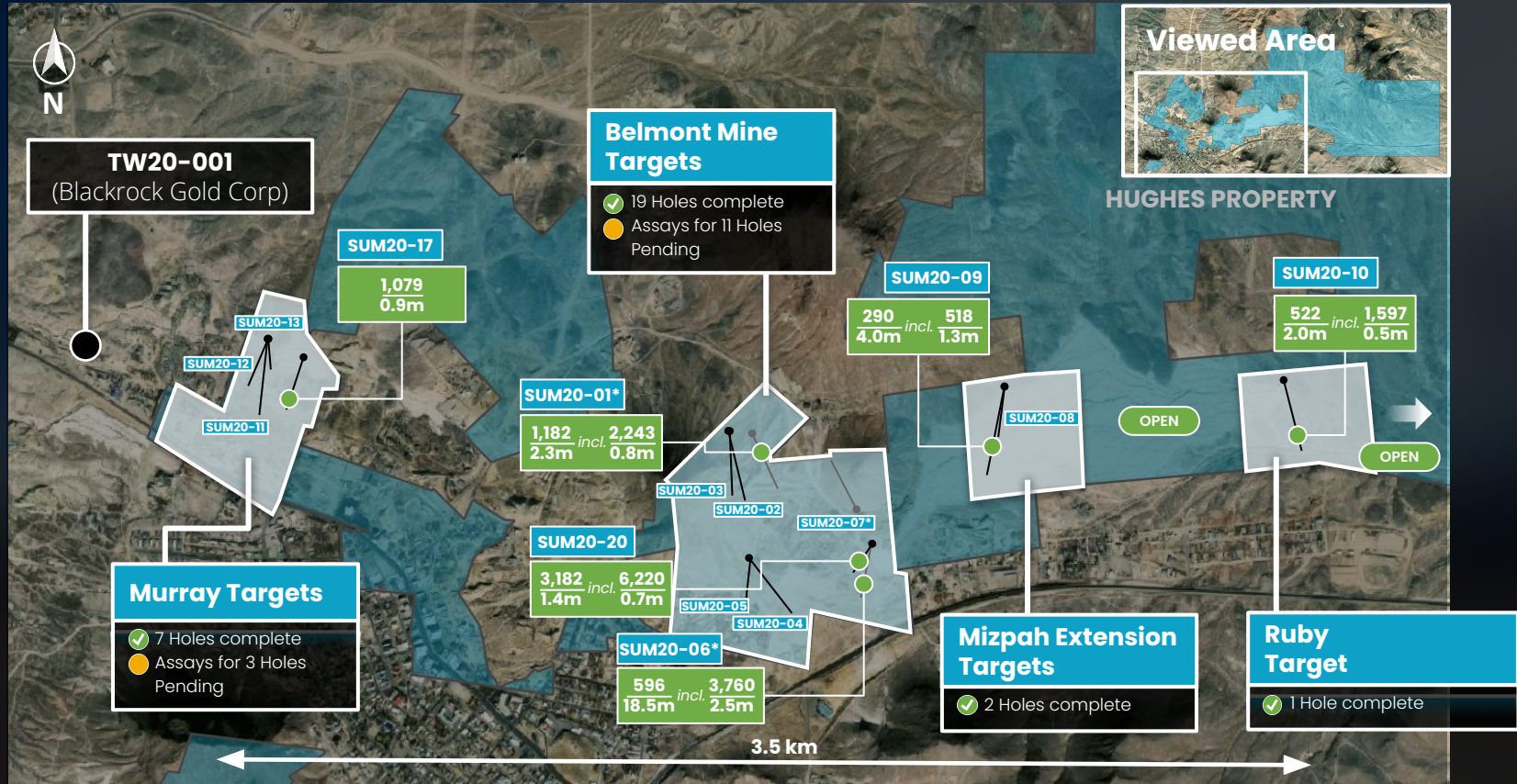


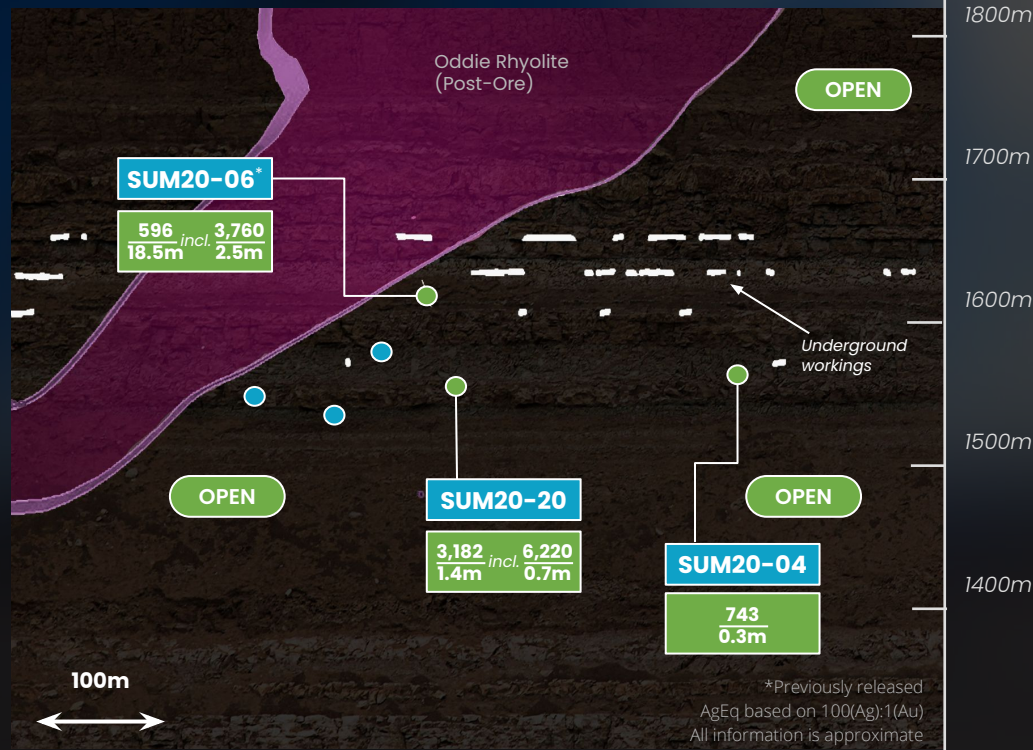
*Previously released
 AgEq based on 100(Ag):1(Au)
 All information is approximate

Hughes Property Drilling



Longsection of the Rescue #2 Vein

Rescue #2 Vein



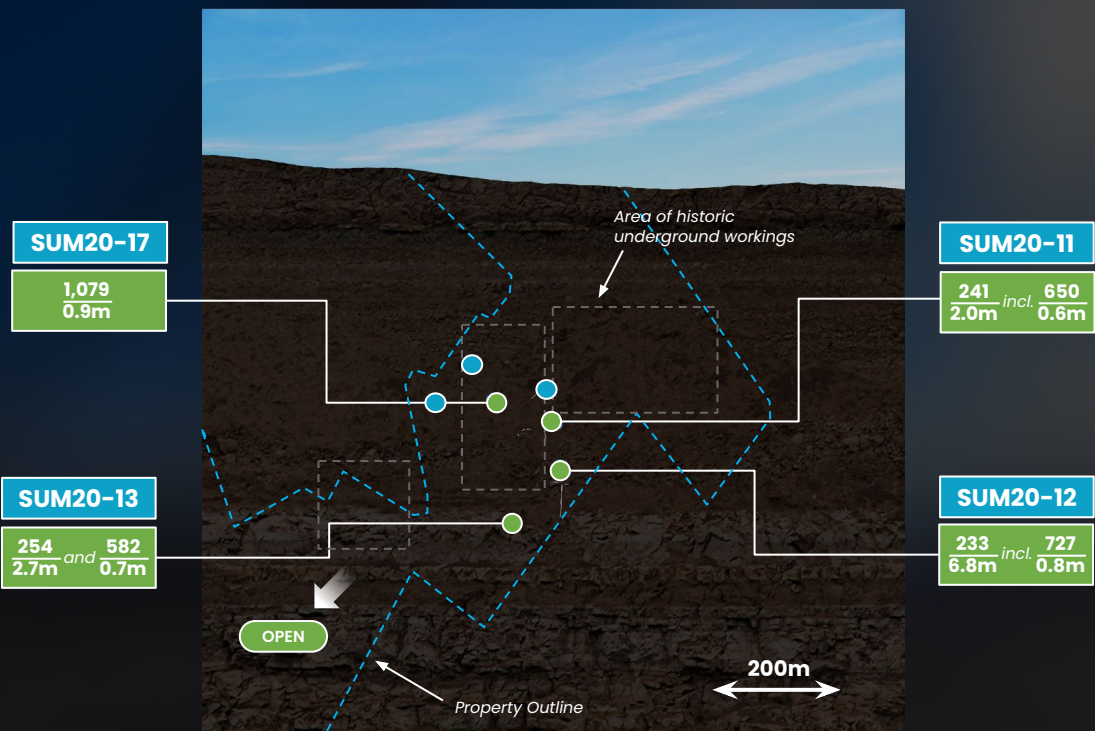
LEGEND

- SUM20-XX** ● Drill Hole Pierce Point
- 3,182** ● g/t AgEq*
- 1.4m** ● Intercept Length
- Assays Pending



SUM20-20 @ 397.4m
6,220 g/t AgEq over 0.7 m

Longsection of the Murray Vein



LEGEND

- SUM20-XX** ● Drill Hole Pierce Point
- 3,182** ● g/t AgEq*
- 1.4m** ● Intercept Length
- Assays Pending



SUM20-17 @ 302.8m
1,079 g/t AgEq over 0.9m

Inclined longitudinal section of the moderately NW-dipping Tonopah fault, host to the Murray vein. Looking SE - unsliced

AgEq based on 100(Ag):1(Au)
All information is approximate